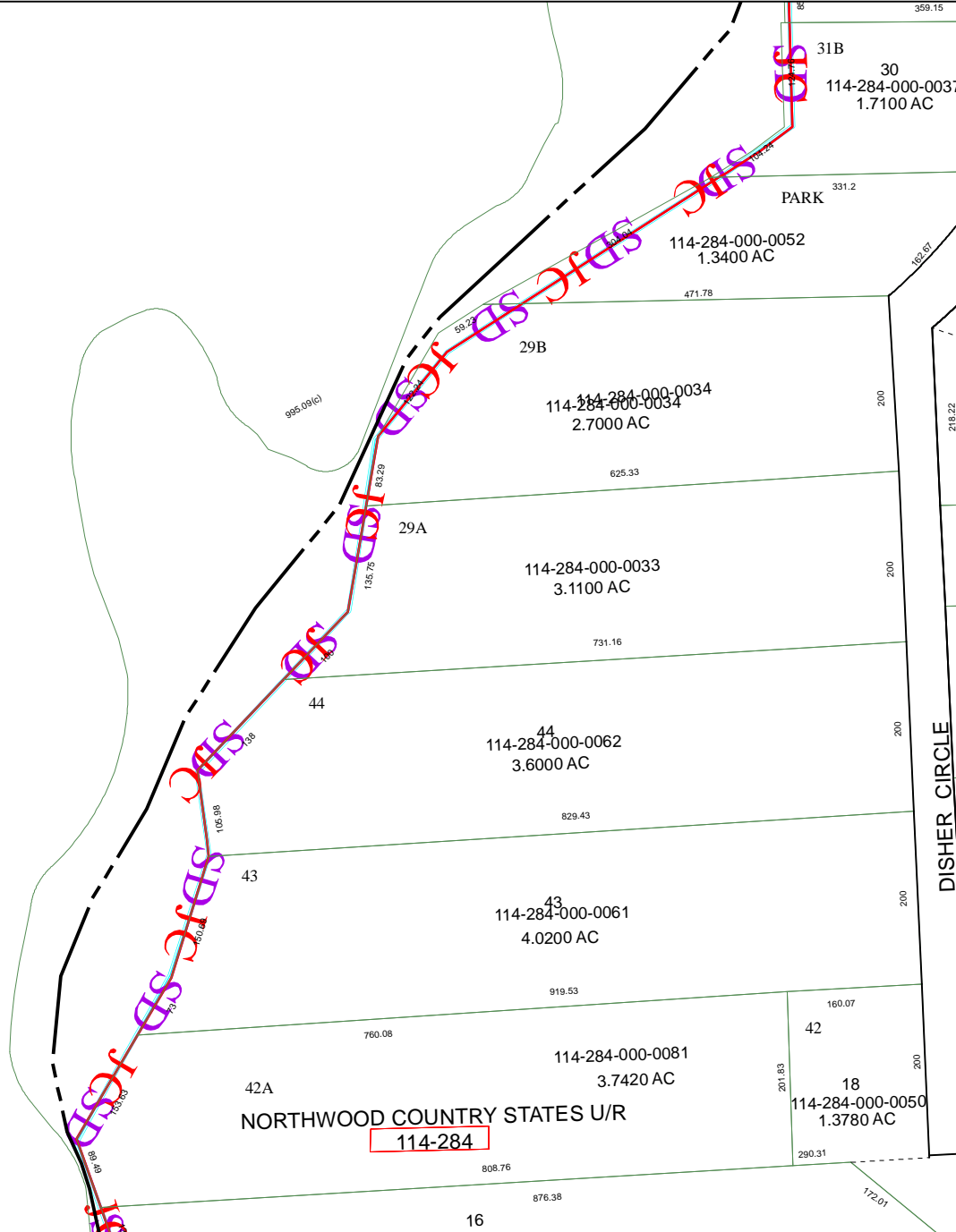


5973A12

5973C3

1870.23(c)



5973C8

# Harris County Appraisal District



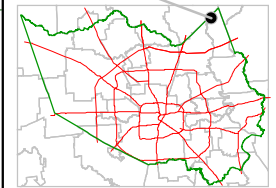
0 100 200

PUBLICATION DATE:  
8/15/2011

Geospatial or map data maintained by the Harris County Appraisal District is for informational purposes and may **not** have been prepared for or be suitable for legal, engineering, or surveying purposes. It does **not** represent an on-the-ground survey and only represents the approximate location of property boundaries.



## MAP LOCATION



# FACET 5973C

1	2	3	4
5	6	7	8
9	10	11	12

DISHER CIRCLE

5973D1

359.15

31B

30

114-284-000-0037  
1.7100 AC

PARK

114-284-000-0052  
1.3400 AC

29B

114-284-000-0034  
2.7000 AC

29A

114-284-000-0033  
3.1100 AC

44

114-284-000-0062  
3.6000 AC

43

114-284-000-0061  
4.0200 AC

42A

114-284-000-0081  
3.7420 AC

NORTHWOOD COUNTRY STATES U/R

114-284

160.07

42

114-284-000-0050  
1.3780 AC

172.01

16

876.38

808.76

760.08

919.53

829.43

114-284-000-0062  
3.6000 AC

731.16

114-284-000-0033  
3.1100 AC

625.33

114-284-000-0034  
2.7000 AC

471.78

114-284-000-0052  
1.3400 AC

331.2

359.15

31B

30

114-284-000-0037  
1.7100 AC

PARK

114-284-000-0052  
1.3400 AC

29B

114-284-000-0034  
2.7000 AC

29A

114-284-000-0033  
3.1100 AC

44

114-284-000-0062  
3.6000 AC

43

114-284-000-0061  
4.0200 AC

42A

114-284-000-0081  
3.7420 AC

NORTHWOOD COUNTRY STATES U/R

114-284

160.07

42

114-284-000-0050  
1.3780 AC

172.01

16

876.38

808.76

760.08

919.53

829.43

114-284-000-0062  
3.6000 AC

731.16

114-284-000-0033  
3.1100 AC

625.33

114-284-000-0034  
2.7000 AC

471.78

114-284-000-0052  
1.3400 AC

331.2

359.15

31B

30

114-284-000-0037  
1.7100 AC

PARK

114-284-000-0052  
1.3400 AC

29B

114-284-000-0034  
2.7000 AC

29A

114-284-000-0033  
3.1100 AC

44

114-284-000-0062  
3.6000 AC

43

114-284-000-0061  
4.0200 AC

42A

114-284-000-0081  
3.7420 AC

NORTHWOOD COUNTRY STATES U/R

114-284

160.07

42

114-284-000-0050  
1.3780 AC

172.01

16

876.38

808.76

760.08

919.53

829.43

114-284-000-0062  
3.6000 AC

731.16

114-284-000-0033  
3.1100 AC

625.33

114-284-000-0034  
2.7000 AC

471.78

114-284-000-0052  
1.3400 AC

331.2

359.15

31B

30

114-284-000-0037  
1.7100 AC

PARK

114-284-000-0052  
1.3400 AC

29B

114-284-000-0034  
2.7000 AC

29A

114-284-000-0033  
3.1100 AC

44

114-284-000-0062  
3.6000 AC

43

114-284-000-0061  
4.0200 AC

42A

114-284-000-0081  
3.7420 AC

NORTHWOOD COUNTRY STATES U/R

114-284

160.07

42

114-284-000-0050  
1.3780 AC

172.01

16

876.38

808.76

760.08

919.53

829.43

114-284-000-0062  
3.6000 AC

731.16

114-284-000-0033  
3.1100 AC

625.33

114-284-000-0034  
2.7000 AC

471.78

114-284-000-0052  
1.3400 AC

331.2

359.15

31B

30

114-284-000-0037  
1.7100 AC

PARK

114-284-000-0052  
1.3400 AC

29B

114-284-000-0034  
2.7000 AC

29A

114-284-000-0033  
3.1100 AC

44

114-284-000-0062  
3.6000 AC

43

114-284-000-0061  
4.0200 AC

42A

114-284-000-0081  
3.7420 AC

NORTHWOOD COUNTRY STATES U/R

114-284

160.07

42

114-284-000-0050  
1.3780 AC

172.01

16

876.38

808.76

760.08

919.53

829.43

114-284-000-0062  
3.6000 AC

731.16

114-284-000-0033  
3.1100 AC

625.33

114-284-000-0034  
2.7000 AC

471.78

114-284-000-0052  
1.3400 AC

331.2

359.15

31B

30

114-284-000-0037  
1.7100 AC

PARK

114-284-000-0052  
1.3400 AC

29B

114-284-000-0034  
2.7000 AC

29A

114-284-000-0033  
3.1100 AC

44

114-284-000-0062  
3.6000 AC

43

114-284-000-0061  
4.0200 AC

42A

114-284-000-0081  
3.7420 AC

NORTHWOOD COUNTRY STATES U/R

114-284

160.07

42

114-284-000-0050  
1.3780 AC

172.01

16

876.38

808.76

760.08

919.53

829.43

114-284-000-0062  
3.6000 AC

731.16

114-284-000-0033  
3.1100 AC

625.33

114-284-000-0034  
2.7000 AC

471.78

114-284-000-0052  
1.3400 AC

331.2

359.15

31B

30

114-284-000-0037  
1.7100 AC

PARK

114-284-000-0052  
1.3400 AC

29B

114-284-000-0034  
2.7000 AC

29A

114-284-000-0033  
3.1100 AC

44

114-284-000-0062  
3.6000 AC

43

114-284-000-0061  
4.0200 AC

42A

114-284-000-0081  
3.7420 AC

NORTHWOOD COUNTRY STATES U/R

114-284

160.07

42

114-284-000-0050  
1.3780 AC

172.01

16

876.38

808.76