

5971D4

EVELAND ROAD (FM 2400)

FM 2100 BUSINESS PARK  
130-129

# Harris County Appraisal District



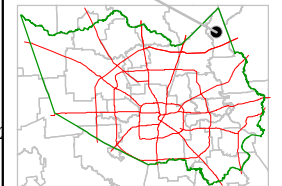
0 100 200

PUBLICATION DATE:  
8/15/2011

Geospatial or map data maintained by the Harris County Appraisal District is for informational purposes and may not have been prepared for or be suitable for legal, engineering, or surveying purposes. It does not represent an on-the-ground survey and only represents the approximate location of property boundaries.



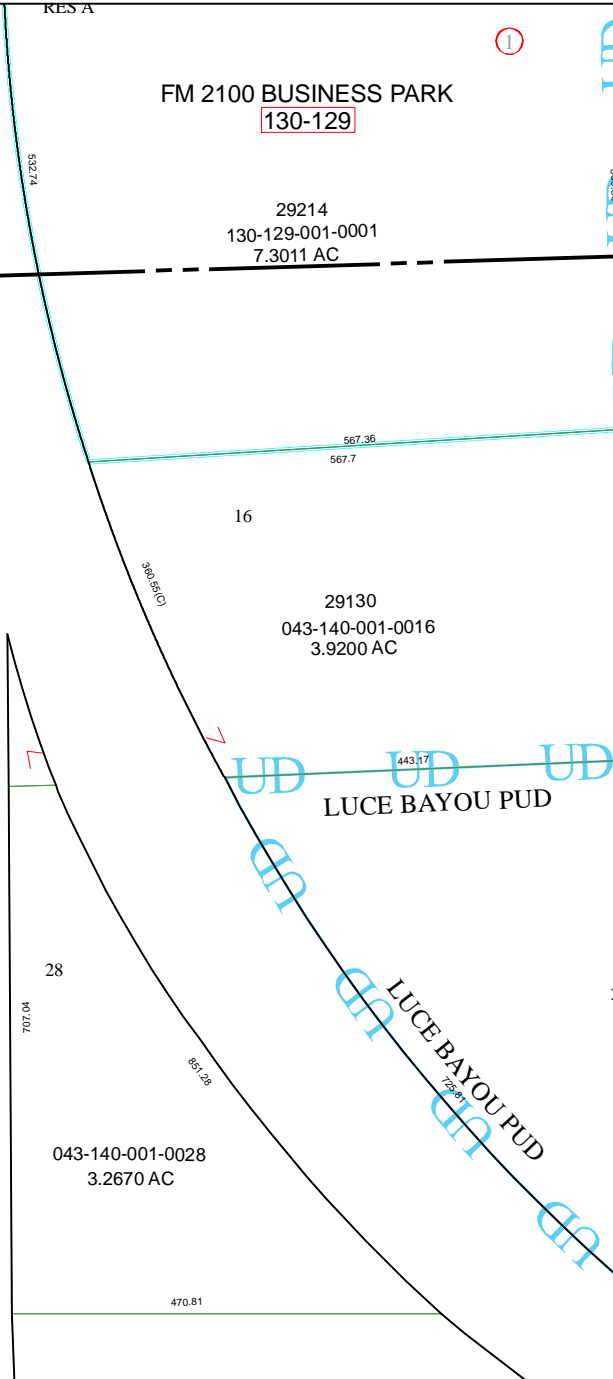
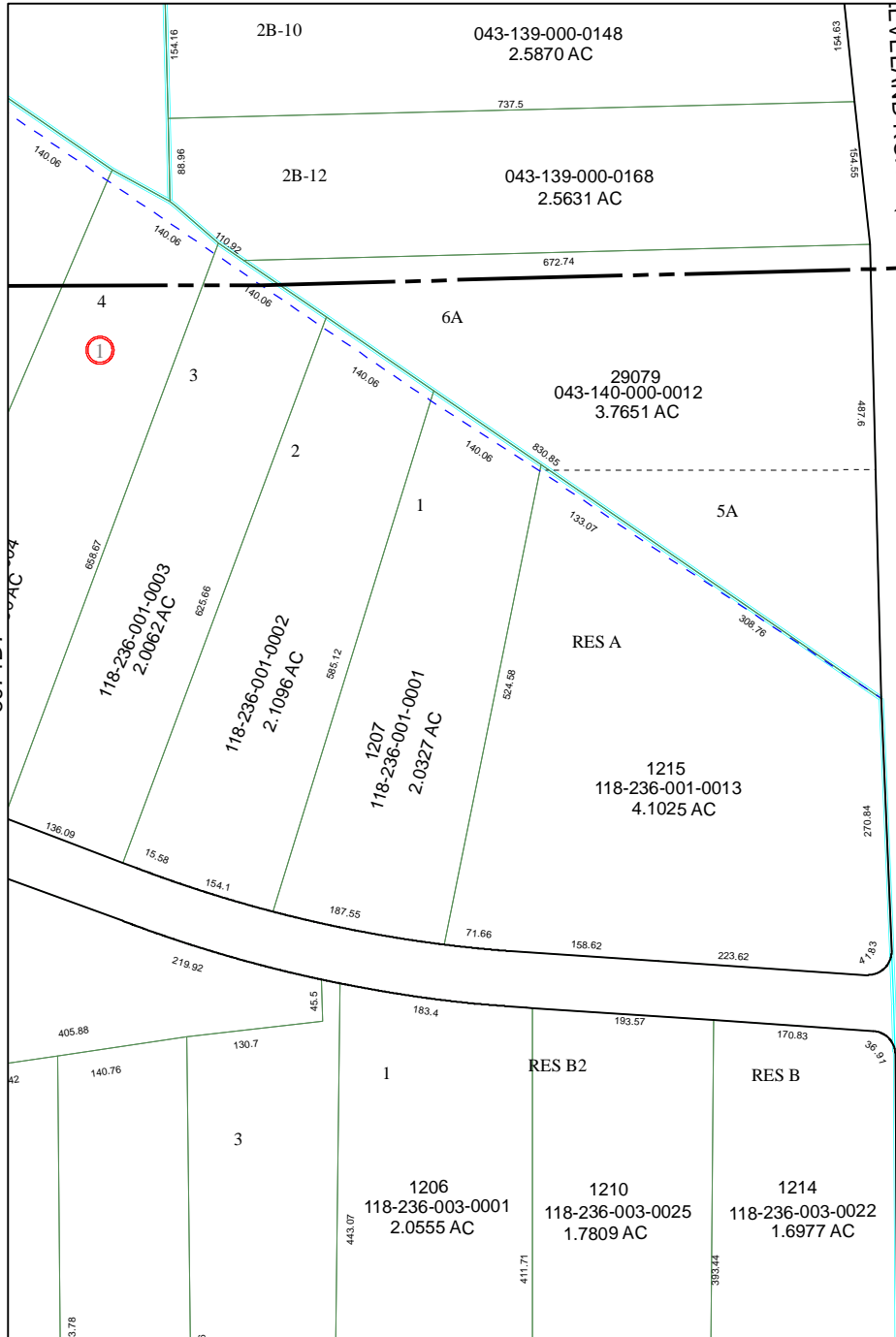
MAP LOCATION



## FACET 5971D

1	2	3	4
5	6	7	8
9	10	11	12

5971D12



5971D7

6071C5