

Harris County Appraisal District

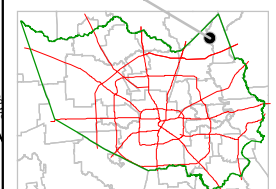


0 100 200
PUBLICATION DATE:
 7/1/2011

Geospatial or map data maintained by the Harris County Appraisal District is for informational purposes and may **not** have been prepared for or be suitable for legal, engineering, or surveying purposes. It does **not** represent an on-the-ground survey and only represents the approximate location of property boundaries.

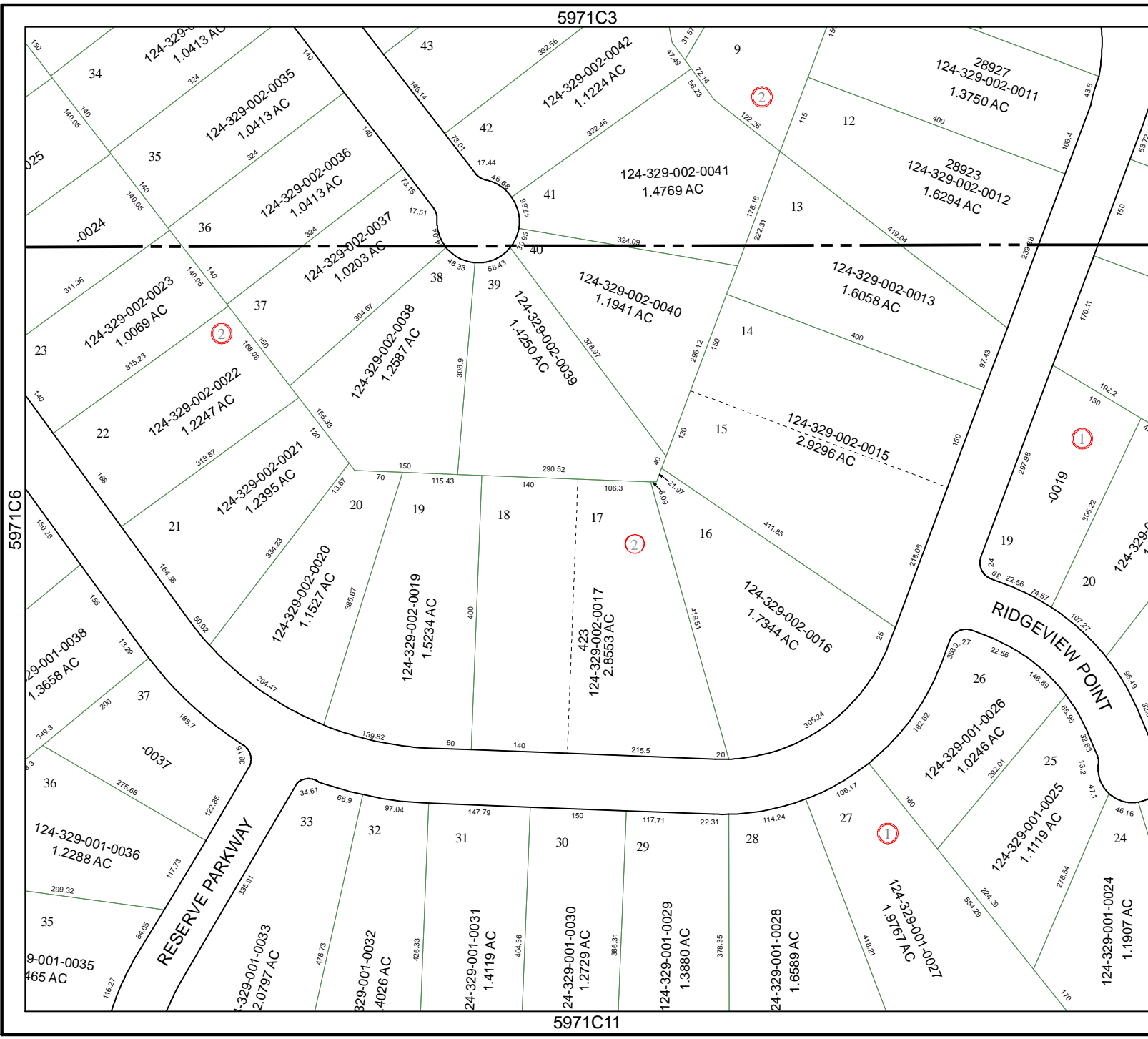


MAP LOCATION



FACET 5971C

1	2	3	4
5	6	7	8
9	10	11	12



5971C3

5971C11

5971C6

5971C8

RESERVE PARKWAY

RIDGEVIEW POINT