

5970C2

1W

1R

RES A

KINGS POINT VILLAGE & 3RD PAR R/P
117-737
SEC 10

COUNTRY FALLS LANE

RUSTIC CREEK LANE
KINGS POINT VILG 2ND R/P
117-737
SEC 10

5970C10

Harris County Appraisal District

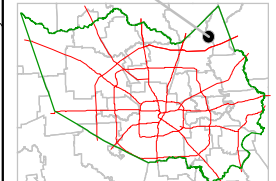


0 100 200
PUBLICATION DATE:
6/1/2011

Geospatial or map data maintained by the Harris County Appraisal District is for informational purposes and may not have been prepared for or be suitable for legal, engineering, or surveying purposes. It does not represent an on-the-ground survey and only represents the approximate location of property boundaries.

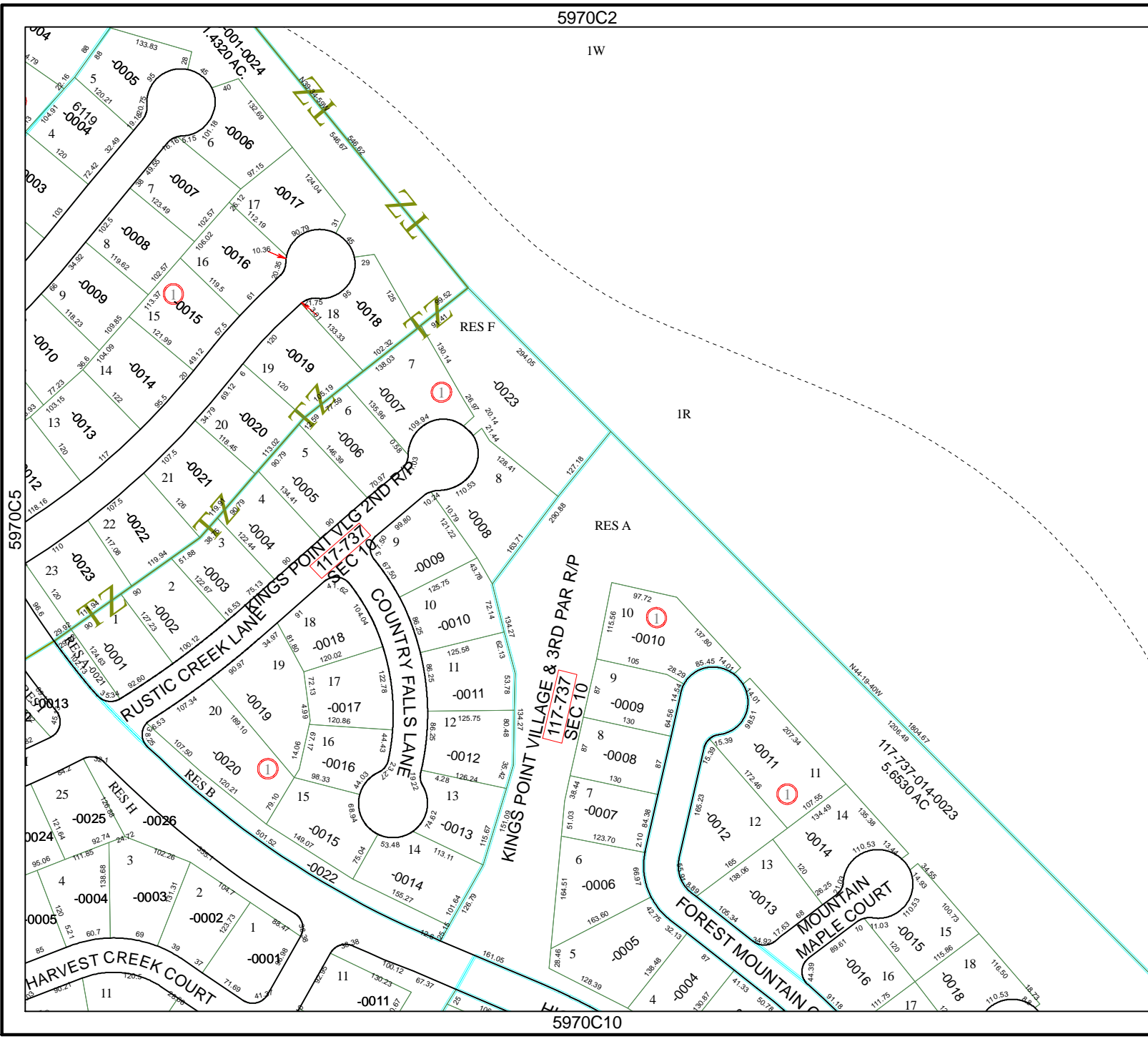


MAP LOCATION



FACET 5970C

1	2	3	4
5	6	7	8
9	10	11	12



5970C5

5970C7