

5970C8

1W

5970C11

Harris County Appraisal District

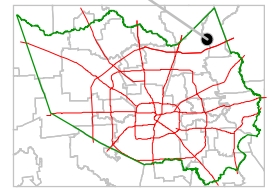


0 100 200
PUBLICATION DATE:
6/9/2011

Geospatial or map data maintained by the Harris County Appraisal District is for informational purposes and may not have been prepared for or be suitable for legal, engineering, or surveying purposes. It does not represent an on-the-ground survey and only represents the approximate location of property boundaries.



MAP LOCATION

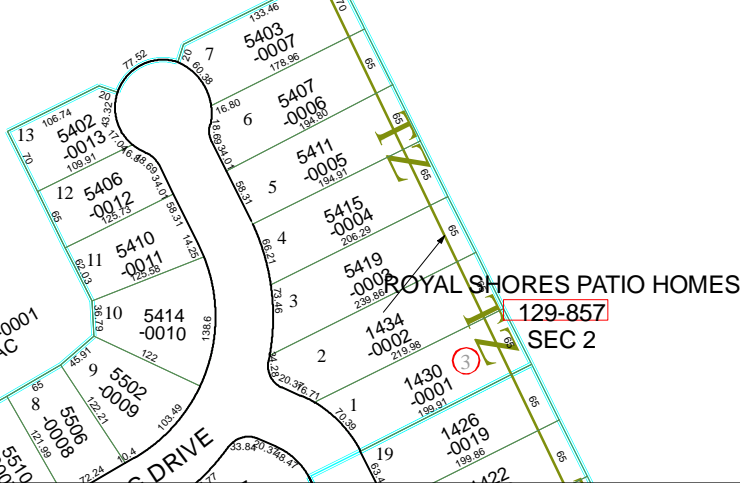


FACET 5970C

| | | | |
|---|----|----|----|
| 1 | 2 | 3 | 4 |
| 5 | 6 | 7 | 8 |
| 9 | 10 | 11 | 12 |

RESERVES AT ROYAL SHORES
130-206

RES A
130-206-001-0001
3.9300 AC



5969A4

5970D9