

Harris County Appraisal District

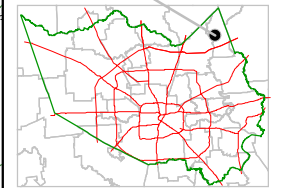


0 100 200
PUBLICATION DATE:
 8/15/2011

Geospatial or map data maintained by the Harris County Appraisal District is for informational purposes and may not have been prepared for or be suitable for legal, engineering, or surveying purposes. It does not represent an on-the-ground survey and only represents the approximate location of property boundaries.

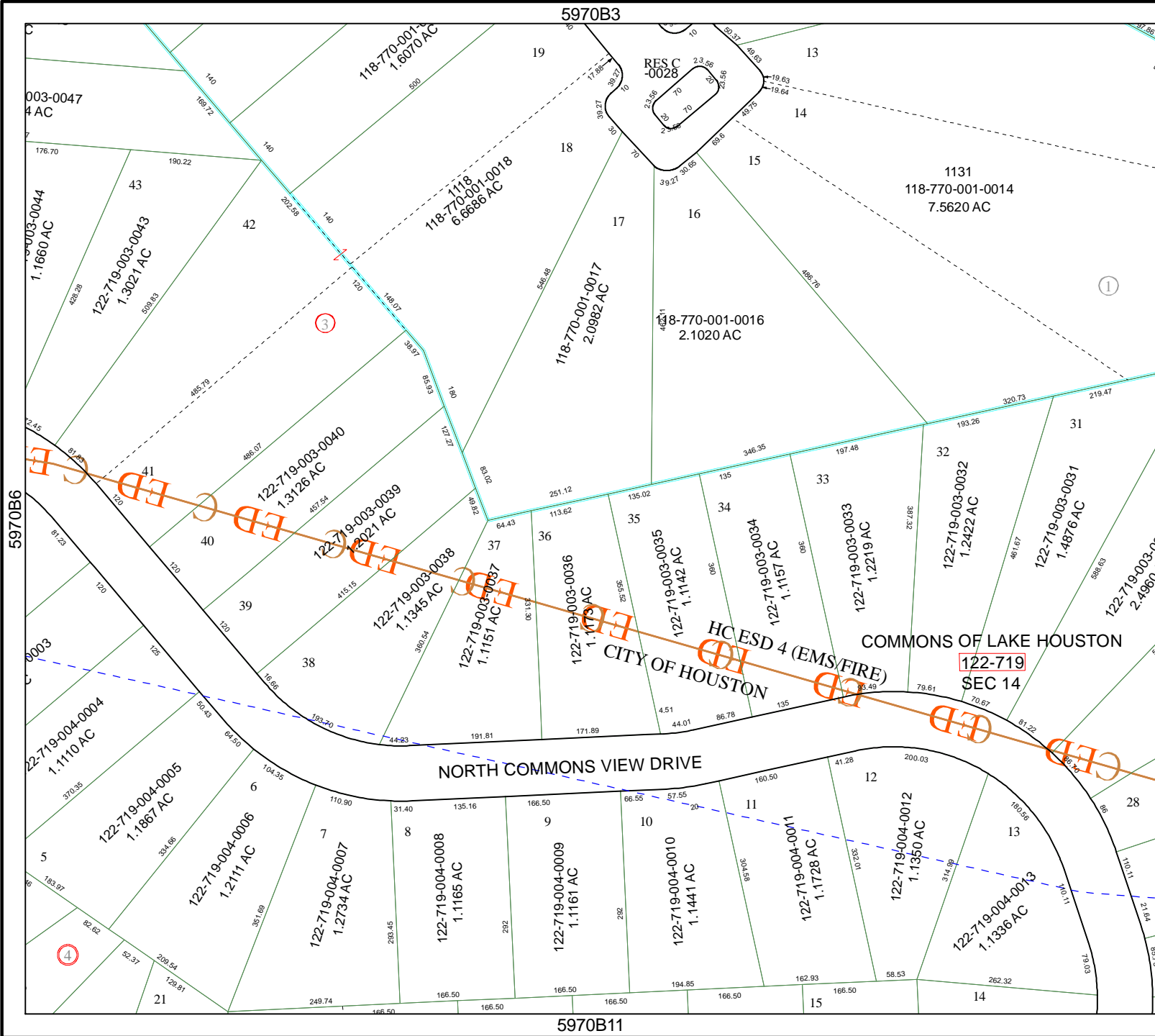


MAP LOCATION



FACET 5970B

1	2	3	4
5	6	7	8
9	10	11	12



5970B6

5970B3

5970B1

5970B8

5970B3

5970B1

5970B3

5970B1

003-0047
4 AC

003-0044
1.1660 AC

122-719-003-0043
1.3021 AC

118-770-001-16070 AC

118-770-001-0018
6.6686 AC

118-770-001-0017
2.0982 AC

RES C
-0028

118-770-001-0016
2.1020 AC

1131
118-770-001-0014
7.5620 AC

122-719-003-0040
1.3126 AC

122-719-003-0039
1.2021 AC

122-719-003-0038
1.1335 AC

122-719-003-0037
1.1151 AC

122-719-003-0036
1.1179 AC

122-719-003-0035
1.1142 AC

122-719-003-0034
1.1157 AC

122-719-003-0033
1.2219 AC

122-719-003-0032
1.2422 AC

122-719-003-0031
1.4876 AC

COMMONS OF LAKE HOUSTON

CITY OF HOUSTON

HCESD 4 (EMS/FIRE)

122-719
SEC 14

NORTH COMMONS VIEW DRIVE

122-719-004-0005
1.1867 AC

122-719-004-0006
1.2111 AC

122-719-004-0007
1.2734 AC

122-719-004-0008
1.1165 AC

122-719-004-0009
1.1161 AC

122-719-004-0010
1.1441 AC

122-719-004-0011
1.1728 AC

122-719-004-0012
1.1350 AC

122-719-004-0013
1.1336 AC