

Harris County Appraisal District

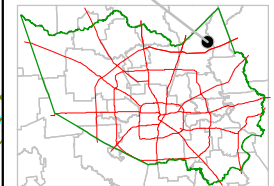


0 100 200
PUBLICATION DATE:
 5/26/2011

Geospatial or map data maintained by the Harris County Appraisal District is for informational purposes and may not have been prepared for or be suitable for legal, engineering, or surveying purposes. It does not represent an on-the-ground survey and only represents the approximate location of property boundaries.



MAP LOCATION

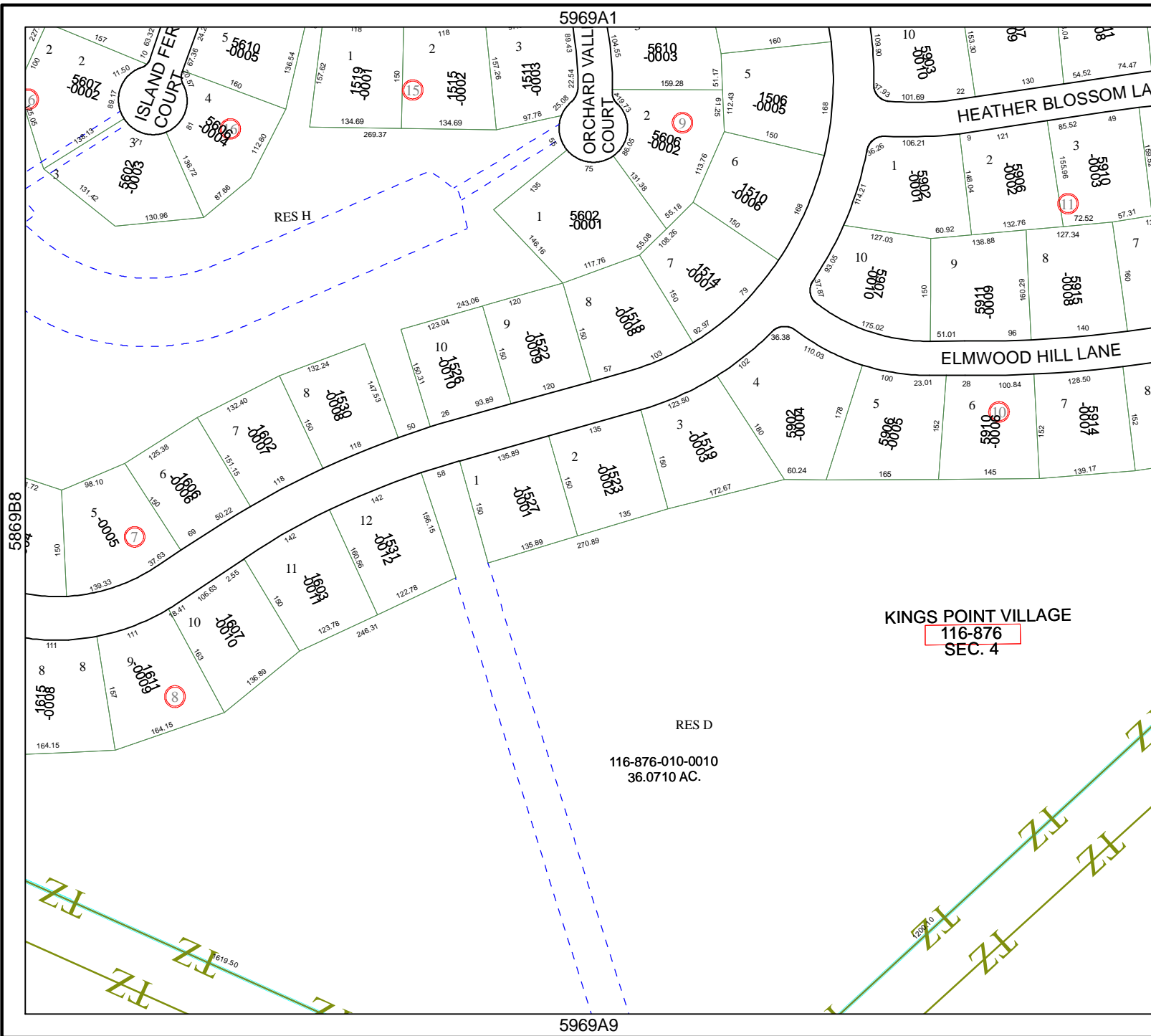


FACET 5969A

1	2	3	4
5	6	7	8
9	10	11	12

5969A1

5969A9



RES D

116-876-010-0010
 36.0710 AC.

KINGS POINT VILLAGE
 116-876
 SEC. 4

5869B8

5969A6