

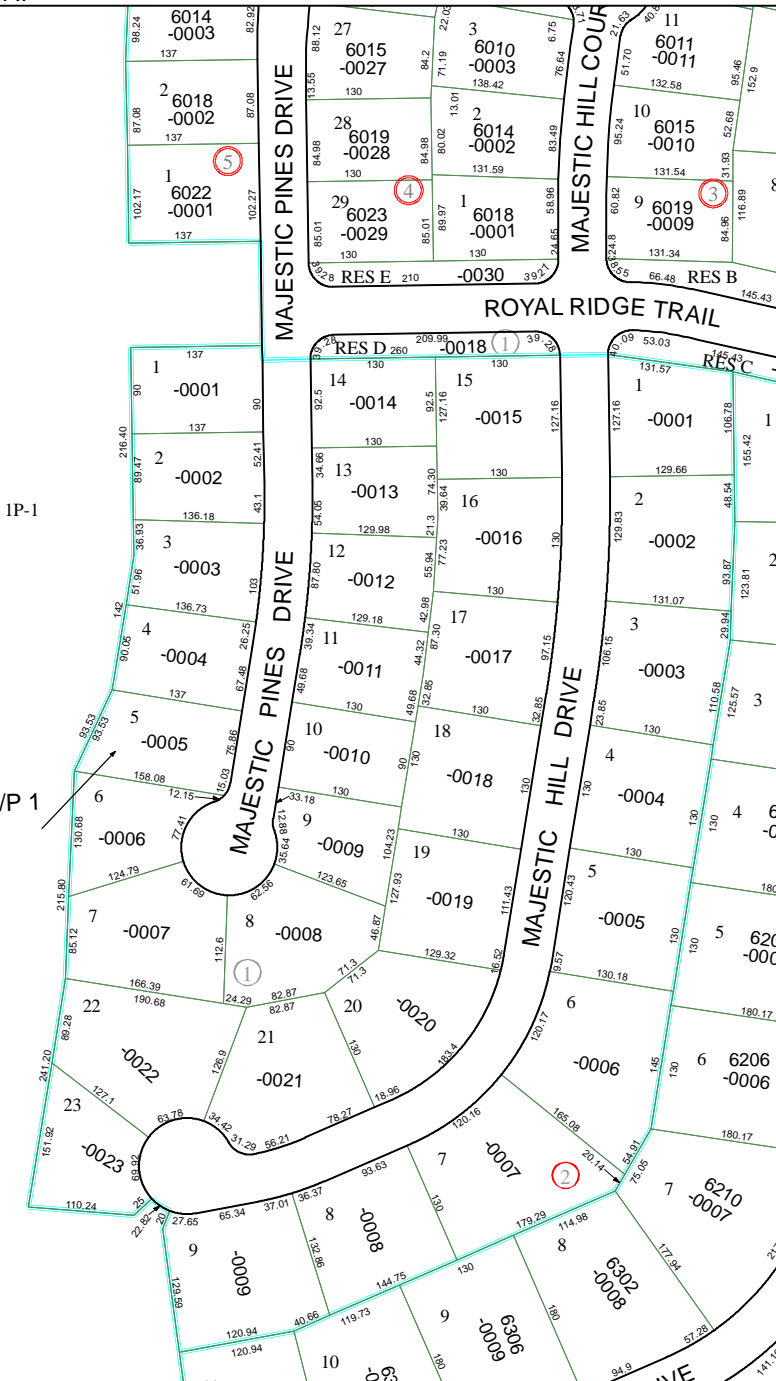
5969A7

IP-1

045-061-000-0040
67.0720 AC

IP-1

ROYAL SHORES R/P 1
129-974
SEC 5



5969C3

Harris County Appraisal District

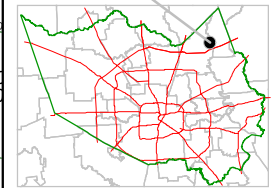


0 100 200

PUBLICATION DATE:
8/15/2011

Geospatial or map data maintained by the Harris County Appraisal District is for informational purposes and may **not** be prepared for or be suitable for legal, engineering, or surveying purposes. It does **not** represent an on-the-ground survey and only represents the approximate location of property boundaries.

MAP LOCATION



FACET 5969A

1	2	3	4
5	6	7	8
9	10	11	12

5969A10

IP-1