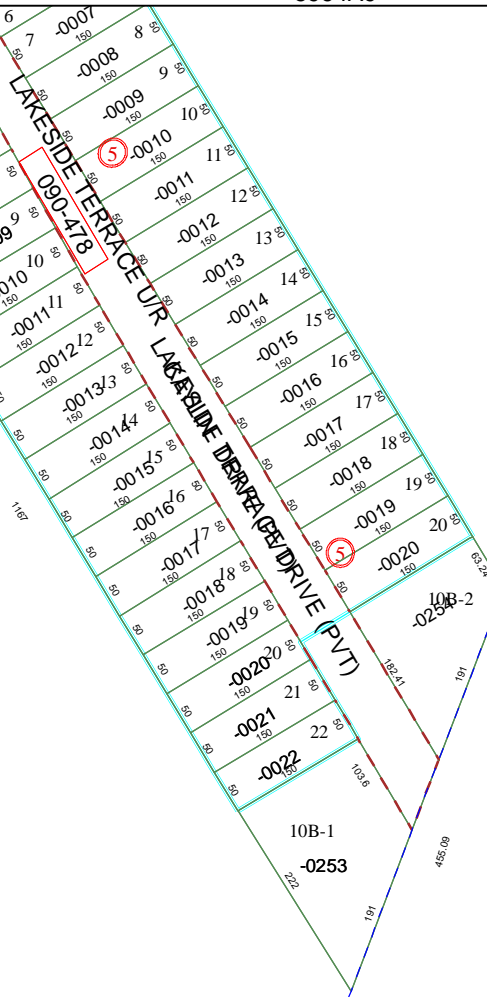


5964A9

HUMBLE I.S.D.  
SHELDON I.S.D.



5964C5

5864D4

# Harris County Appraisal District



0 100 200

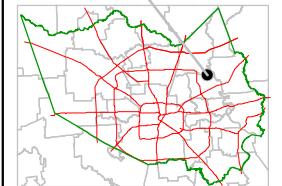
PUBLICATION DATE:  
12/7/2011

Geospatial or map data maintained by the Harris County Appraisal District is for informational purposes and may **not** have been prepared for or be suitable for legal, engineering, or surveying purposes. It does **not** represent an on-the-ground survey and only represents the approximate location of property boundaries.



5964C2

## MAP LOCATION



# FACET 5964C

1	2	3	4
5	6	7	8
9	10	11	12