

5963C5

32

831.26

416.61

691.82

35

36

37

38A-2

050-205-000-0117
6.6166 AC.

416.61

691.82

158.44

523.03

5863D12

312.96

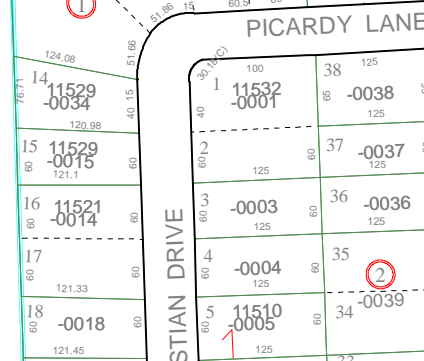
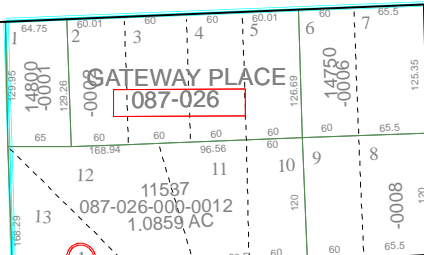
315.4

312.06

3

3A

3B



5962A1

Harris County Appraisal District



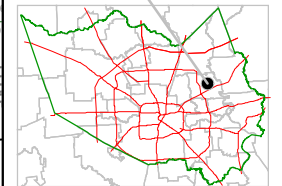
0 100 200

PUBLICATION DATE:
9/1/2011

Geospatial or map data maintained by the Harris County Appraisal District is for informational purposes and may not be suitable for legal, engineering, or surveying purposes. It does not represent an on-the-ground survey and only represents the approximate location of property boundaries.



MAP LOCATION



FACET 5963C

1	2	3	4
5	6	7	8
9	10	11	12

5963C10