

5963A10

# Harris County Appraisal District



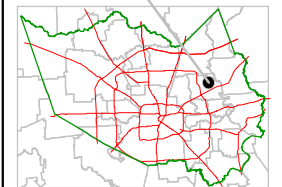
0 100 200

PUBLICATION DATE:  
5/23/2011

Geospatial or map data maintained by the Harris County Appraisal District is for informational purposes and may **not** be suitable for legal, engineering, or surveying purposes. It does **not** represent an on-the-ground survey and only represents the approximate location of property boundaries.



### MAP LOCATION



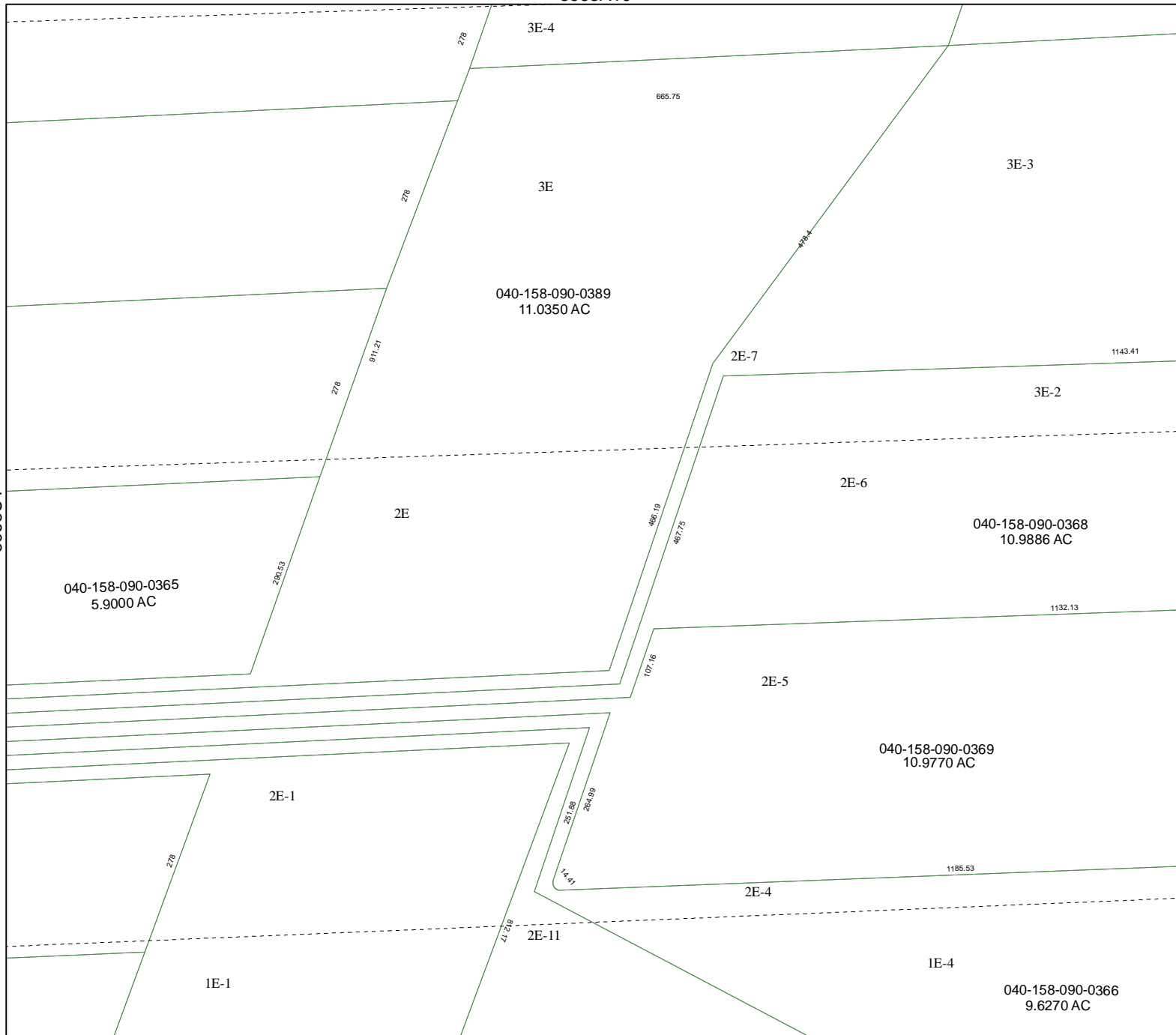
## FACET 5963C

|   |    |    |    |
|---|----|----|----|
| 1 | 2  | 3  | 4  |
| 5 | 6  | 7  | 8  |
| 9 | 10 | 11 | 12 |

5963C6

5963C1

5963C3



3E-4

665.75

3E

040-158-090-0389  
11.0350 AC

2E-7

1143.41

3E-3

3E-2

2E

2E-6

040-158-090-0368  
10.9886 AC

040-158-090-0365  
5.9000 AC

1132.13

2E-5

040-158-090-0369  
10.9770 AC

2E-1

1185.53

2E-4

1E-1

1E-4

040-158-090-0366  
9.6270 AC

2E-11