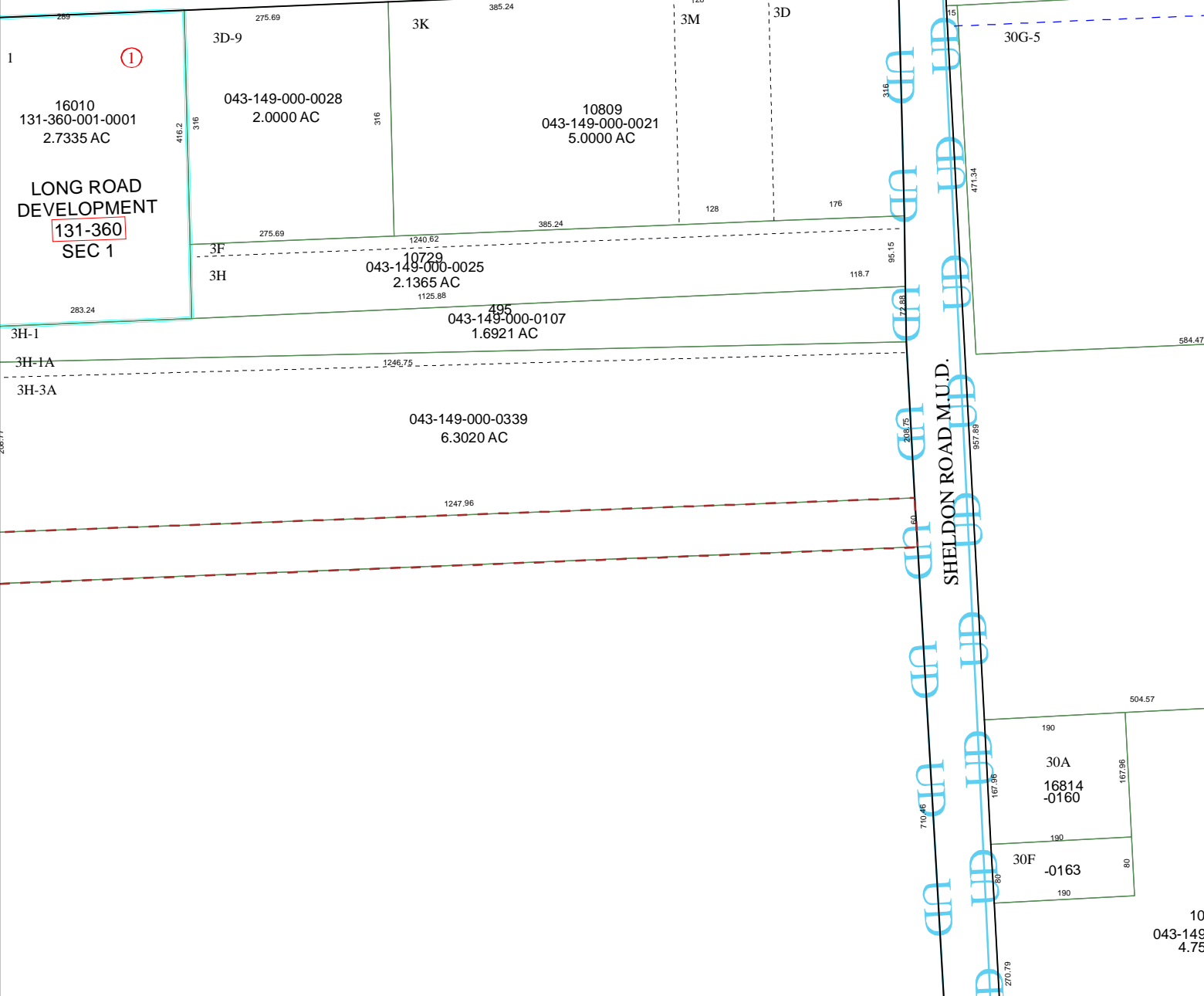


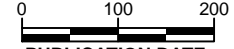
5962B6

LONG ROAD



5962D2

Harris County Appraisal District

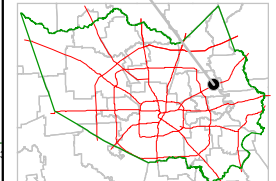


PUBLICATION DATE: 12/2/2011

Geospatial or map data maintained by the Harris County Appraisal District is for informational purposes and may not have been prepared for or be suitable for legal, engineering, or surveying purposes. It does not represent an on-the-ground survey and only represents the approximate location of property boundaries.



MAP LOCATION



FACET 5962B

1	2	3	4
5	6	7	8
9	10	11	12

5962B9

5962B11

SHELDON ROAD M.U.D.