

5961B4

1

Harris County Appraisal District



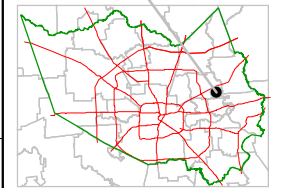
0 100 200

PUBLICATION DATE:
8/1/2011

Geospatial or map data maintained by the Harris County Appraisal District is for informational purposes and may **not** have been prepared for or be suitable for legal, engineering, or surveying purposes. It does **not** represent an on-the-ground survey and only represents the approximate location of property boundaries.

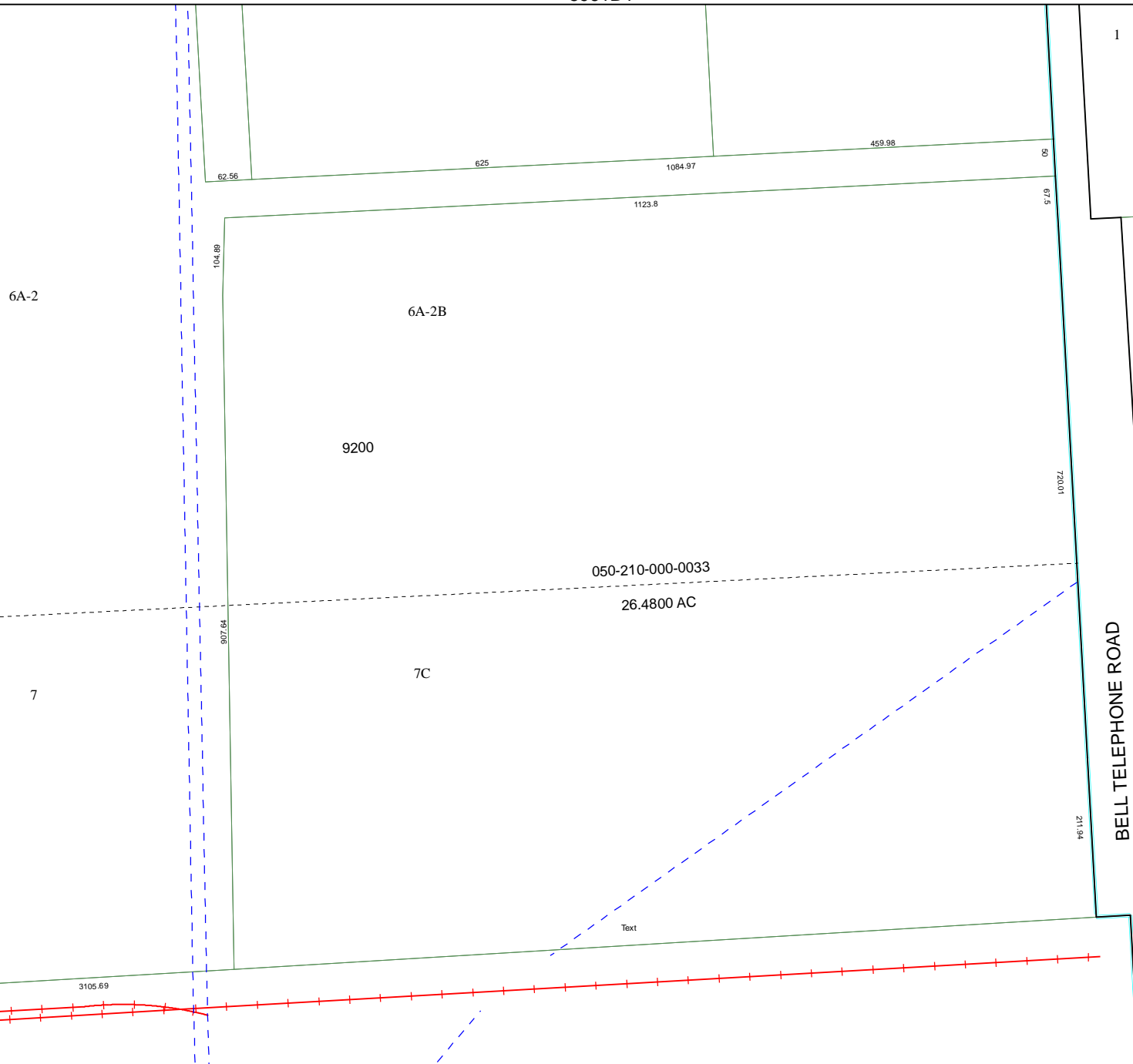


MAP LOCATION



FACET 5961B

1	2	3	4
5	6	7	8
9	10	11	12



5961B12

5961B7

7

18

18

3105.69

104.89

907.64

62.56

625

1123.8

1084.97

459.98

50

67.5

720.01

730.27(C)

4611.94