

5960D10

1903
132-949-001-0002
24.0000 AC
132-949-001-0001
57.3052 AC

Harris County Appraisal District



ATS SPECIALIZED SHEET
132-949

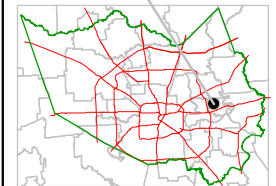
0 100 200

PUBLICATION DATE:
1/19/2012

Geospatial or map data maintained by the Harris County Appraisal District is for informational purposes and may **not** have been prepared for or be suitable for legal, engineering, or surveying purposes. It does **not** represent an on-the-ground survey and only represents the approximate location of property boundaries.



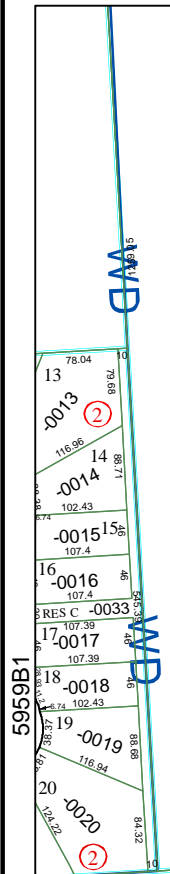
MAP LOCATION



FACET 5959B

1	2	3	4
5	6	7	8
9	10	11	12

5959B6



5959B3