

# Harris County Appraisal District

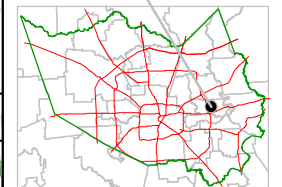


0 100 200

PUBLICATION DATE:  
8/15/2011

Geospatial or map data maintained by the Harris County Appraisal District is for informational purposes and may not be suitable for legal, engineering, or surveying purposes. It does not represent an on-the-ground survey and only represents the approximate location of property boundaries.

MAP LOCATION

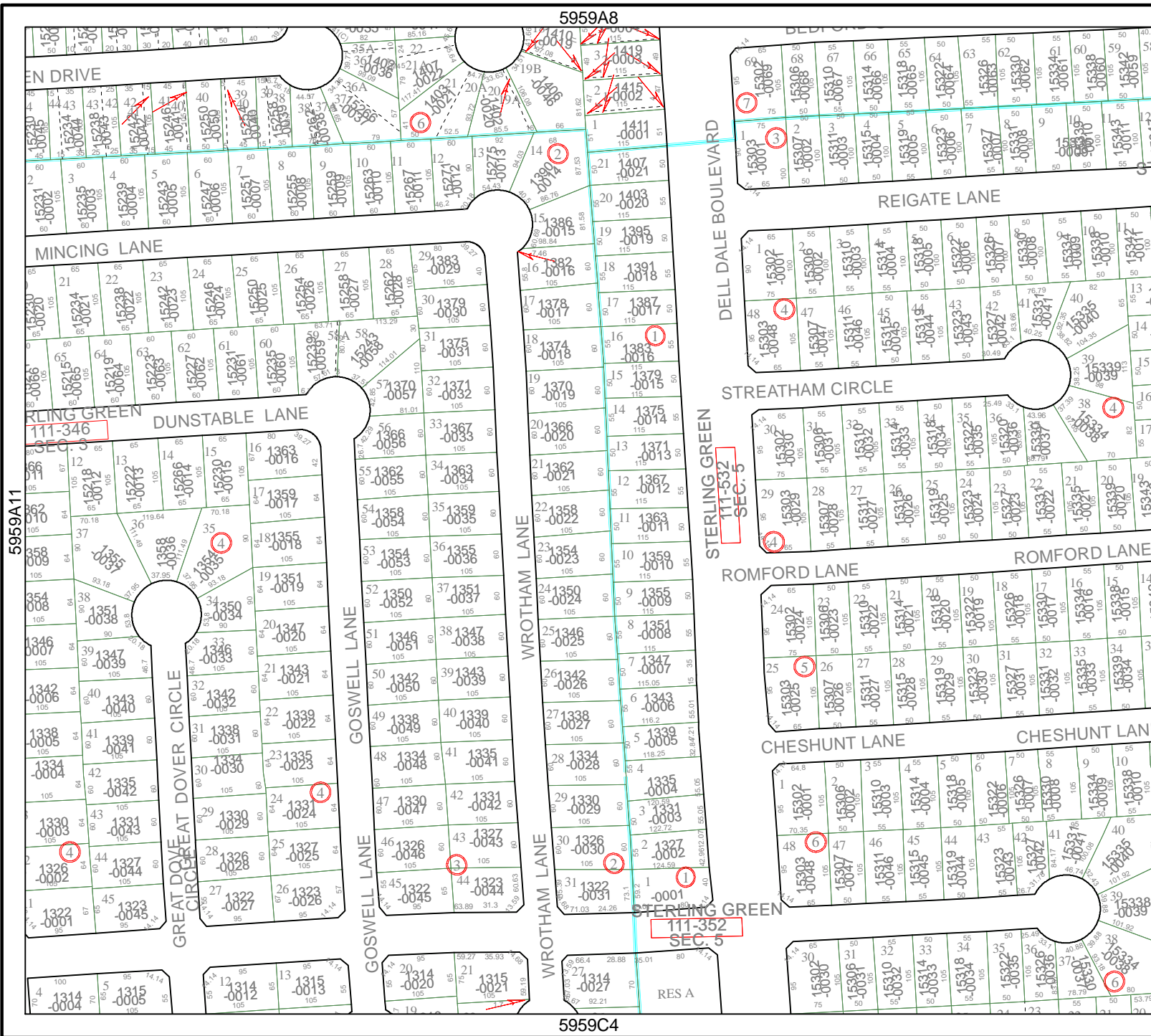


## FACET 5959A

1	2	3	4
5	6	7	8
9	10	11	12

5959A8

5959C4



5959A11

15231  
15232  
15233  
15234  
15235  
15236  
15237  
15238  
15239  
15240  
15241  
15242  
15243  
15244  
15245  
15246  
15247  
15248  
15249  
15250  
15251  
15252  
15253  
15254  
15255  
15256  
15257  
15258  
15259  
15260  
15261  
15262  
15263  
15264  
15265  
15266  
15267  
15268  
15269  
15270  
15271  
15272  
15273  
15274  
15275  
15276  
15277  
15278  
15279  
15280  
15281  
15282  
15283  
15284  
15285  
15286  
15287  
15288  
15289  
15290  
15291  
15292  
15293  
15294  
15295  
15296  
15297  
15298  
15299  
15300  
15301  
15302  
15303  
15304  
15305  
15306  
15307  
15308  
15309  
15310  
15311  
15312  
15313  
15314  
15315  
15316  
15317  
15318  
15319  
15320  
15321  
15322  
15323  
15324  
15325  
15326  
15327  
15328  
15329  
15330  
15331  
15332  
15333  
15334  
15335  
15336  
15337  
15338  
15339  
15340  
15341  
15342  
15343  
15344  
15345  
15346  
15347  
15348  
15349  
15350  
15351  
15352  
15353  
15354  
15355  
15356  
15357  
15358  
15359  
15360  
15361  
15362  
15363  
15364  
15365  
15366  
15367  
15368  
15369  
15370  
15371  
15372  
15373  
15374  
15375  
15376  
15377  
15378  
15379  
15380  
15381  
15382  
15383  
15384  
15385  
15386  
15387  
15388  
15389  
15390  
15391  
15392  
15393  
15394  
15395  
15396  
15397  
15398  
15399  
15400

111-352  
SEC. 5

111-322  
SEC. 3

RES A