

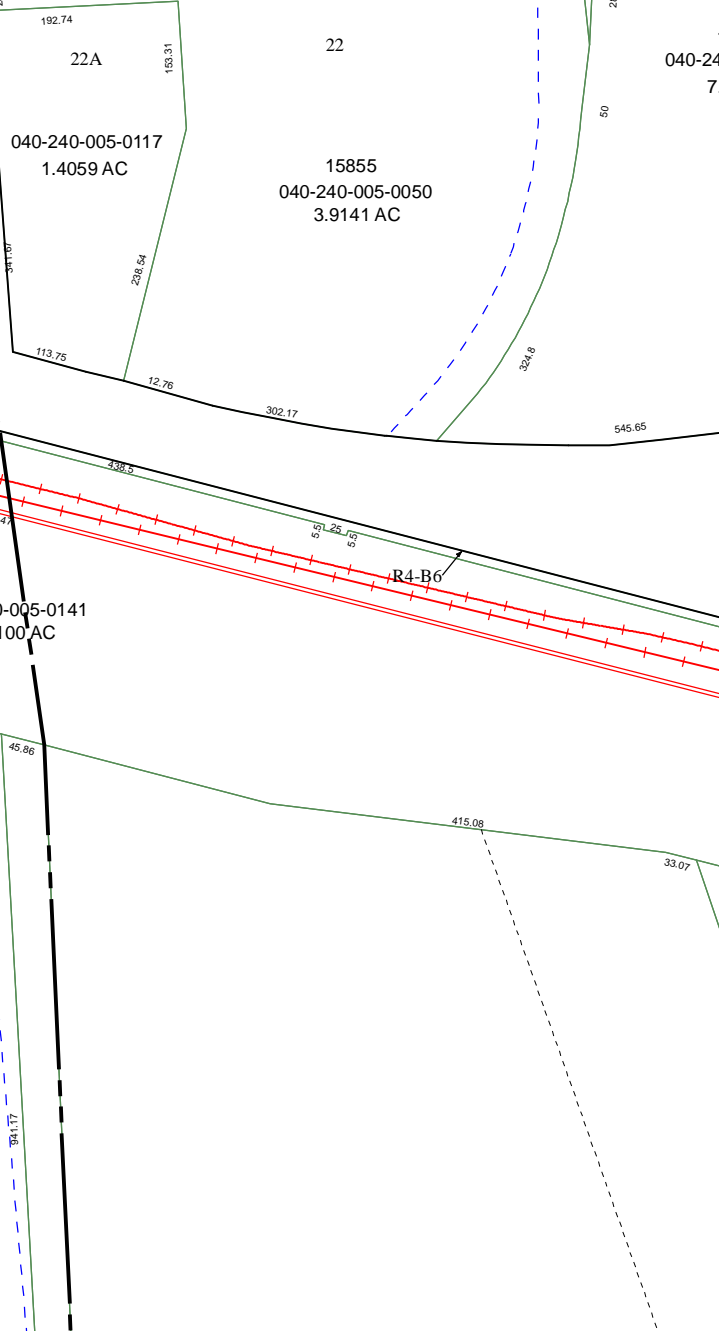
5957B12

SHELDON ROAD

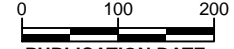
JACINTO PORT BOULEVARD

5957D3

5957D8



Harris County Appraisal District

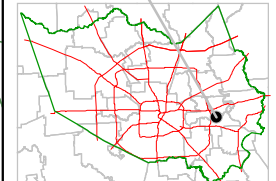


PUBLICATION DATE:
1/10/2012

Geospatial or map data maintained by the Harris County Appraisal District is for informational purposes and may **not** have been prepared for or be suitable for legal, engineering, or surveying purposes. It does **not** represent an on-the-ground survey and only represents the approximate location of property boundaries.



MAP LOCATION



FACET 5957D

1	2	3	4
5	6	7	8
9	10	11	12