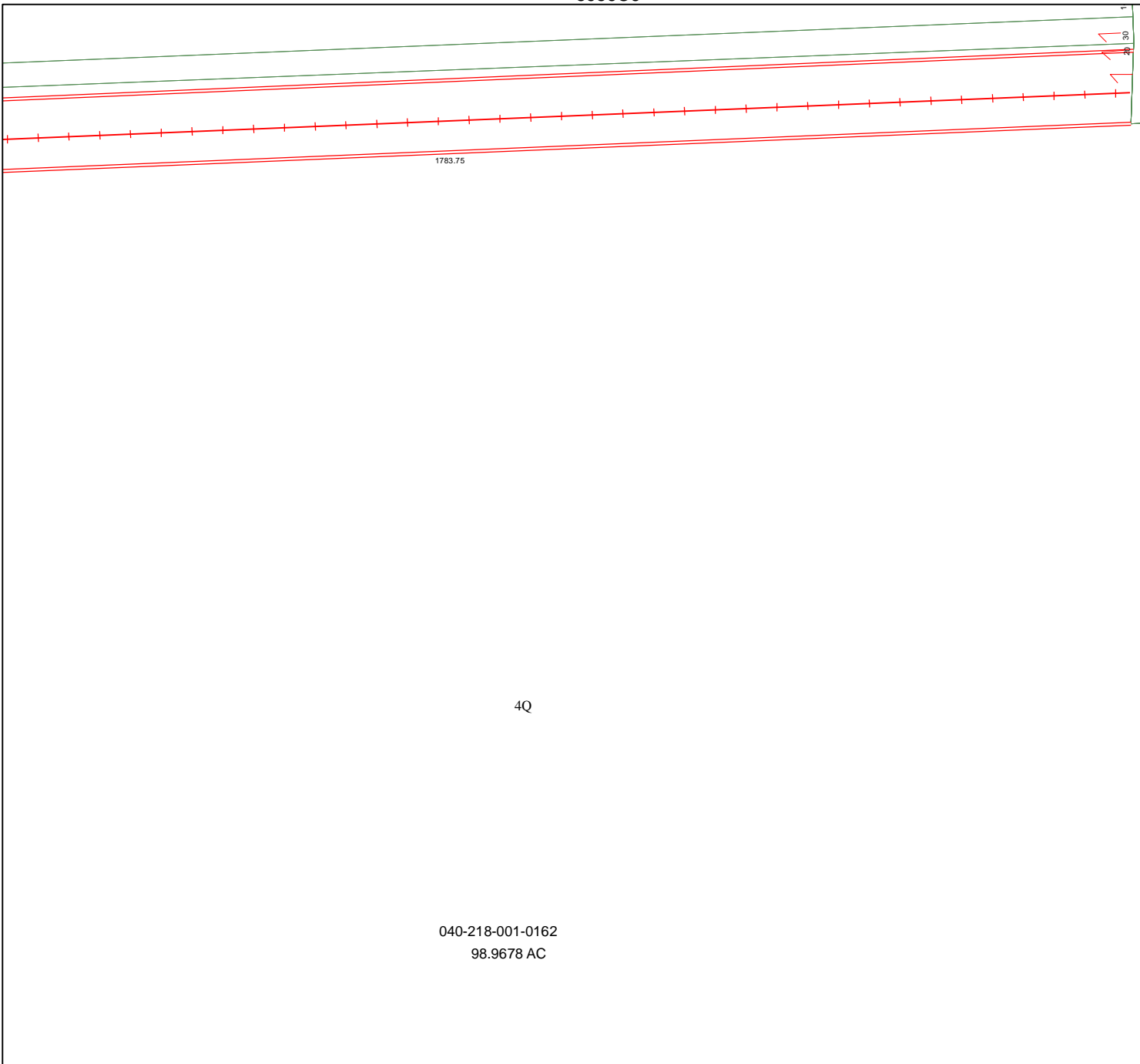


5956C6

5956C9



040-218-001-0162
98.9678 AC

5955A2

Harris County Appraisal District



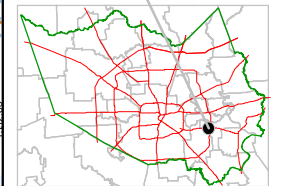
0 100 200

PUBLICATION DATE:
10/1/2011

Geospatial or map data maintained by the Harris County Appraisal District is for informational purposes and may **not** have been prepared for or be suitable for legal, engineering, or surveying purposes. It does **not** represent an on-the-ground survey and only represents the approximate location of property boundaries.



MAP LOCATION



FACET 5956C

1	2	3	4
5	6	7	8
9	10	11	12