

# Harris County Appraisal District



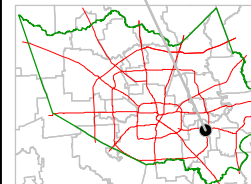
0 100 200

PUBLICATION DATE:  
8/15/2011

Geospatial or map data maintained by the Harris County Appraisal District is for informational purposes and may not be prepared for or be suitable for legal, engineering, or surveying purposes. It does not represent an on-the-ground survey and only represents the approximate location of property boundaries.

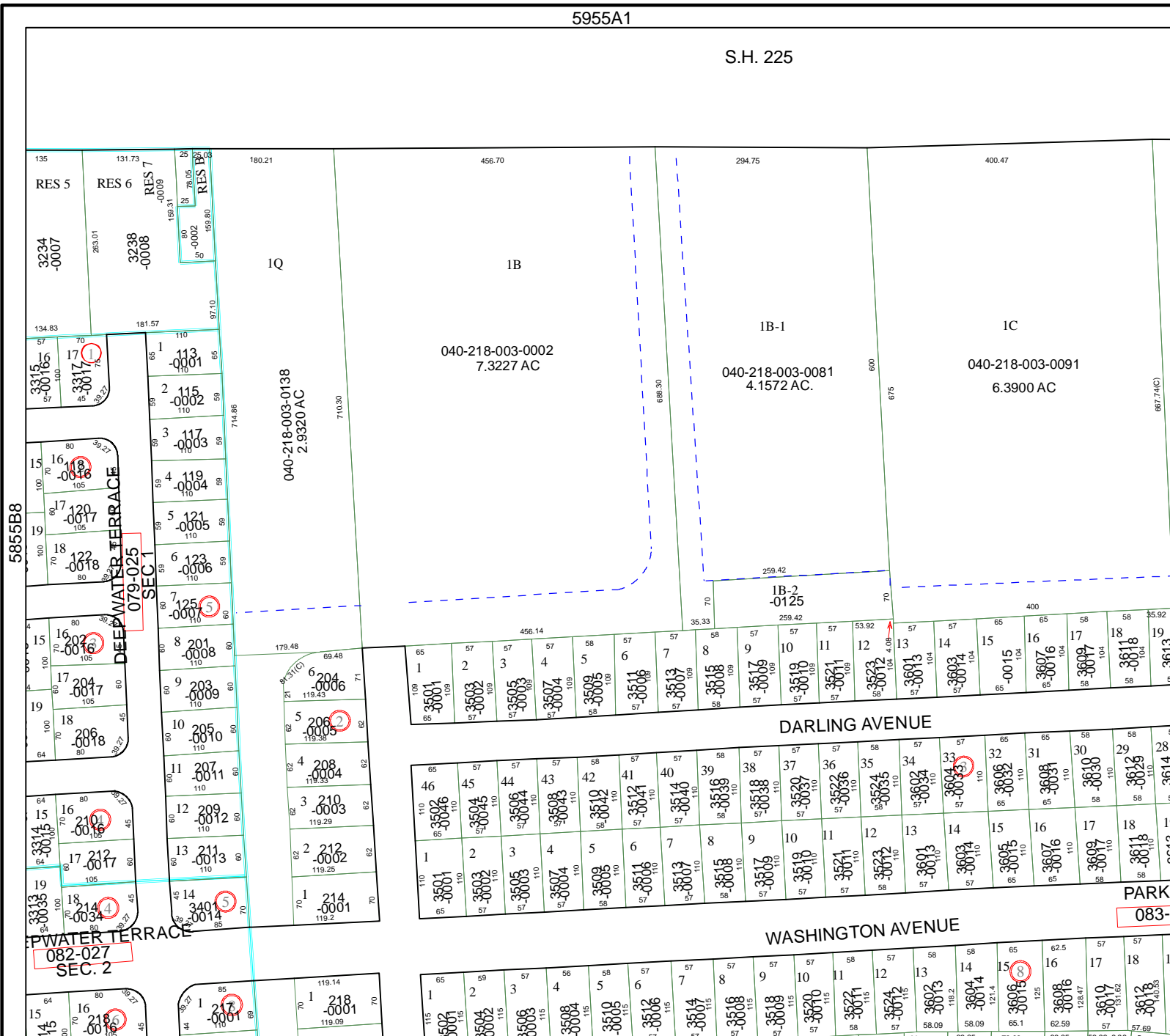


MAP LOCATION



## FACET 5955A

1	2	3	4
5	6	7	8
9	10	11	12



5855B8

5955A6

082-027  
SEC. 2

083-2

079-025  
SEC. 1

040-218-003-0138  
2.9320 AC

040-218-003-0002  
7.3227 AC

040-218-003-0081  
4.1572 AC.

040-218-003-0091  
6.3900 AC

DARLING AVENUE

WASHINGTON AVENUE

PARKWAY  
083-2