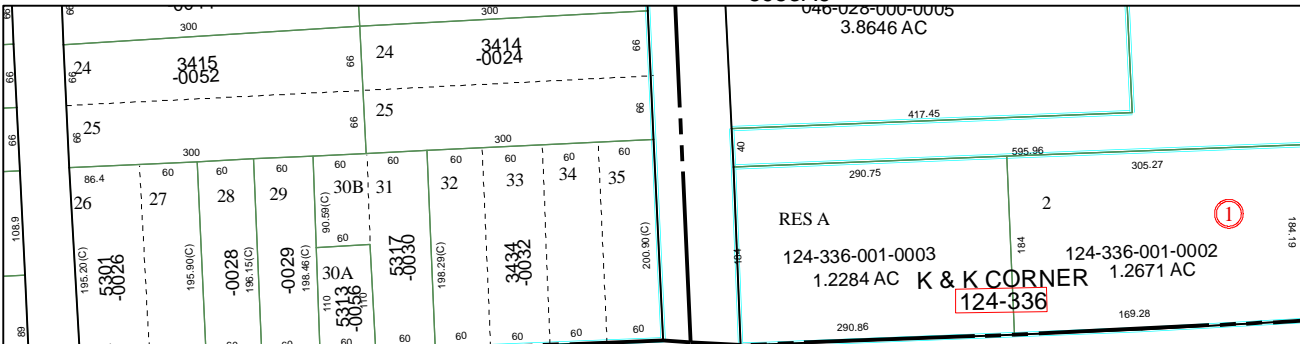


5953A6



5953C2

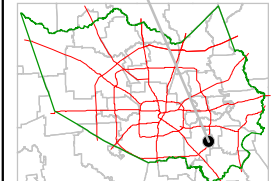
Harris County Appraisal District



0 100 200
 PUBLICATION DATE:
 2/1/2012

Geospatial or map data maintained by the Harris County Appraisal District is for informational purposes and may not have been prepared for or be suitable for legal, engineering, or surveying purposes. It does not represent an on-the-ground survey and only represents the approximate location of property boundaries.

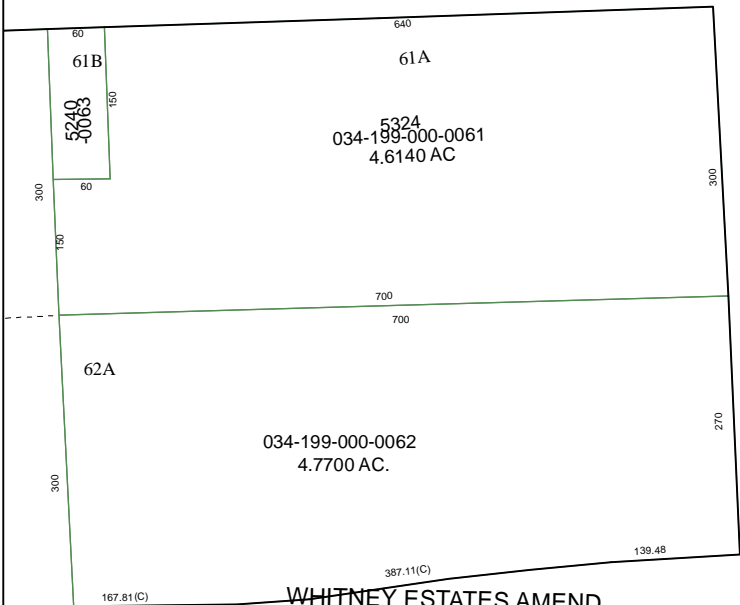
MAP LOCATION



FACET 5953A

1	2	3	4
5	6	7	8
9	10	11	12

5953A9



WHITNEY ESTATES AMEND
 119-357

LILAC STREET (CLOSED)

