

5951D8

Harris County Appraisal District

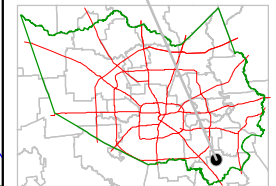


0 100 200

PUBLICATION DATE:
8/26/2011

Geospatial or map data maintained by the Harris County Appraisal District is for informational purposes and may not have been prepared for or be suitable for legal, engineering, or surveying purposes. It does not represent an on-the-ground survey and only represents the approximate location of property boundaries.

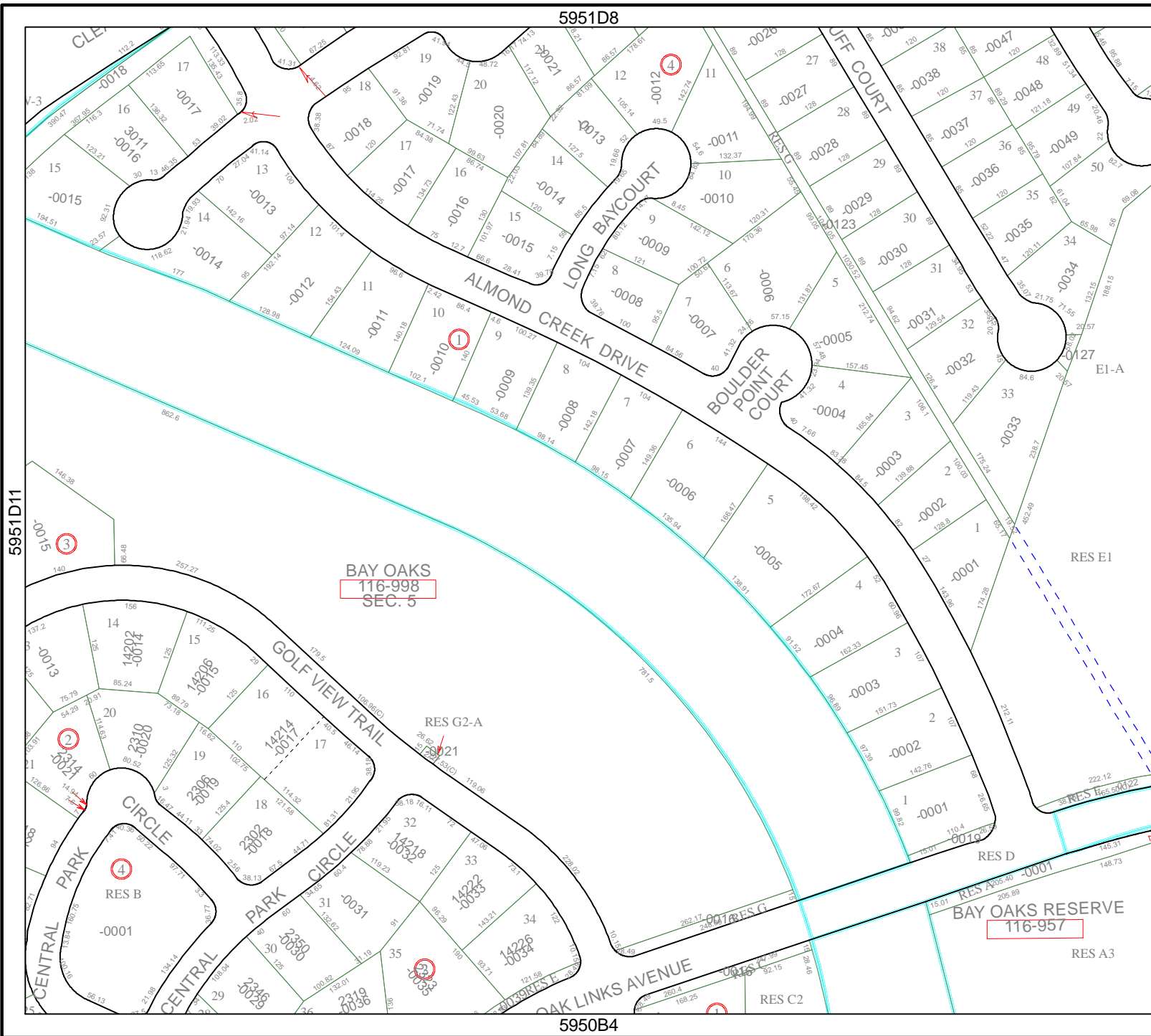
MAP LOCATION



FACET 5951D

1	2	3	4
5	6	7	8
9	10	11	12

5950B4



BAY OAKS
116-998
SEC. 5

BAY OAKS RESERVE
116-957

5951D11

6051C9

