

# Harris County Appraisal District



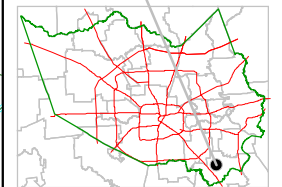
0 100 200

PUBLICATION DATE:  
8/15/2011

Geospatial or map data maintained by the Harris County Appraisal District is for informational purposes and may not have been prepared for or be suitable for legal, engineering, or surveying purposes. It does not represent an on-the-ground survey and only represents the approximate location of property boundaries.



## MAP LOCATION

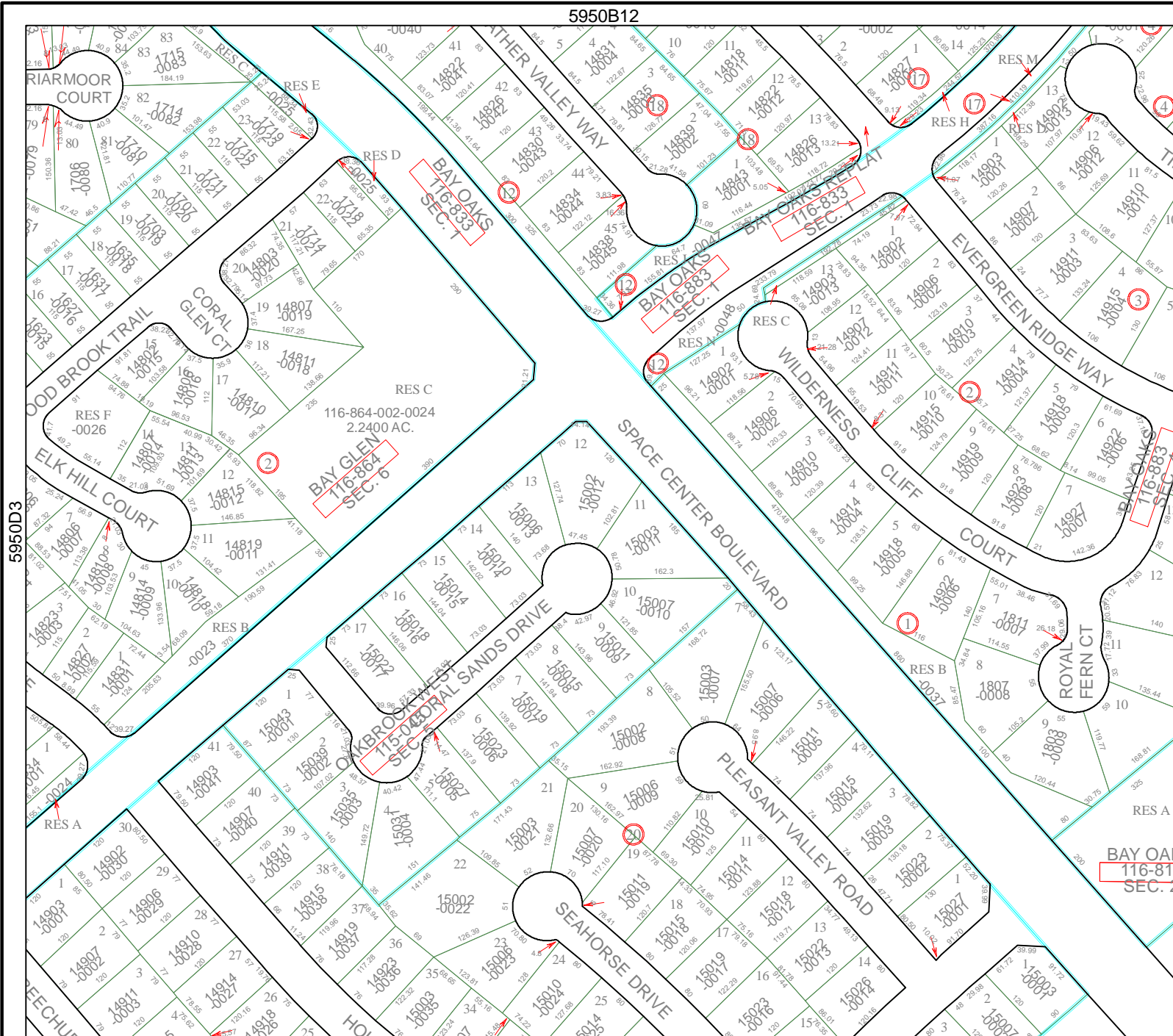


# FACET 5950D

1	2	3	4
5	6	7	8
9	10	11	12

5950B12

5950D8



5950D3

6050C1

RES C  
116-864-002-0024  
2.2400 AC.

BAY OAKS  
116-810  
SEC. 2