

5950B5

5950D1

SEC.3  
RES C  
117-489-004-0028  
2.6510 AC.

# Harris County Appraisal District

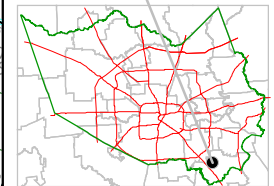


0 100 200

PUBLICATION DATE:  
9/1/2011

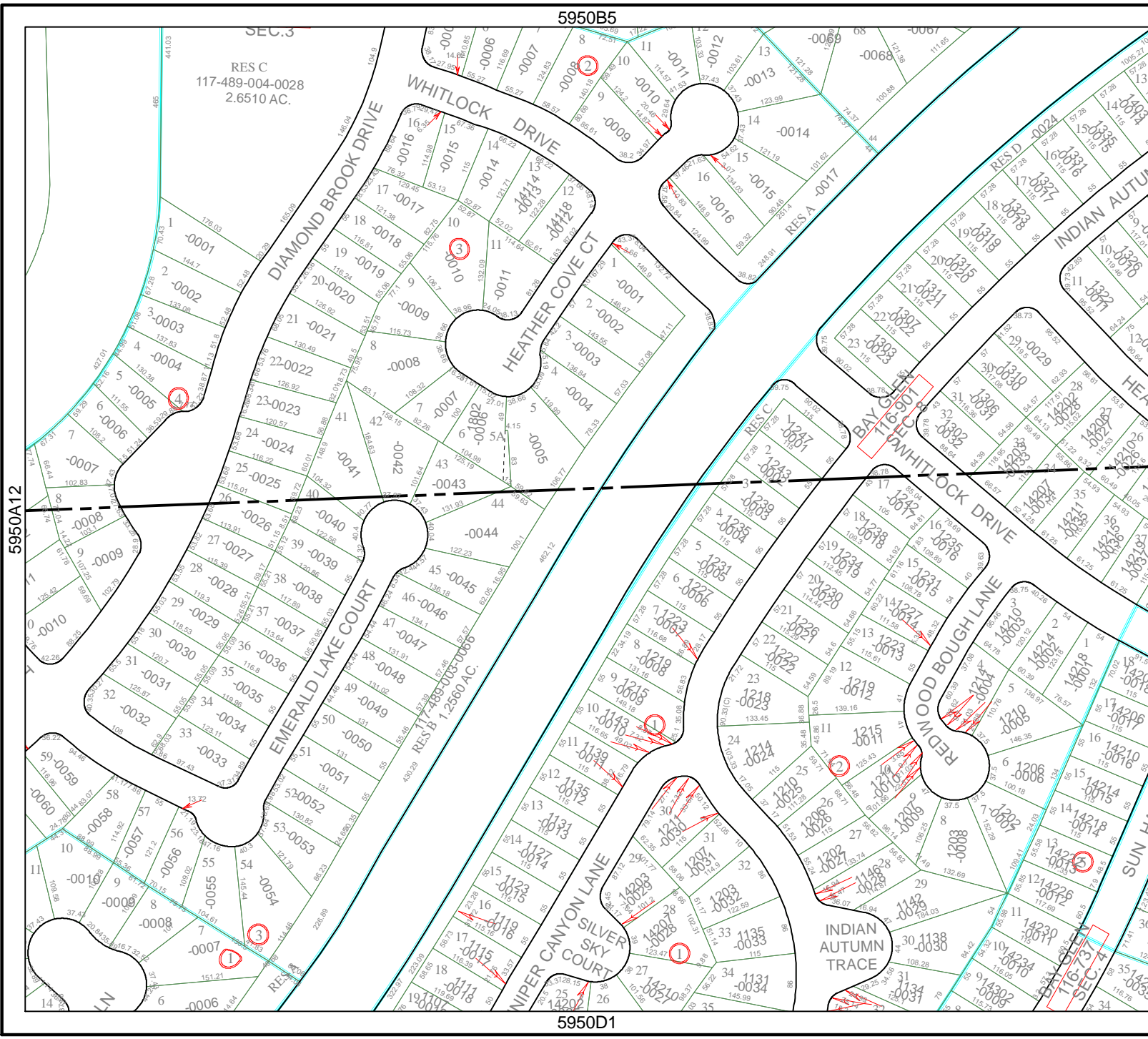
Geospatial or map data maintained by the Harris County Appraisal District is for informational purposes and may not have been prepared for or be suitable for legal, engineering, or surveying purposes. It does not represent an on-the-ground survey and only represents the approximate location of property boundaries.

MAP LOCATION



## FACET 5950B

1	2	3	4
5	6	7	8
9	10	11	12



5950A12

5950B10

