

5950A2

5950A5

Harris County Appraisal District



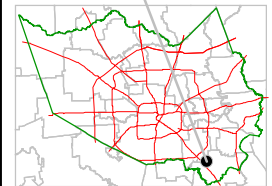
0 100 200

PUBLICATION DATE:
8/15/2011

Geospatial or map data maintained by the Harris County Appraisal District is for informational purposes and may **not** have been prepared for or be suitable for legal, engineering, or surveying purposes. It does **not** represent an on-the-ground survey and only represents the approximate location of property boundaries.

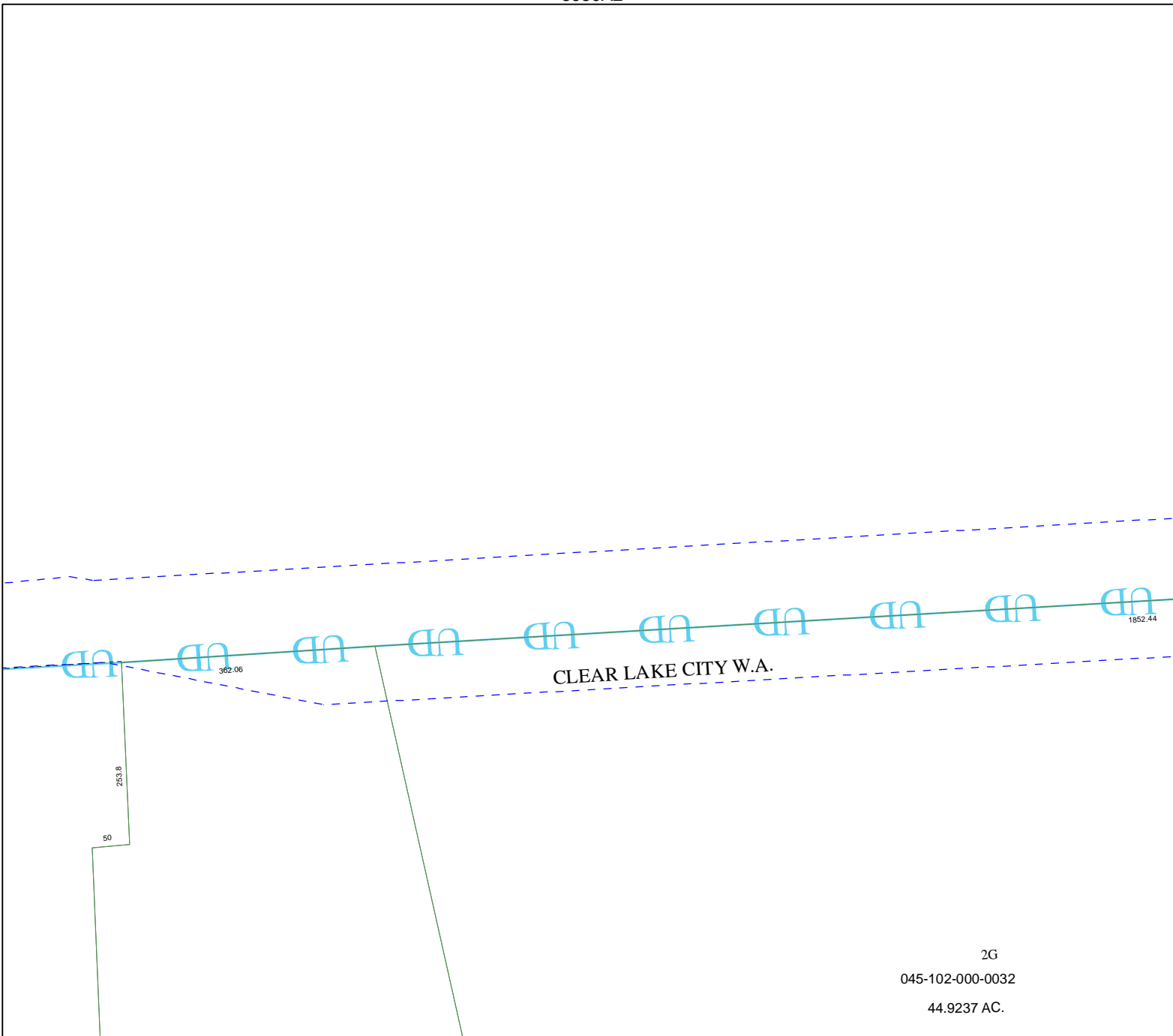


MAP LOCATION



FACET 5950A

1	2	3	4
5	6	7	8
9	10	11	12



2G

045-102-000-0032

44.9237 AC.

5950A10