

5871D12

N89-20-07W

1052.75

N85-27-59W

1630.54

1

Harris County Appraisal District



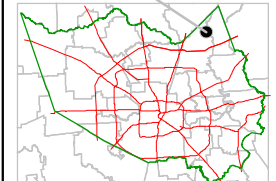
0 100 200

PUBLICATION DATE:
7/20/2011

Geospatial or map data maintained by the Harris County Appraisal District is for informational purposes and may not have been prepared for or be suitable for legal, engineering, or surveying purposes. It does not represent an on-the-ground survey and only represents the approximate location of property boundaries.



MAP LOCATION



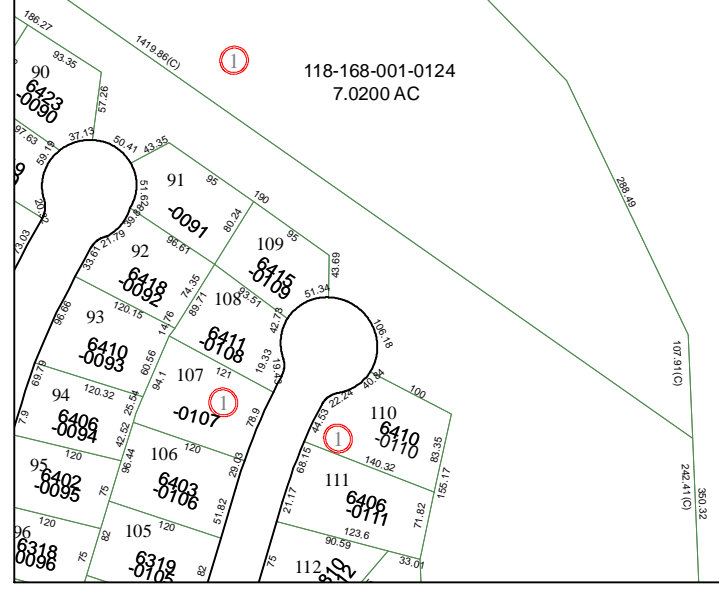
FACET 5870B

1	2	3	4
5	6	7	8
9	10	11	12

5870B3

RES A1

118-168-001-0124
7.0200 AC



5870B8

5970A1