

5868A2

Harris County Appraisal District



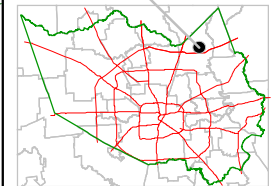
0 100 200

PUBLICATION DATE:
6/1/2011

Geospatial or map data maintained by the Harris County Appraisal District is for informational purposes and may not have been prepared for or be suitable for legal, engineering, or surveying purposes. It does not represent an on-the-ground survey and only represents the approximate location of property boundaries.



MAP LOCATION



FACET 5868A

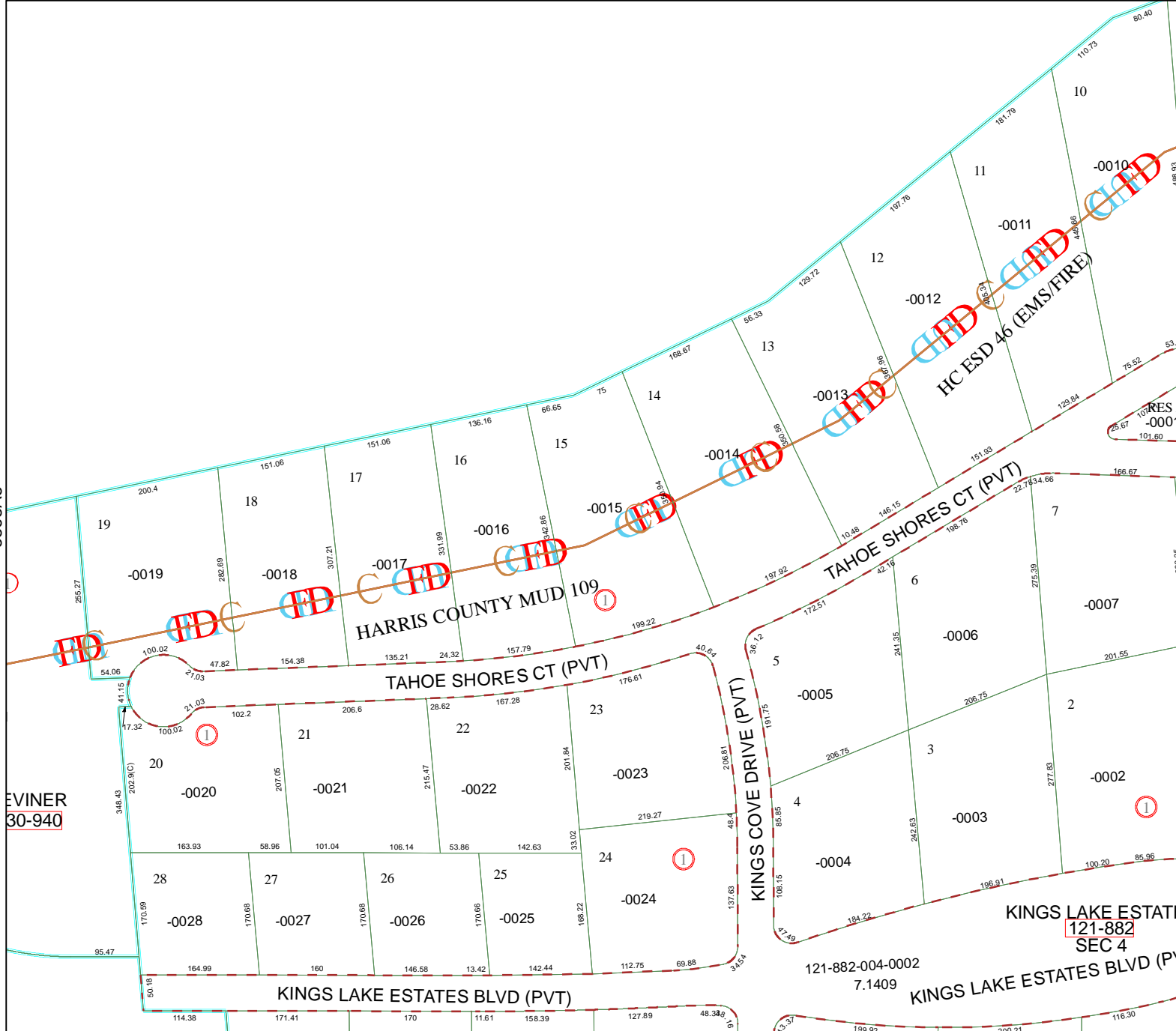
1	2	3	4
5	6	7	8
9	10	11	12

5868A5

5868A7

5868A10

EVINER
30-940



KINGS LAKE ESTATE
121-882
SEC 4

121-882-004-0002
7.1409

KINGS LAKE ESTATES BLVD (PVT)