

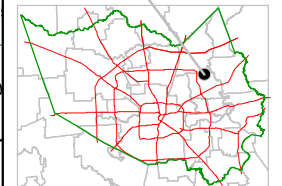
Harris County Appraisal District



0 100 200
 PUBLICATION DATE:
 10/18/2011

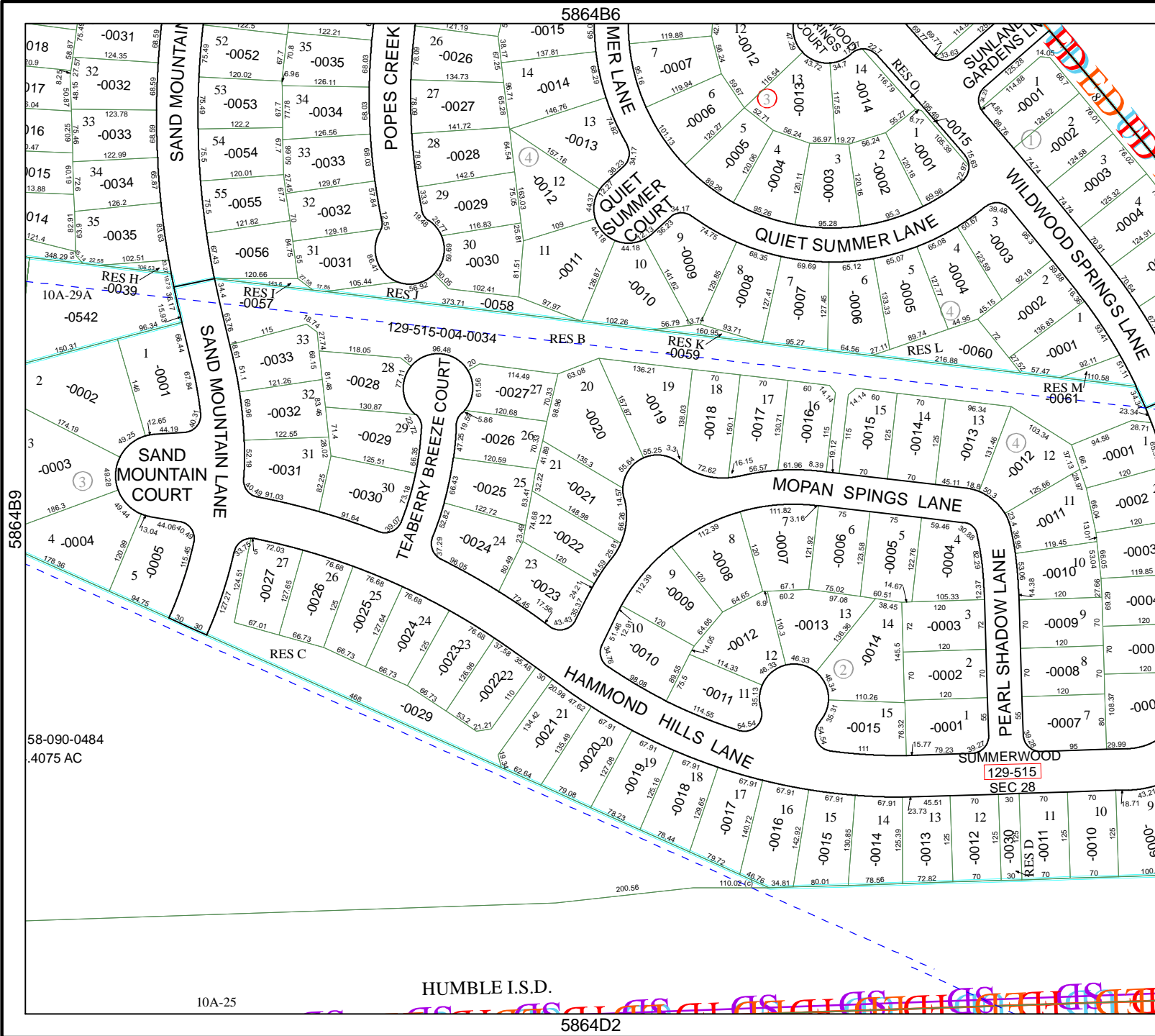
Geospatial or map data maintained by the Harris County Appraisal District is for informational purposes and may not be prepared for or be suitable for legal, engineering, or surveying purposes. It does not represent an on-the-ground survey and only represents the approximate location of property boundaries.

MAP LOCATION



FACET 5864B

1	2	3	4
5	6	7	8
9	10	11	12



HUMBLE I.S.D.

5864D2

10A-25

58-090-0484
 4075 AC

5864B9

5864B11

5864B6

129-515
 SEC 28