

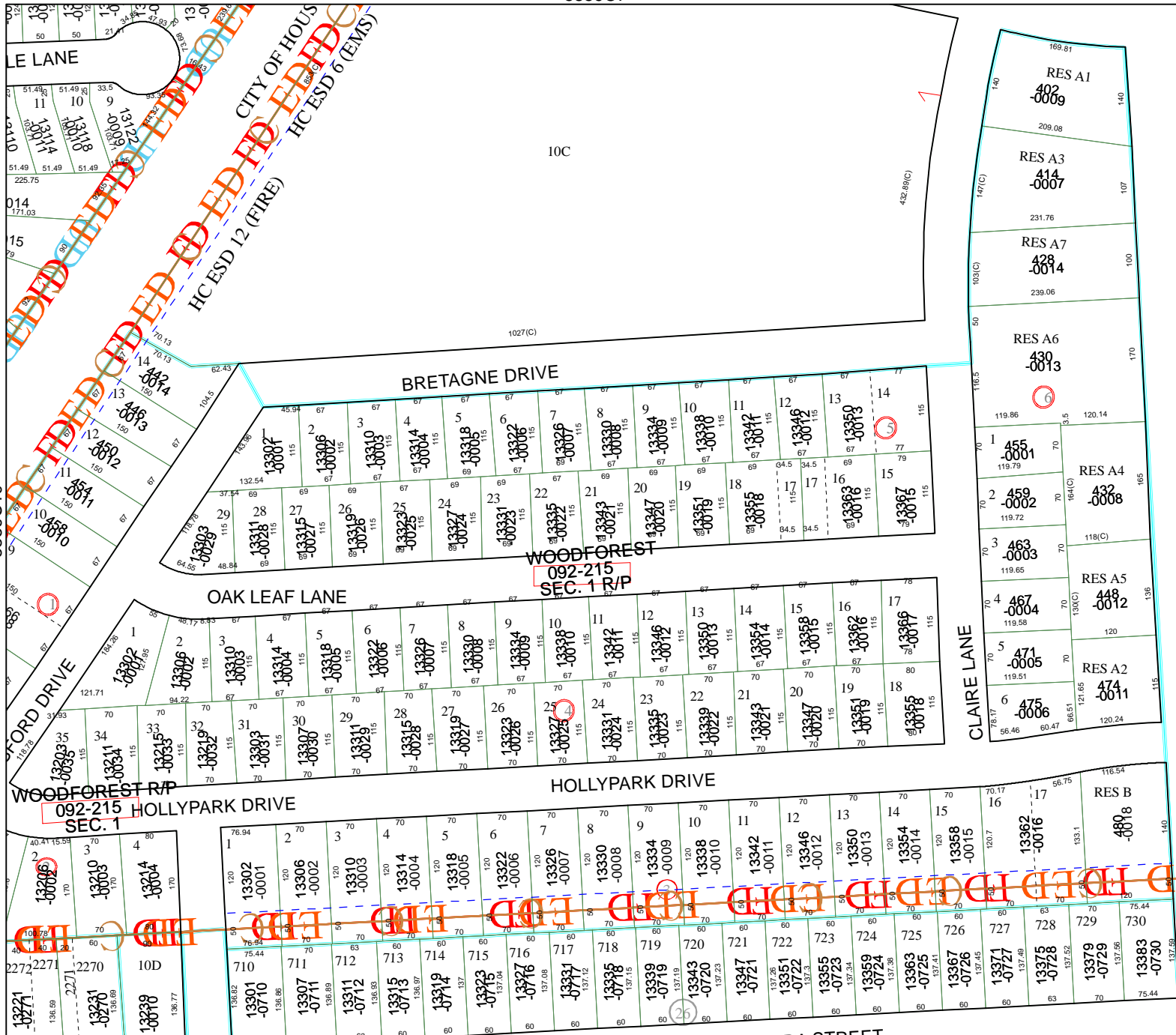
5859C7

10C

WOODFOREST ST
092-215
SEC. 1 Z/P

HOLLYPARK DRIVE

5858A3



Harris County Appraisal District

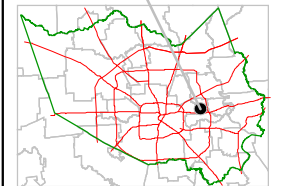


0 100 200

PUBLICATION DATE:
8/15/2011

Geospatial or map data maintained by the Harris County Appraisal District is for informational purposes and may not be suitable for legal, engineering, or surveying purposes. It does not represent an on-the-ground survey and only represents the approximate location of property boundaries.

MAP LOCATION



FACET 5859C

1	2	3	4
5	6	7	8
9	10	11	12

