

5859C9

115-831-001-000 RIVIERA PINES CONDO
6.9703 AC. 115-831

RES A
117-621-001-0001
8.9919 AC.

NORMANDY SQUARE 2nd REPLAT
117-621

RES A
112-376-000-0031
1.9820 AC.

5858A5

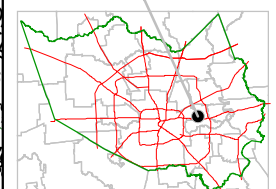
Harris County Appraisal District



0 100 200
PUBLICATION DATE:
8/15/2011

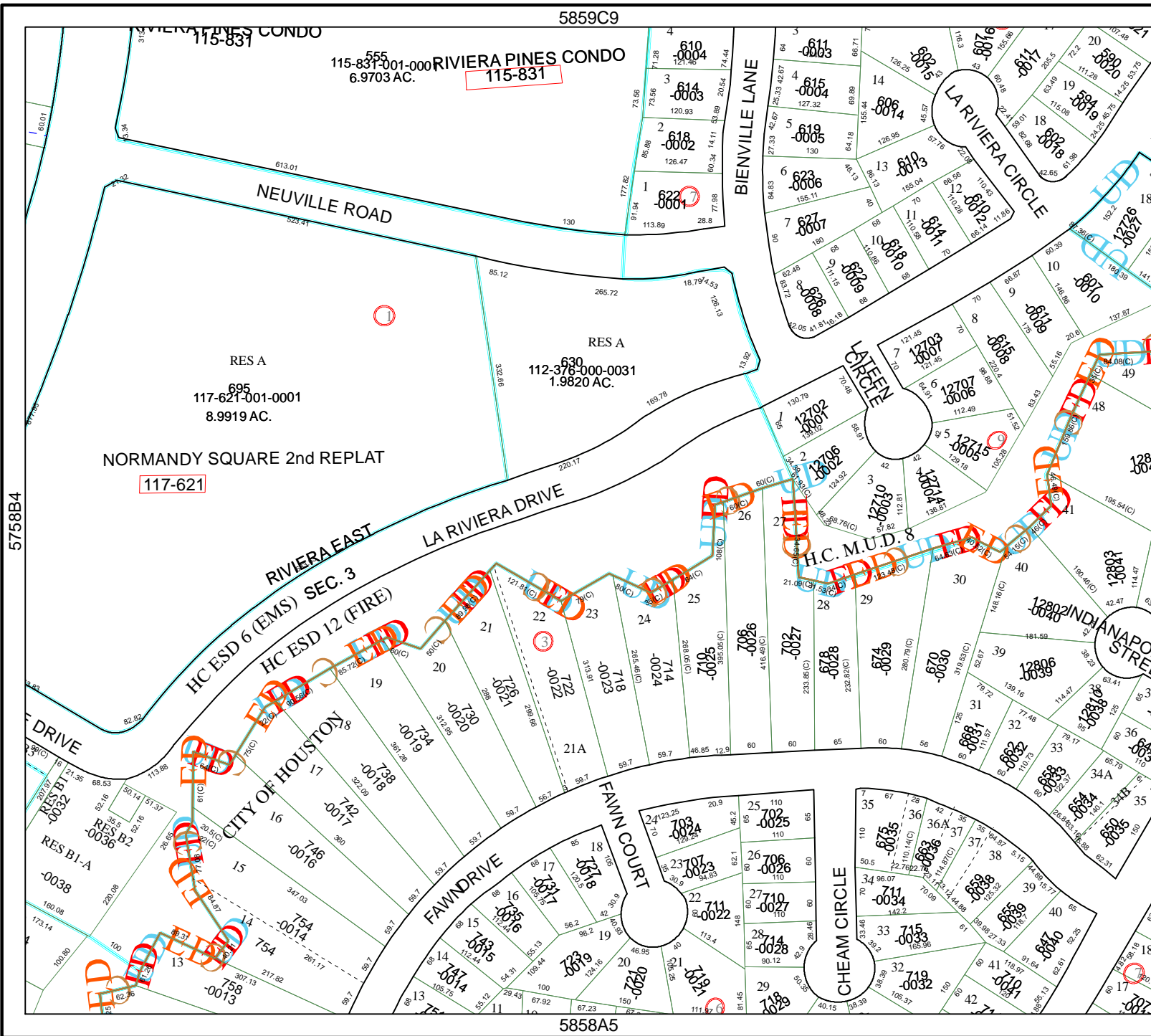
Geospatial or map data maintained by the Harris County Appraisal District is for informational purposes and may not be prepared for or be suitable for legal, engineering, or surveying purposes. It does not represent an on-the-ground survey and only represents the approximate location of property boundaries.

MAP LOCATION



FACET 5858A

1	2	3	4
5	6	7	8
9	10	11	12



5758B4

5858A2

