

5856D2

045-002-001-0  
30.9704 AC

# Harris County Appraisal District

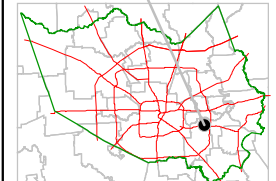


PUBLICATION DATE:  
8/15/2011

Geospatial or map data maintained by the Harris County Appraisal District is for informational purposes and may **not** have been prepared for or be suitable for legal, engineering, or surveying purposes. It does **not** represent an on-the-ground survey and only represents the approximate location of property boundaries.



### MAP LOCATION

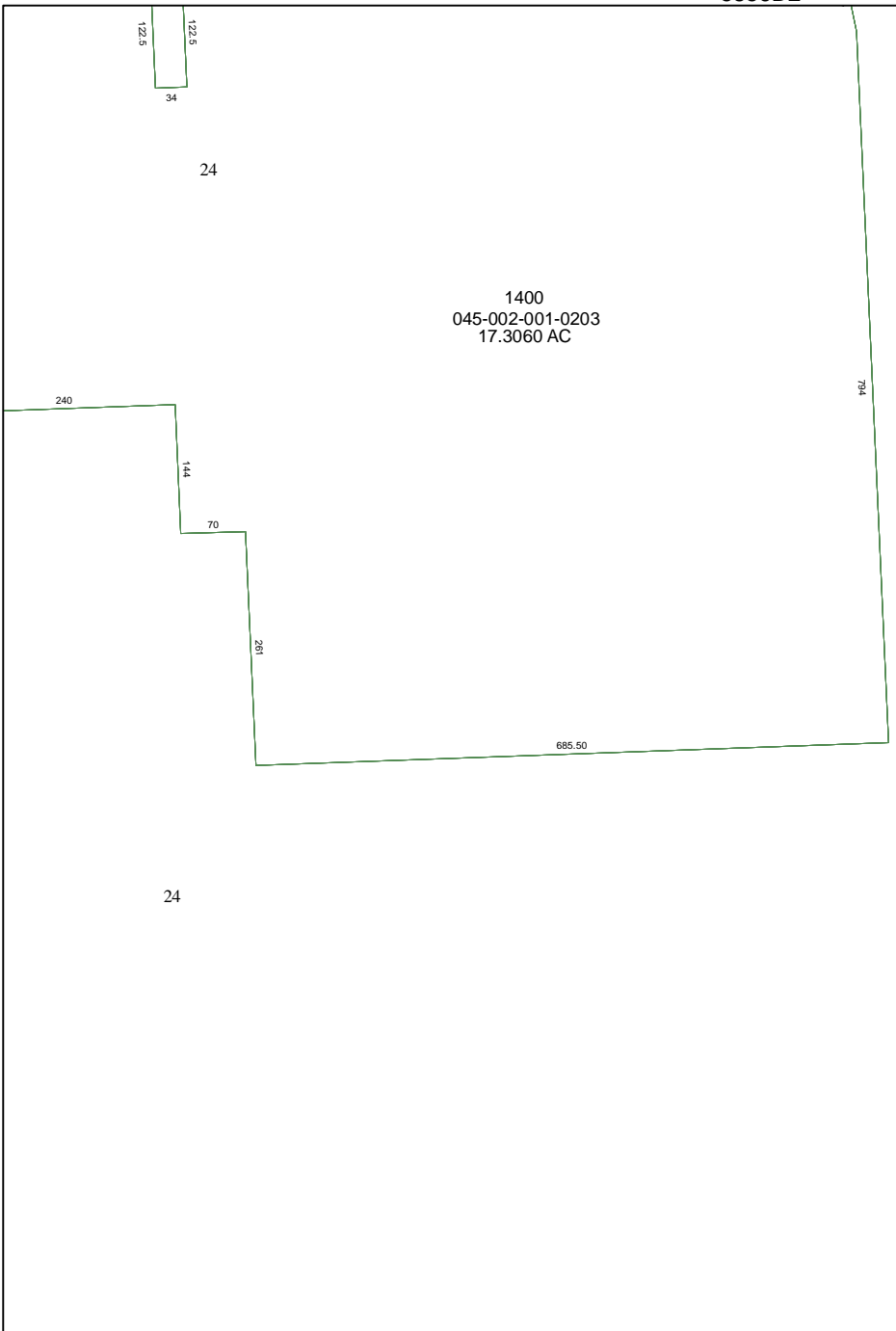


## FACET 5856D

1	2	3	4
5	6	7	8
9	10	11	12

5856D10

5856D5



PHILLIPS CO. PRIVATE ROAD

5856D7