

5854C7

CAMDEN ROAD

DUNSTAN ROAD

EVERGLADE DRIVE

GLENCREST DRIVE

PARKSIDE DRIVE

(PRIVATE ROAD)

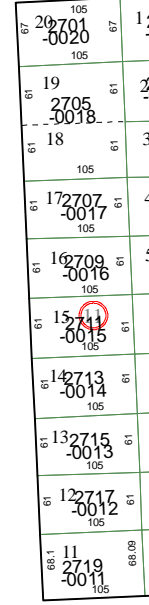
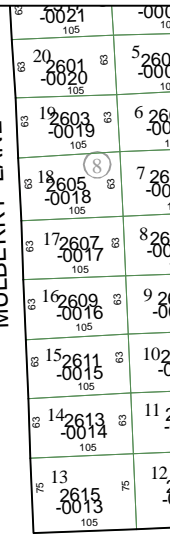
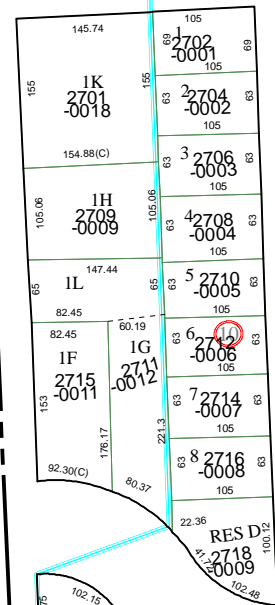
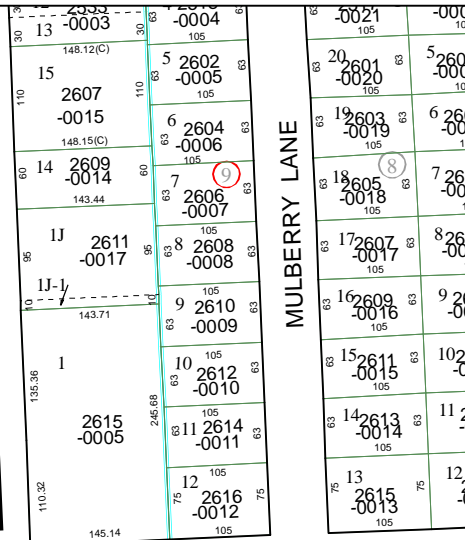
JONES BOULEVARD

TARRYTOWN
091-057
SEC. 3

5854C10

3C

5853A3



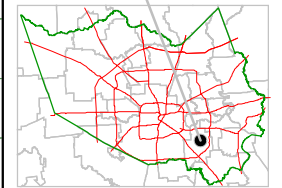
Harris County Appraisal District



PUBLICATION DATE:
8/15/2011

Geospatial or map data maintained by the Harris County Appraisal District is for informational purposes and may not be prepared for or be suitable for legal, engineering, or surveying purposes. It does not represent an on-the-ground survey and only represents the approximate location of property boundaries.

MAP LOCATION



FACET 5854C

1	2	3	4
5	6	7	8
9	10	11	12

