

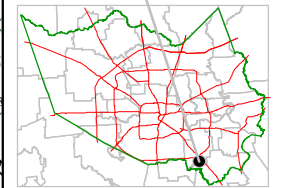
Harris County Appraisal District



0 100 200
 PUBLICATION DATE:
 8/15/2011

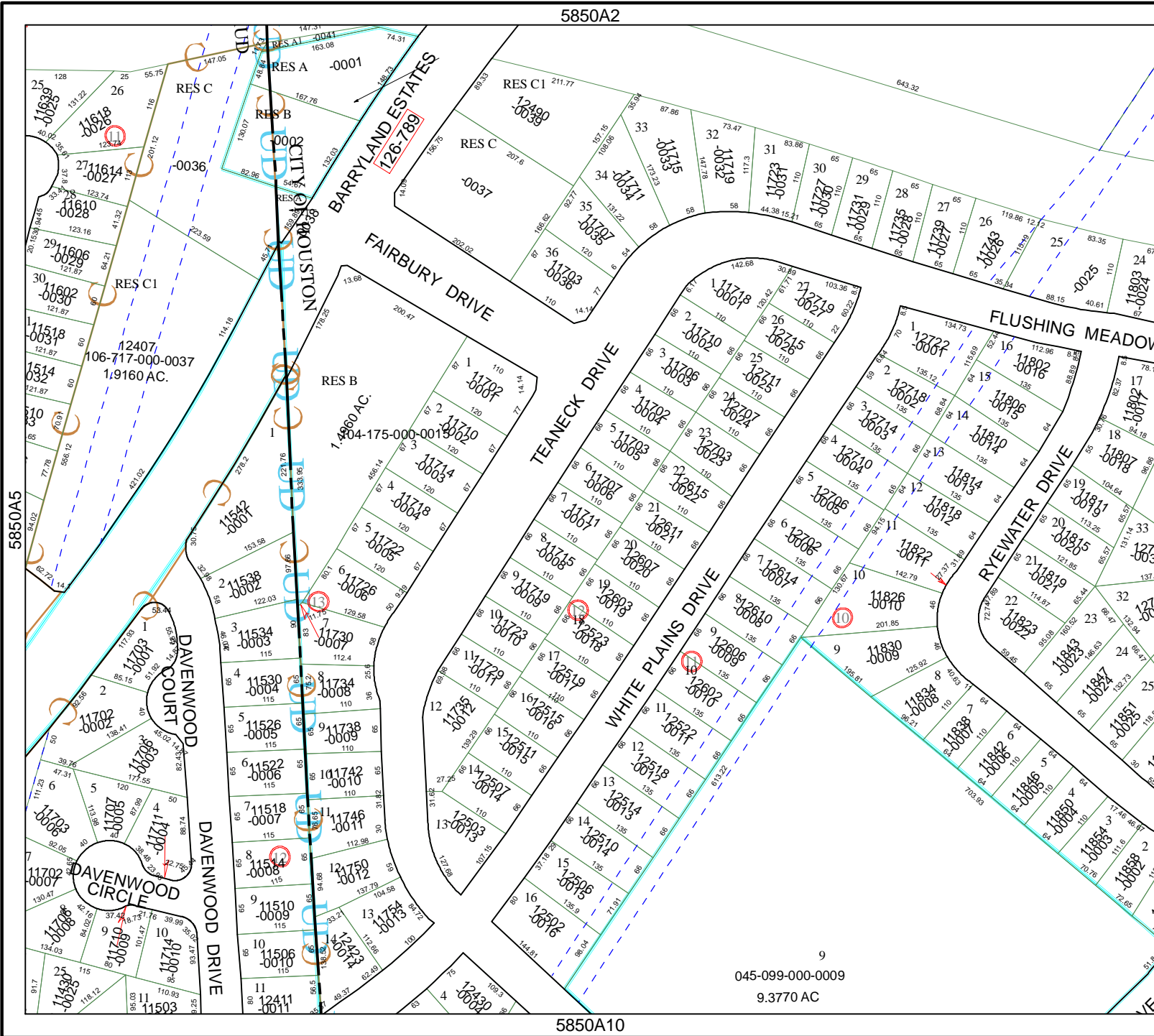
Geospatial or map data maintained by the Harris County Appraisal District is for informational purposes and may not be prepared for or be suitable for legal, engineering, or surveying purposes. It does not represent an on-the-ground survey and only represents the approximate location of property boundaries.

MAP LOCATION



FACET 5850A

1	2	3	4
5	6	7	8
9	10	11	12



9
 045-099-000-0009
 9.3770 AC

5850A10

5850A5

5850A2

5850A7