

5849A3

5849A6

Harris County Appraisal District



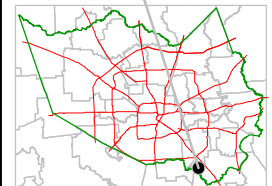
0 100 200

PUBLICATION DATE:
8/15/2011

Geospatial or map data maintained by the Harris County Appraisal District is for informational purposes and may **not** have been prepared for or be suitable for legal, engineering, or surveying purposes. It does **not** represent an on-the-ground survey and only represents the approximate location of property boundaries.



MAP LOCATION



FACET 5849A

1	2	3	4
5	6	7	8
9	10	11	12

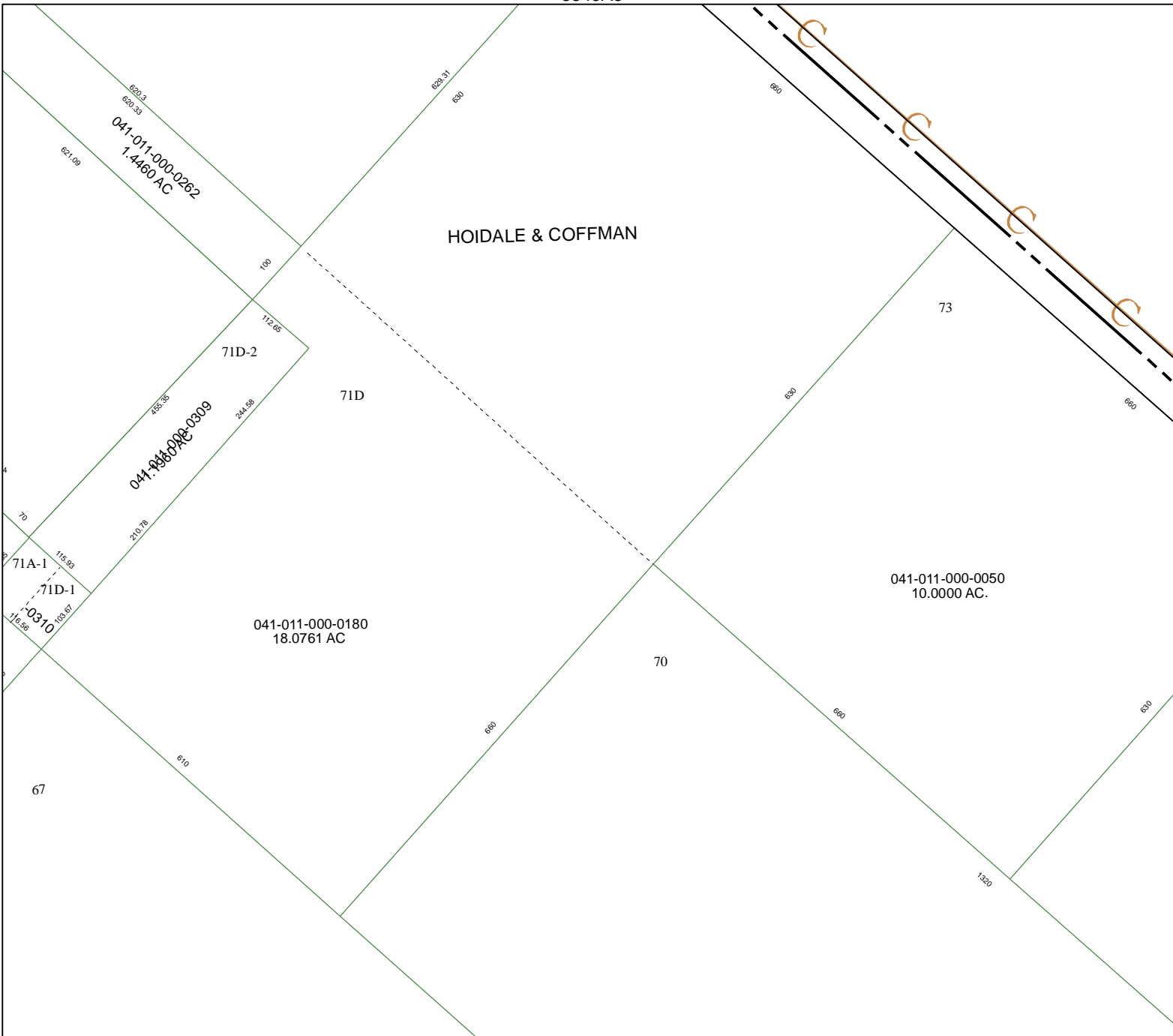
HOIDALE & COFFMAN

041-011-000-0050
10.0000 AC.

041-011-000-0180
18.0761 AC

041-011-000-0262
1.4460 AC

041-011-000-0309



5849A11