

5771D5

5770B1

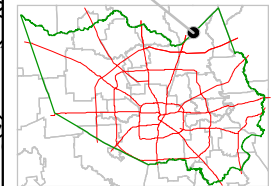
# Harris County Appraisal District



0 100 200  
PUBLICATION DATE:  
9/1/2011

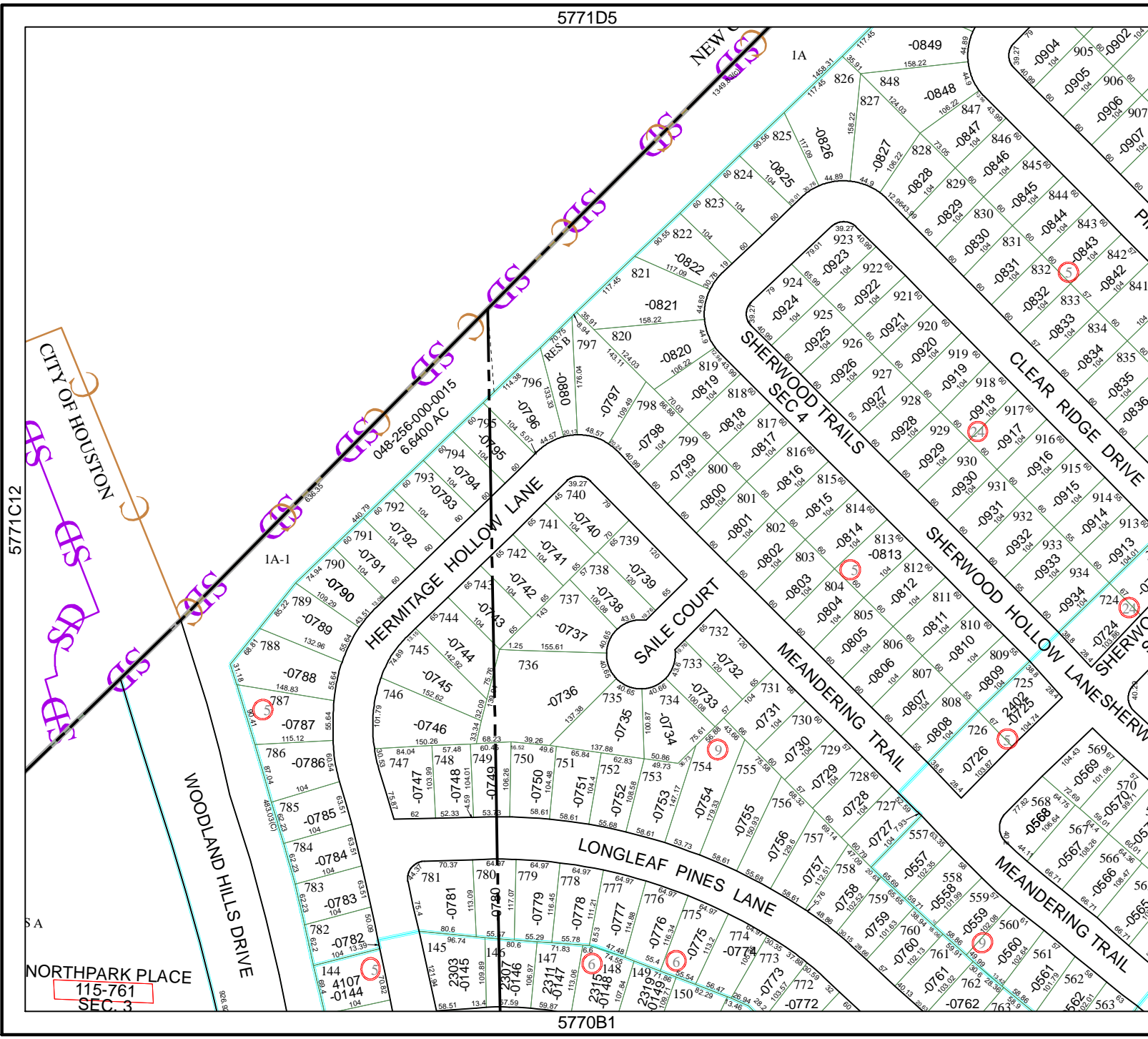
Geospatial or map data maintained by the Harris County Appraisal District is for informational purposes and may not have been prepared for or be suitable for legal, engineering, or surveying purposes. It does not represent an on-the-ground survey and only represents the approximate location of property boundaries.

MAP LOCATION



## FACET 5771D

1	2	3	4
5	6	7	8
9	10	11	12



CITY OF HOUSTON

WOODLAND HILLS DRIVE

NORTHSPARK PLACE  
SEC. 3  
115-761

5771C12

5771D10