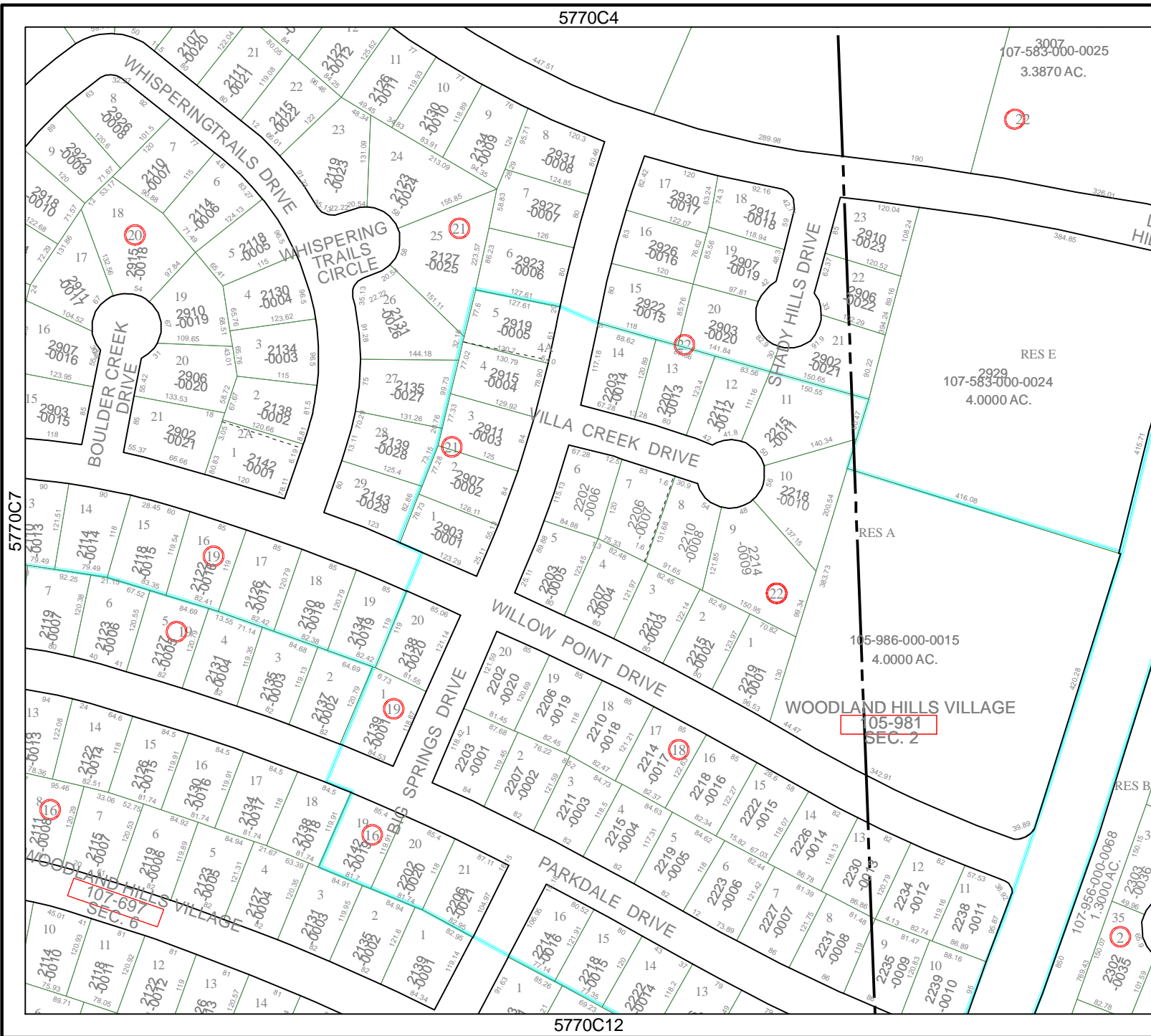


5770C4



5770C7

5770C12

Harris County Appraisal District

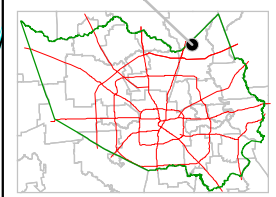


0 100 200
 PUBLICATION DATE:
 8/1/2011

Geospatial or map data maintained by the Harris County Appraisal District is for informational purposes and may not have been prepared for or be suitable for legal, engineering, or surveying purposes. It does not represent an on-the-ground survey and only represents the approximate location of property boundaries.



MAP LOCATION



FACET 5770C

1	2	3	4
5	6	7	8
9	10	11	12

5770D5

3007

107-583-000-0025
3.3870 AC.



RES E
107-583-000-0024
4.0000 AC.

105-986-000-0015
4.0000 AC.

WOODLAND HILLS VILLAGE
105-981
SEC. 2

RES B

107-956-000-0068
1.3000 AC.



2302-0035