

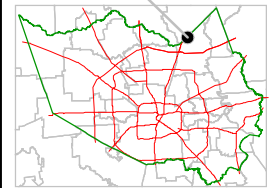
Harris County Appraisal District



0 100 200
 PUBLICATION DATE:
 9/5/2011

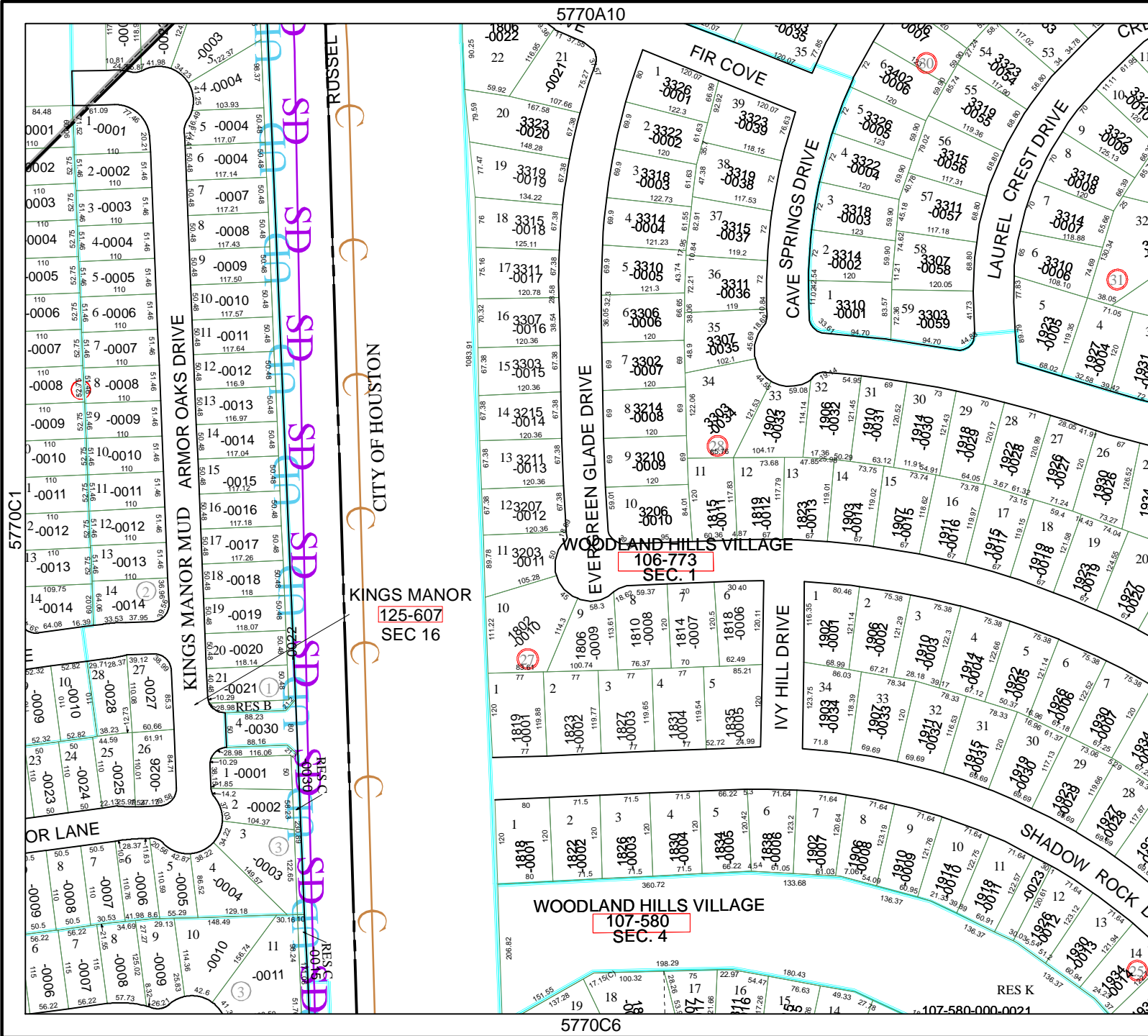
Geospatial or map data maintained by the Harris County Appraisal District is for informational purposes and may not be suitable for legal, engineering, or surveying purposes. It does not represent an on-the-ground survey and only represents the approximate location of property boundaries.

MAP LOCATION



FACET 5770C

1	2	3	4
5	6	7	8
9	10	11	12



5770A10

5770C1

KINGS MANOR
 125-607
 SEC. 16

WOODLAND HILLS VILLAGE
 106-773
 SEC. 1

WOODLAND HILLS VILLAGE
 107-580
 SEC. 4

5770C6

