

5771C12

CITY OF HOUSTON

HUMBLE I.S.D.
NEW CANEY I.S.D.

115-761-000-0001
10.6750 AC.

Harris County Appraisal District



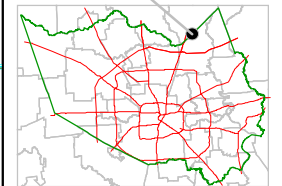
0 100 200

PUBLICATION DATE:
7/20/2011

Geospatial or map data maintained by the Harris County Appraisal District is for informational purposes and may not have been prepared for or be suitable for legal, engineering, or surveying purposes. It does not represent an on-the-ground survey and only represents the approximate location of property boundaries.



MAP LOCATION



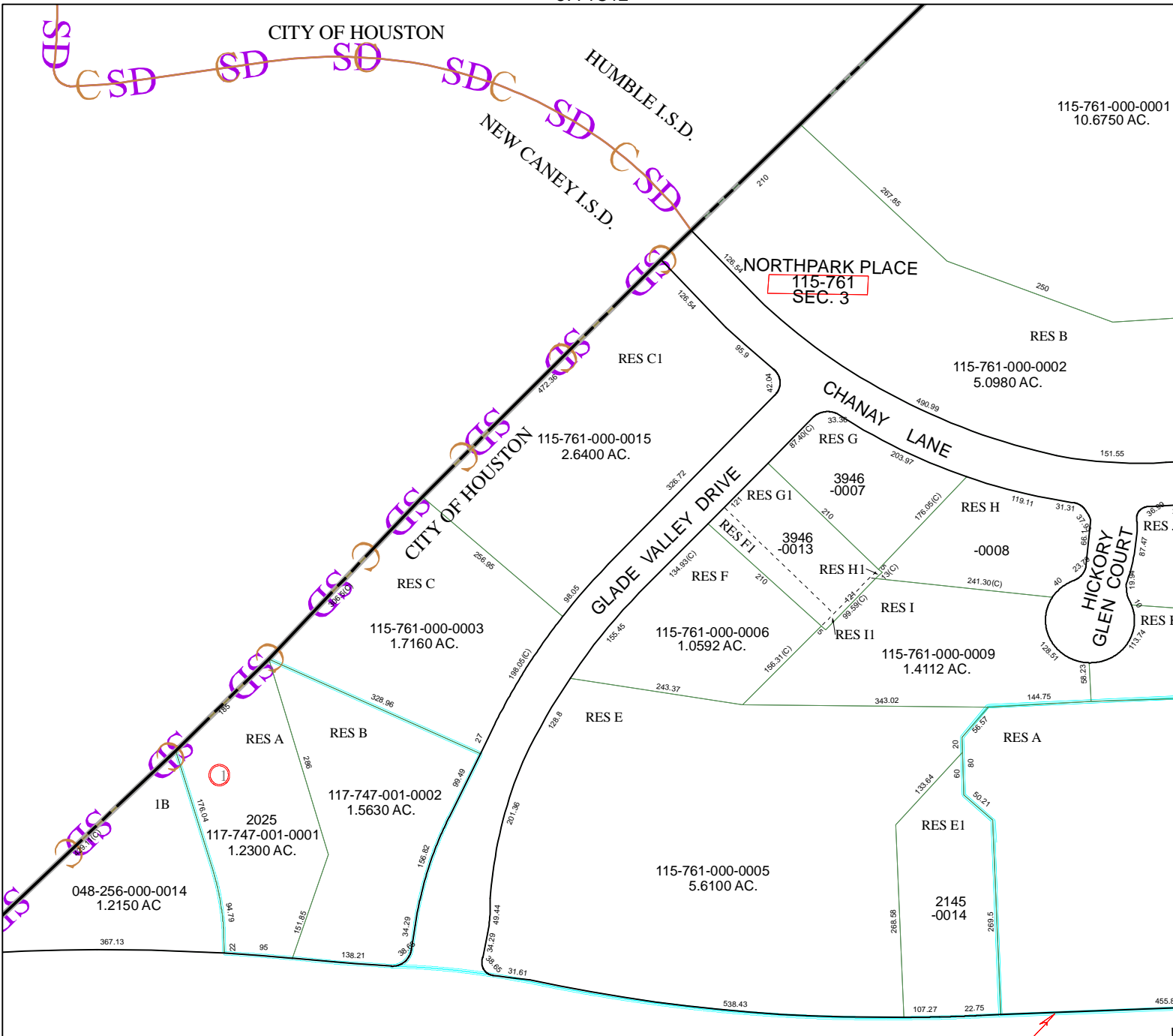
FACET 5770A

1	2	3	4
5	6	7	8
9	10	11	12

5770A8

5770A3

5770B1



048-256-000-0014
1.2150 AC

2025
117-747-001-0001
1.2300 AC.

117-747-001-0002
1.5630 AC.

115-761-000-0003
1.7160 AC.

115-761-000-0015
2.6400 AC.

115-761-000-0006
1.0592 AC.

115-761-000-0005
5.6100 AC.

115-761
SEC. 3

115-761-000-0002
5.0980 AC.

115-761-000-0009
1.4112 AC.

2145
-0014