

Harris County Appraisal District

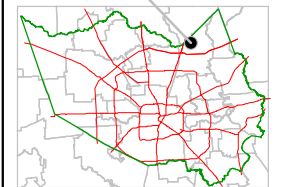


0 100 200
PUBLICATION DATE:
 9/5/2011

Geospatial or map data maintained by the Harris County Appraisal District is for informational purposes and may not have been prepared for or be suitable for legal, engineering, or surveying purposes. It does not represent an on-the-ground survey and only represents the approximate location of property boundaries.

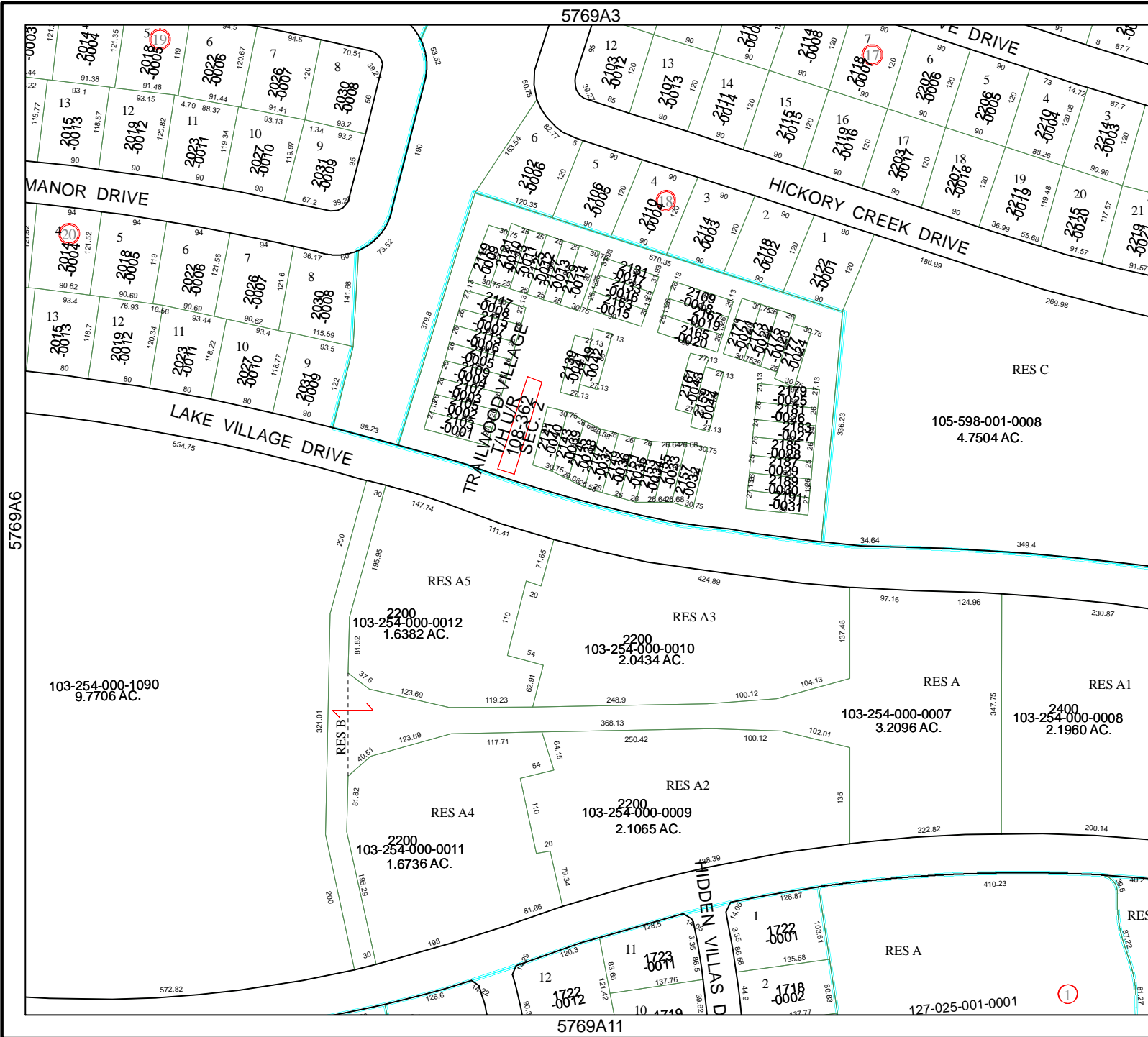


MAP LOCATION



FACET 5769A

1	2	3	4
5	6	7	8
9	10	11	12



5769A6

5769A3

5769A11

5769A8

105-598-001-0008
 4.7504 AC.

103-254-000-1090
 9.7706 AC.

2200
 103-254-000-0012
 1.6382 AC.

2200
 103-254-000-0010
 2.0434 AC.

103-254-000-0007
 3.2096 AC.

2400
 103-254-000-0008
 2.1960 AC.

2200
 103-254-000-0011
 1.6736 AC.

2200
 103-254-000-0009
 2.1065 AC.

127-025-001-0001