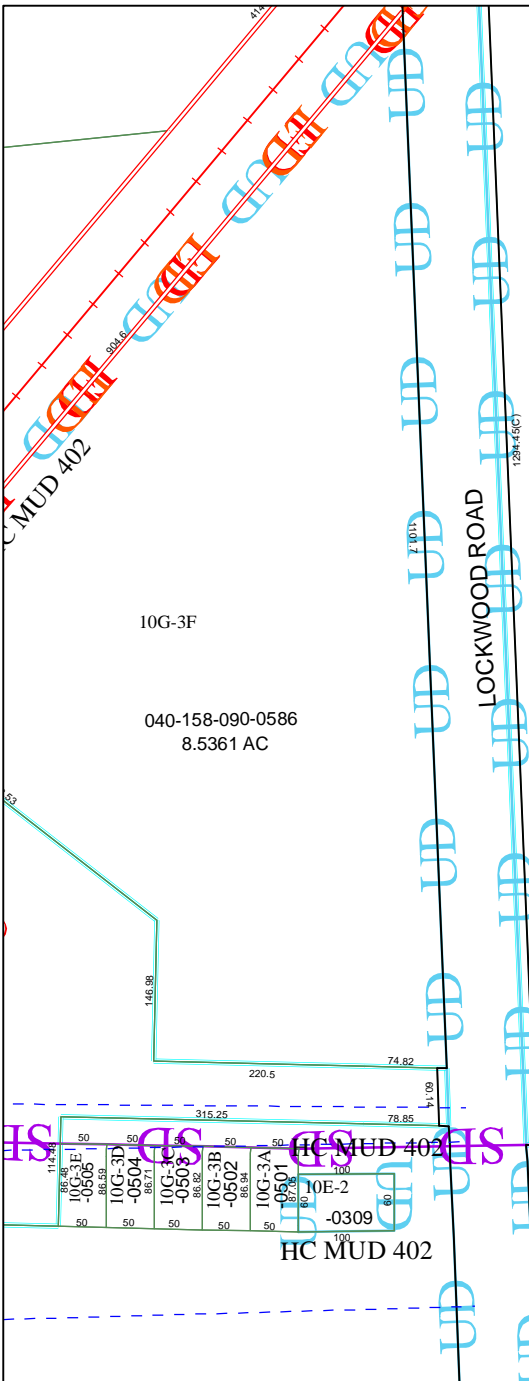


5764B2

HJMBLE ISD HIGH SCHOOL NO 06  
130-773

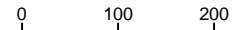
14000  
130-773-001-0001  
66.9042 AC

5764B5



5764B10

# Harris County Appraisal District

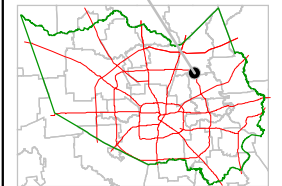


PUBLICATION DATE:  
12/15/2011

Geospatial or map data maintained by the Harris County Appraisal District is for informational purposes and may **not** have been prepared for or be suitable for legal, engineering, or surveying purposes. It does **not** represent an on-the-ground survey and only represents the approximate location of property boundaries.



### MAP LOCATION



## FACET 5764B

1	2	3	4
5	6	7	8
9	10	11	12

①

5764B7