

5763B11

124-390-001-0002
12.0000 AC

AL SCHOOL OF GREATER HOUSTON
124-390



124-390-001-0003
2.4995 AC

5763D2

5763D7

Harris County Appraisal District



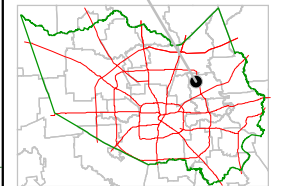
0 100 200

PUBLICATION DATE:
8/15/2011

Geospatial or map data maintained by the Harris County Appraisal District is for informational purposes and may not have been prepared for or be suitable for legal, engineering, or surveying purposes. It does not represent an on-the-ground survey and only represents the approximate location of property boundaries.

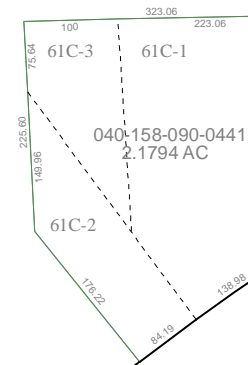


MAP LOCATION



FACET 5763D

1	2	3	4
5	6	7	8
9	10	11	12



5763D4