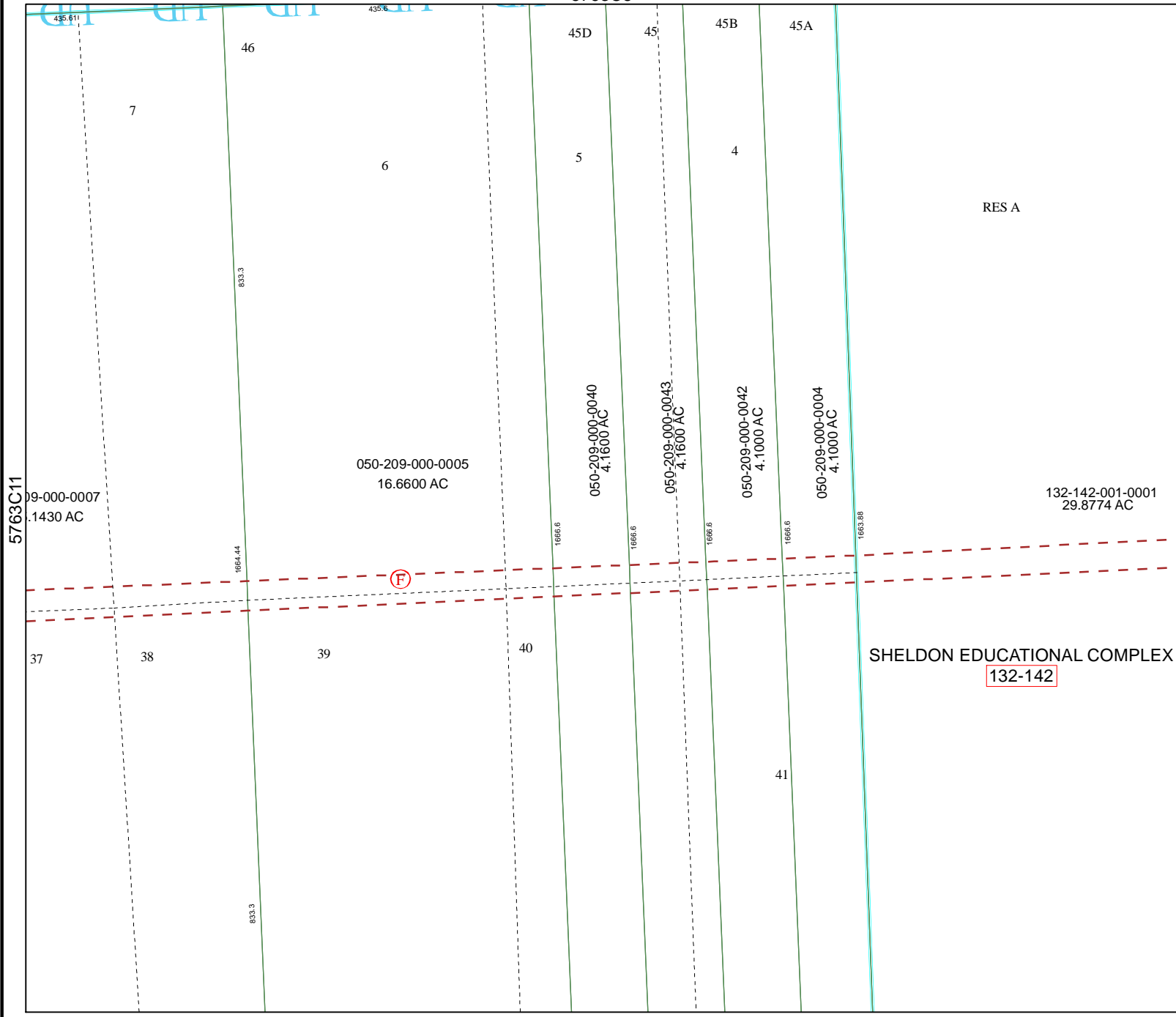


5763C8



RES A

# Harris County Appraisal District

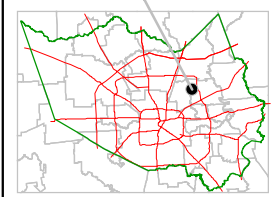


PUBLICATION DATE:  
1/4/2012

Geospatial or map data maintained by the Harris County Appraisal District is for informational purposes and may **not** have been prepared for or be suitable for legal, engineering, or surveying purposes. It does **not** represent an on-the-ground survey and only represents the approximate location of property boundaries.



### MAP LOCATION



SHELDON EDUCATIONAL COMPLEX  
132-142

# FACET 5763C

1	2	3	4
5	6	7	8
9	10	11	12

5762A4

5763C11

5763D9