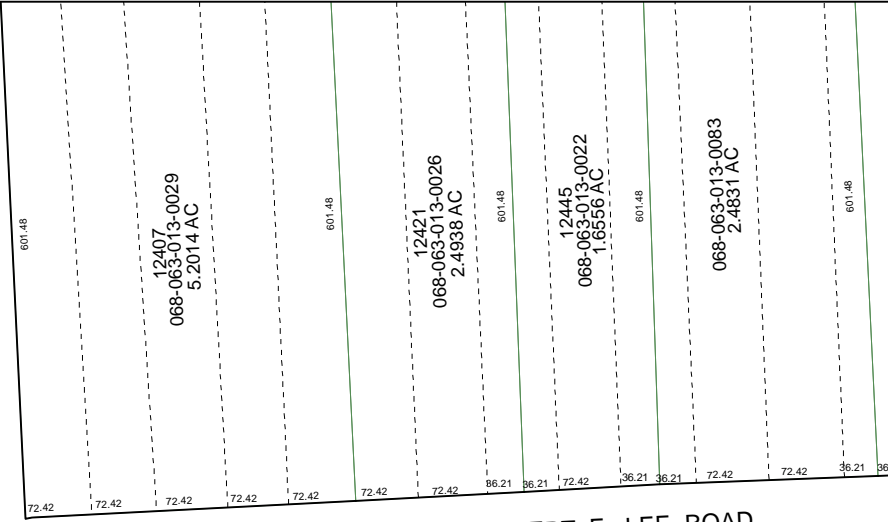
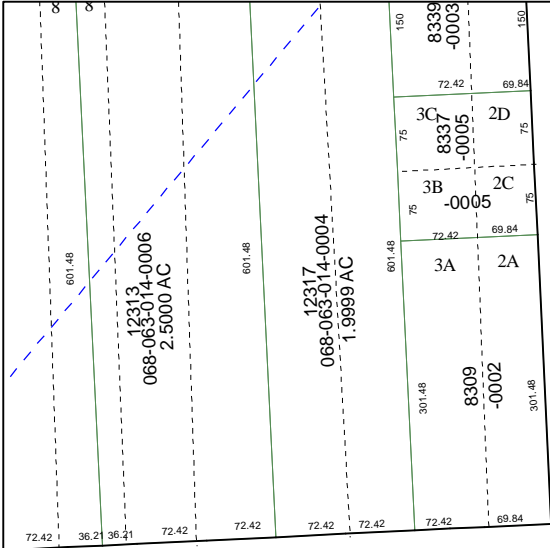
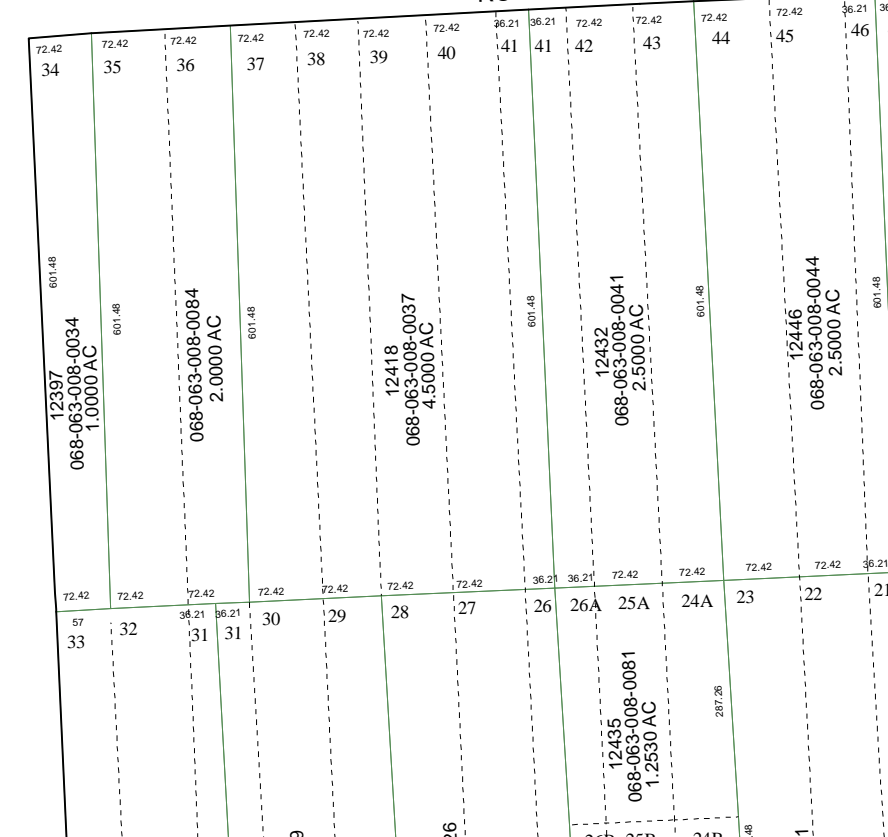
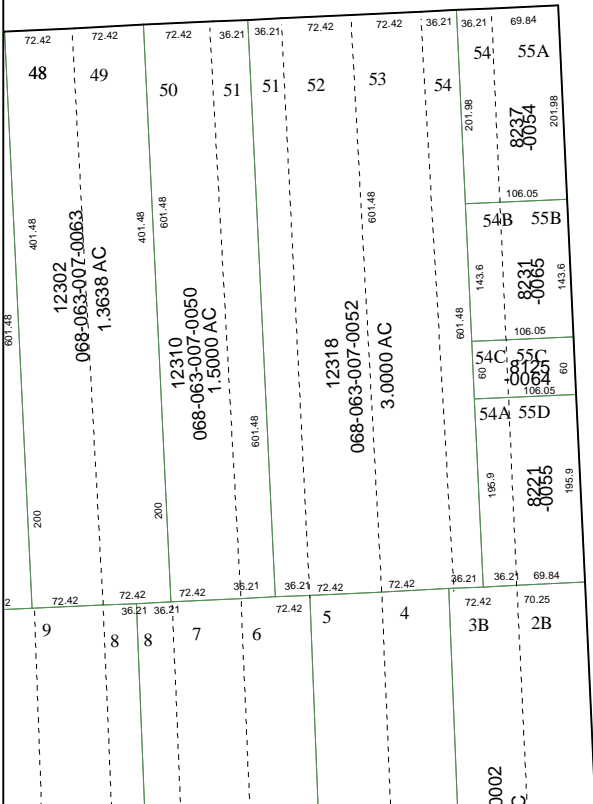


5761D2

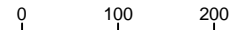


5761D10



ROBERT E. LEE ROAD

Harris County Appraisal District

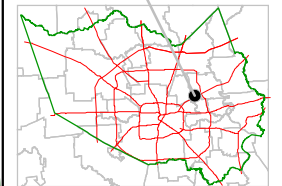


PUBLICATION DATE: 8/15/2011

Geospatial or map data maintained by the Harris County Appraisal District is for informational purposes and may not be prepared for or be suitable for legal, engineering, or surveying purposes. It does not represent an on-the-ground survey and only represents the approximate location of property boundaries.



MAP LOCATION



FACET 5761D

1	2	3	4
5	6	7	8
9	10	11	12

5761D5

5761D7