

5761C11

26

043-212-001-0215
23.2000 AC.

1

1A
043-212-001-0005
1.0000 AC.

710

575

2B

043-212-001-0333
3.1300 AC.

3

7601
043-212-001-0020
4.1000 AC.

4

7521
043-212-001-0025
6.4800 AC.

5760A7

39C
39B 231.85
-0276
231.85
32A 174.75
7802
-0321
174.75
40A
134.65
71.12
40A-1
40
04
148.43
33
33
22
043
5760A4
21
20
19A
140
1
-0001
NELSON
10 140
422
010
126

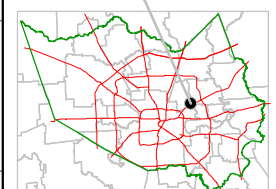
Harris County Appraisal District



0 100 200
PUBLICATION DATE:
12/1/2011

Geospatial or map data maintained by the Harris County Appraisal District is for informational purposes and may not have been prepared for or be suitable for legal, engineering, or surveying purposes. It does not represent an on-the-ground survey and only represents the approximate location of property boundaries.

MAP LOCATION



FACET 5760A

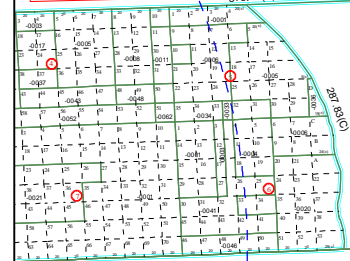
1	2	3	4
5	6	7	8
9	10	11	12

5760A2

CITY OF HOUSTON
HC ESD 2 (EMS)

196-022-0004
10.1785 AC.

WARREN & COBB
063-109



J.B. WARREN & J.M. COBB U/R

HC ESD 60 (FIRE)

