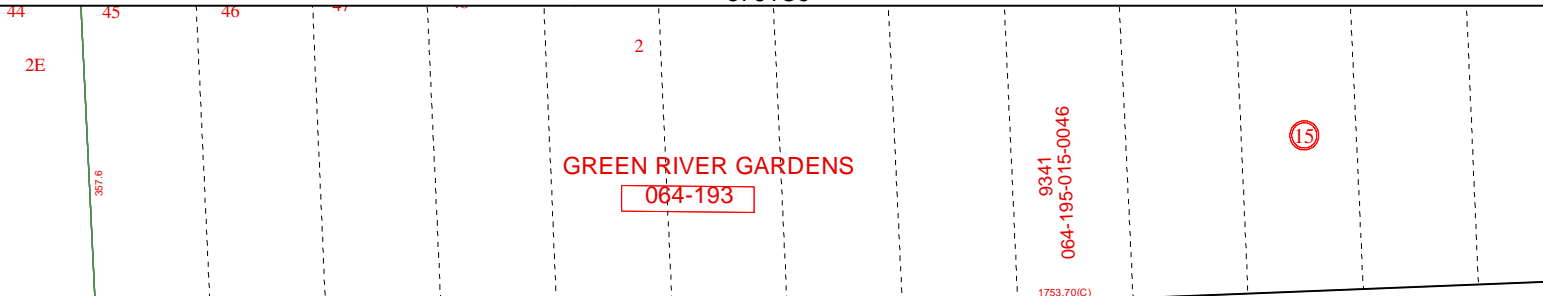


5761C9



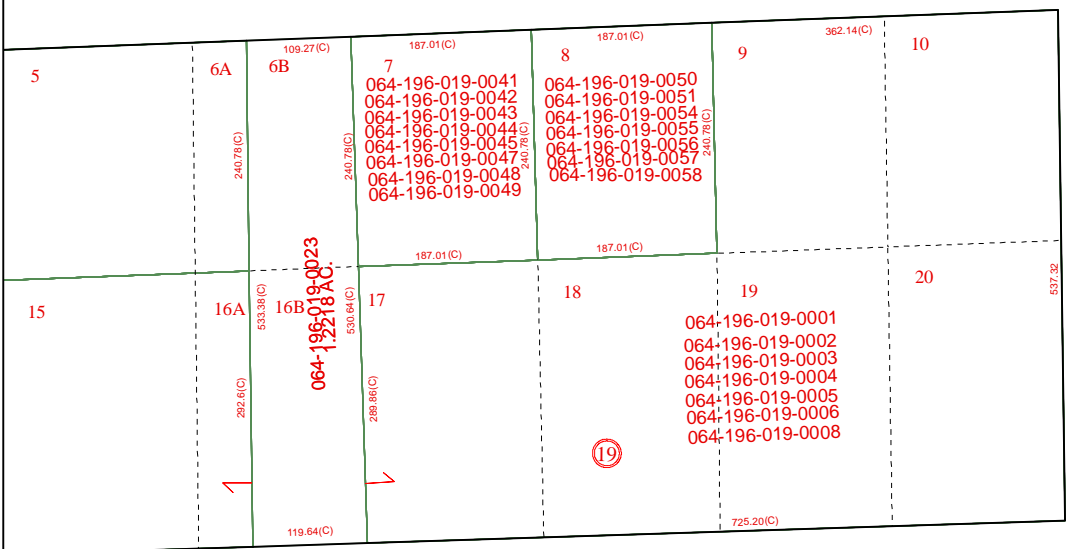
GREEN RIVER GARDENS

064-193

9341  
064-195-015-0046

15

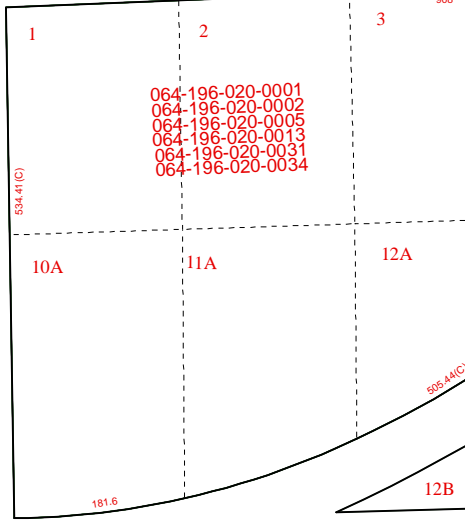
GREEN RIVER DRIVE



064-196-019-0023  
1.2218 AC.

064-196-019-0001  
064-196-019-0002  
064-196-019-0003  
064-196-019-0004  
064-196-019-0005  
064-196-019-0006  
064-196-019-0008

19

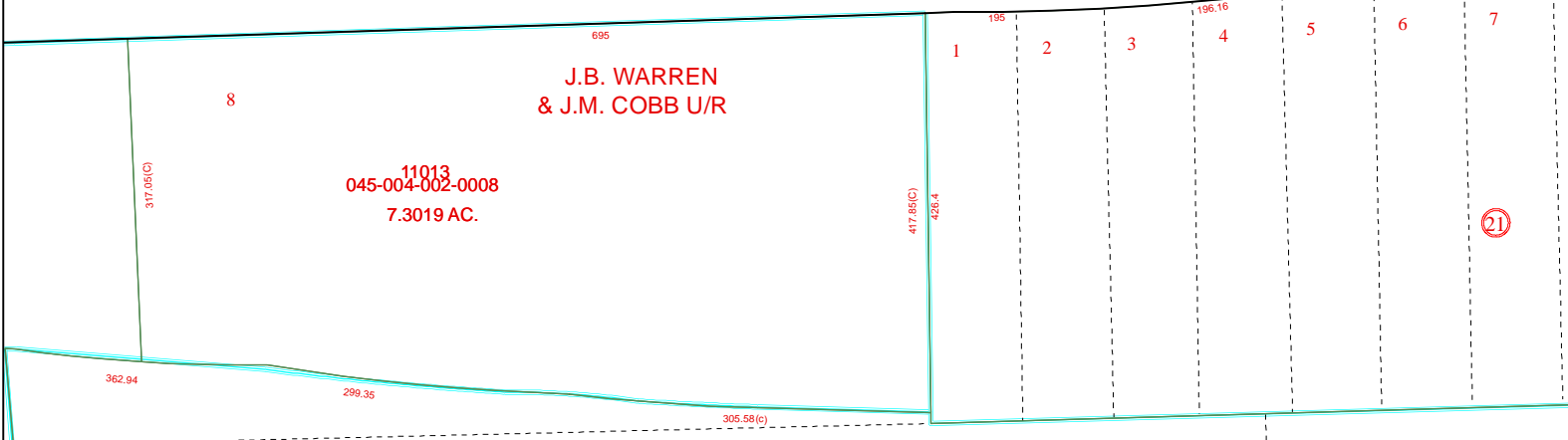


064-196-020-0001  
064-196-020-0002  
064-196-020-0005  
064-196-020-0013  
064-196-020-0031  
064-196-020-0034

VERDE ROAD

5660B4

LEY ROAD



J.B. WARREN  
& J.M. COBB U/R

11013  
045-004-002-0008  
7.3019 AC.

21

5760A5

# Harris County Appraisal District

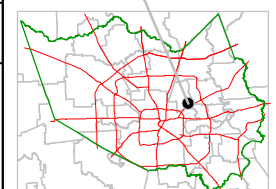


0 100 200  
PUBLICATION DATE:  
11/23/2011

Geospatial or map data maintained by the Harris County Appraisal District is for informational purposes and may not have been prepared for or be suitable for legal, engineering, or surveying purposes. It does not represent an on-the-ground survey and only represents the approximate location of property boundaries.



MAP LOCATION



## FACET 5760A

1	2	3	4
5	6	7	8
9	10	11	12