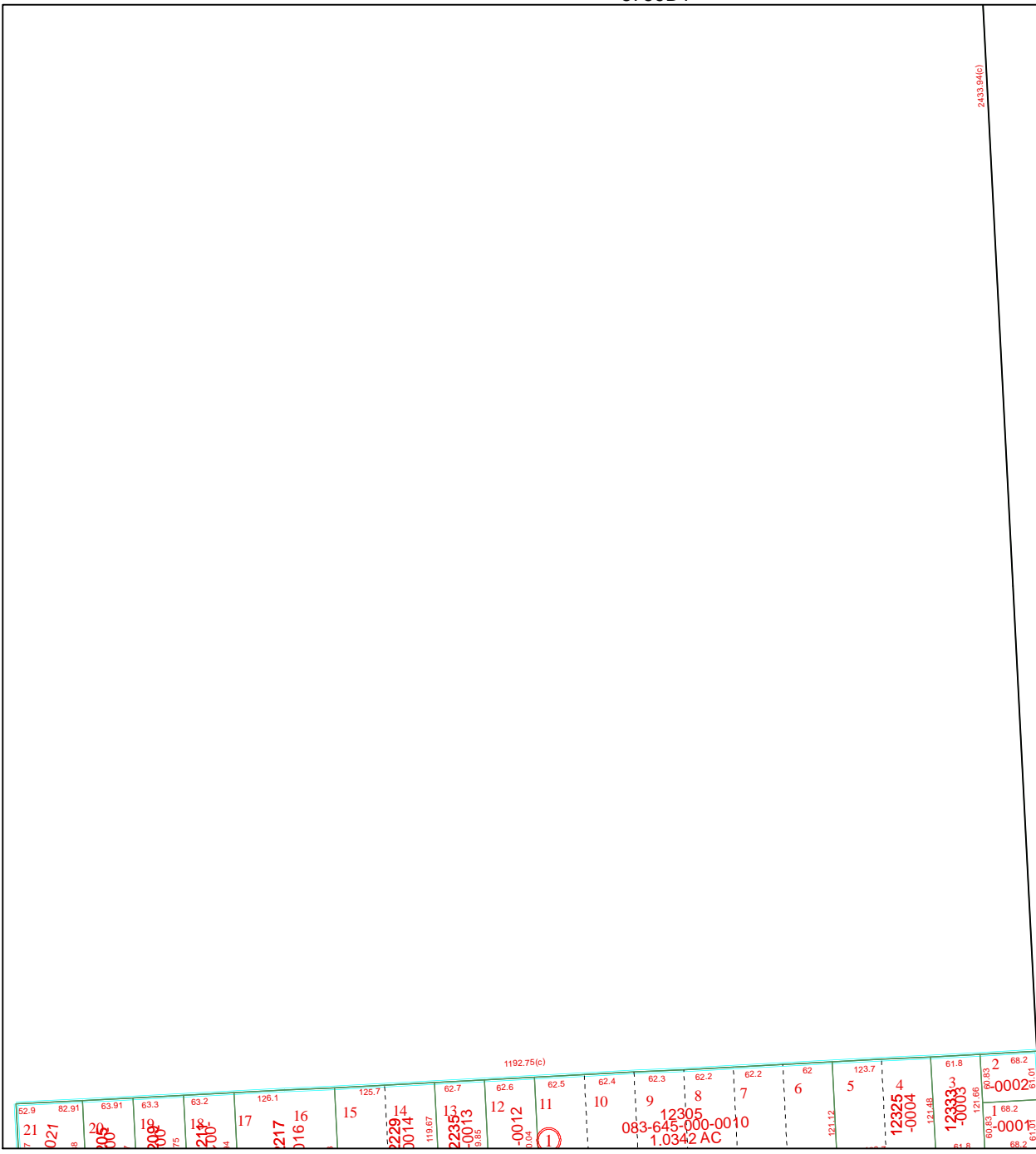


5759D1

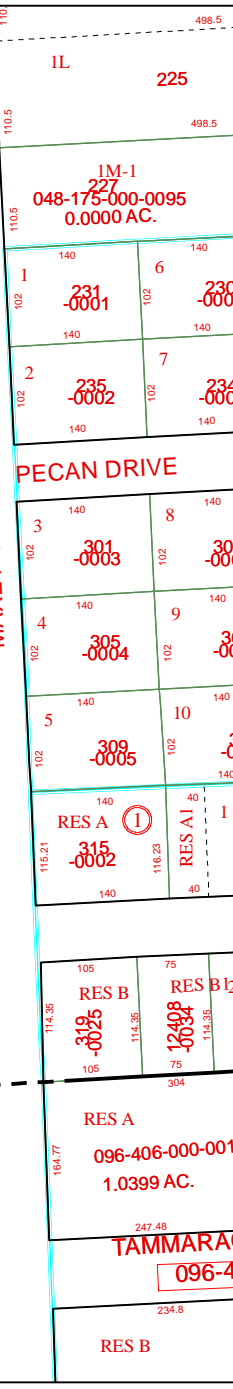
5759C8



5759D9

F.M. 526

MAXEY ROAD



# Harris County Appraisal District

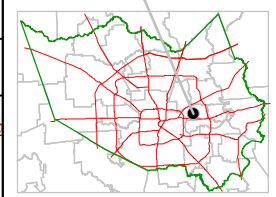


0 100 200  
 PUBLICATION DATE:  
 12/27/2011

Geospatial or map data maintained by the Harris County Appraisal District is for informational purposes and may not have been prepared for or be suitable for legal, engineering, or surveying purposes. It does not represent an on-the-ground survey and only represents the approximate location of property boundaries.



MAP LOCATION



## FACET 5759D

1	2	3	4
5	6	7	8
9	10	11	12