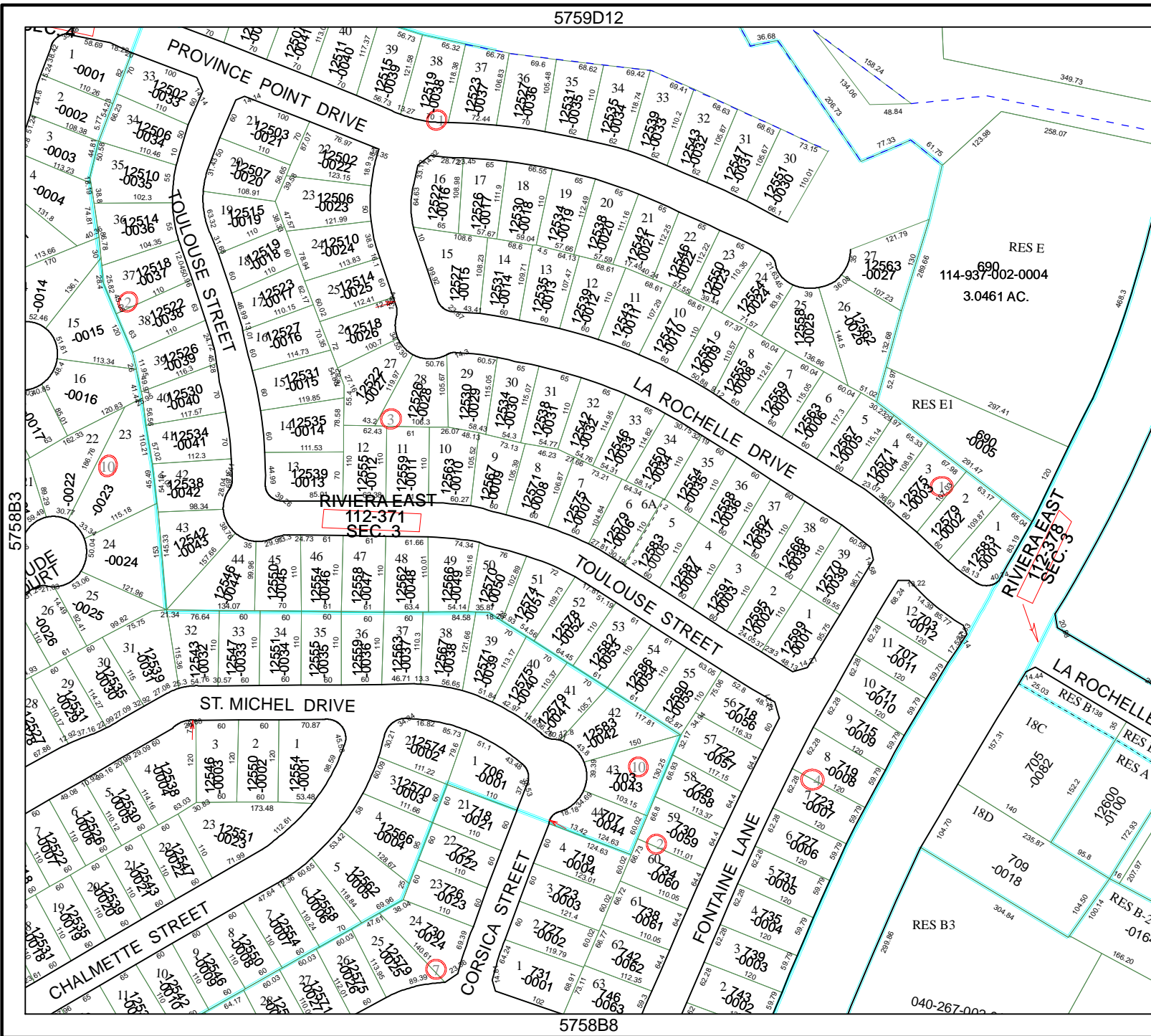


5759D12



5758B3

5758B8

Harris County Appraisal District

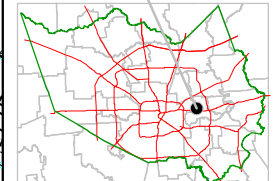


0 100 200
 PUBLICATION DATE:
 8/15/2011

Geospatial or map data maintained by the Harris County Appraisal District is for informational purposes and may not have been prepared for or be suitable for legal, engineering, or surveying purposes. It does not represent an on-the-ground survey and only represents the approximate location of property boundaries.



MAP LOCATION



FACET 5758B

1	2	3	4
5	6	7	8
9	10	11	12

5858A1

RES E
 114-937-002-0004
 3.0461 AC.

RES E1
 690-0006

RES B138
 18C
 705-0092
 18D
 140
 236.97
 96.8
 12600-0100
 172.93
 709-0018
 304.84
 104.50
 1091.14
 166.20
 RES B-2
 -0164

RES B3
 040-267-0002