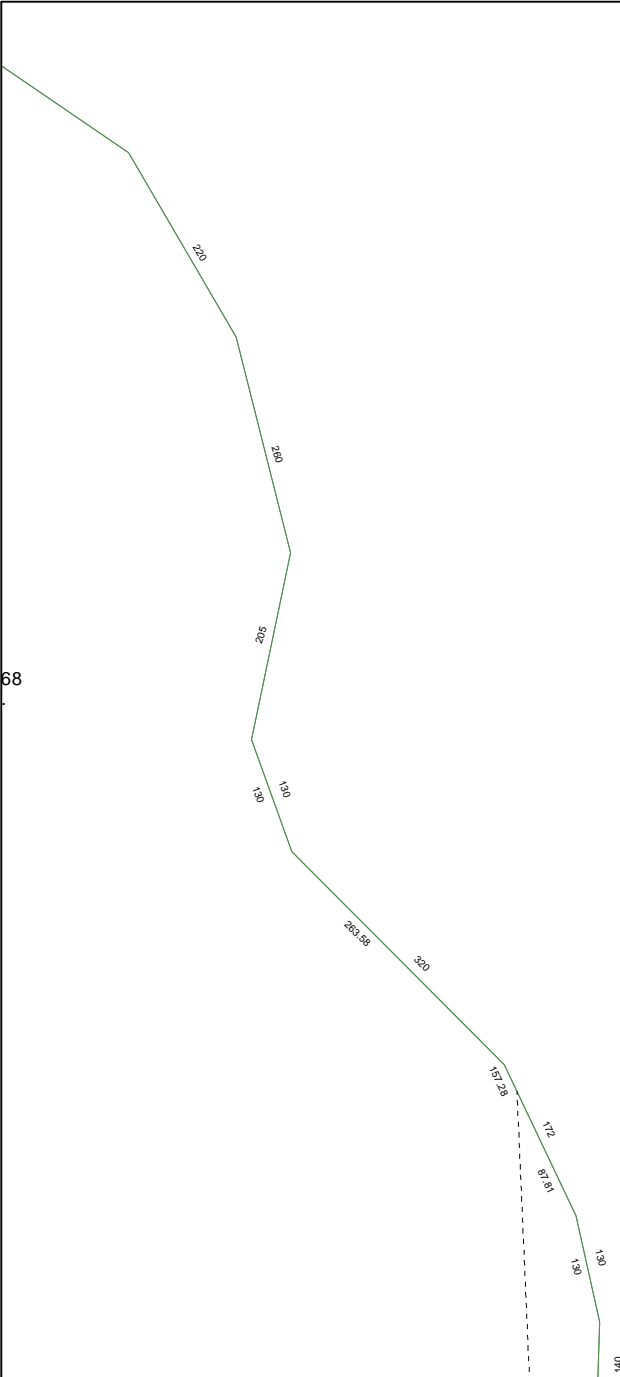


5757D5

5757C12



35E

041-029-004-0165

102.1260 AC.

5756B1

Harris County Appraisal District



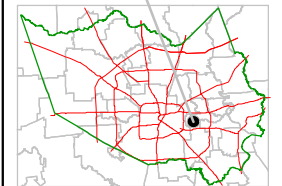
PUBLICATION DATE:
9/1/2011

Geospatial or map data maintained by the Harris County Appraisal District is for informational purposes and may **not** have been prepared for or be suitable for legal, engineering, or surveying purposes. It does **not** represent an on-the-ground survey and only represents the approximate location of property boundaries.



5757D10

MAP LOCATION



FACET 5757D

1	2	3	4
5	6	7	8
9	10	11	12