

5758D9

5757B5

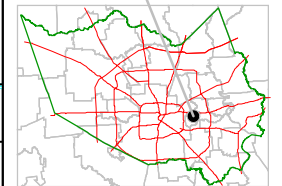
Harris County Appraisal District



0 100 200
PUBLICATION DATE:
8/15/2011

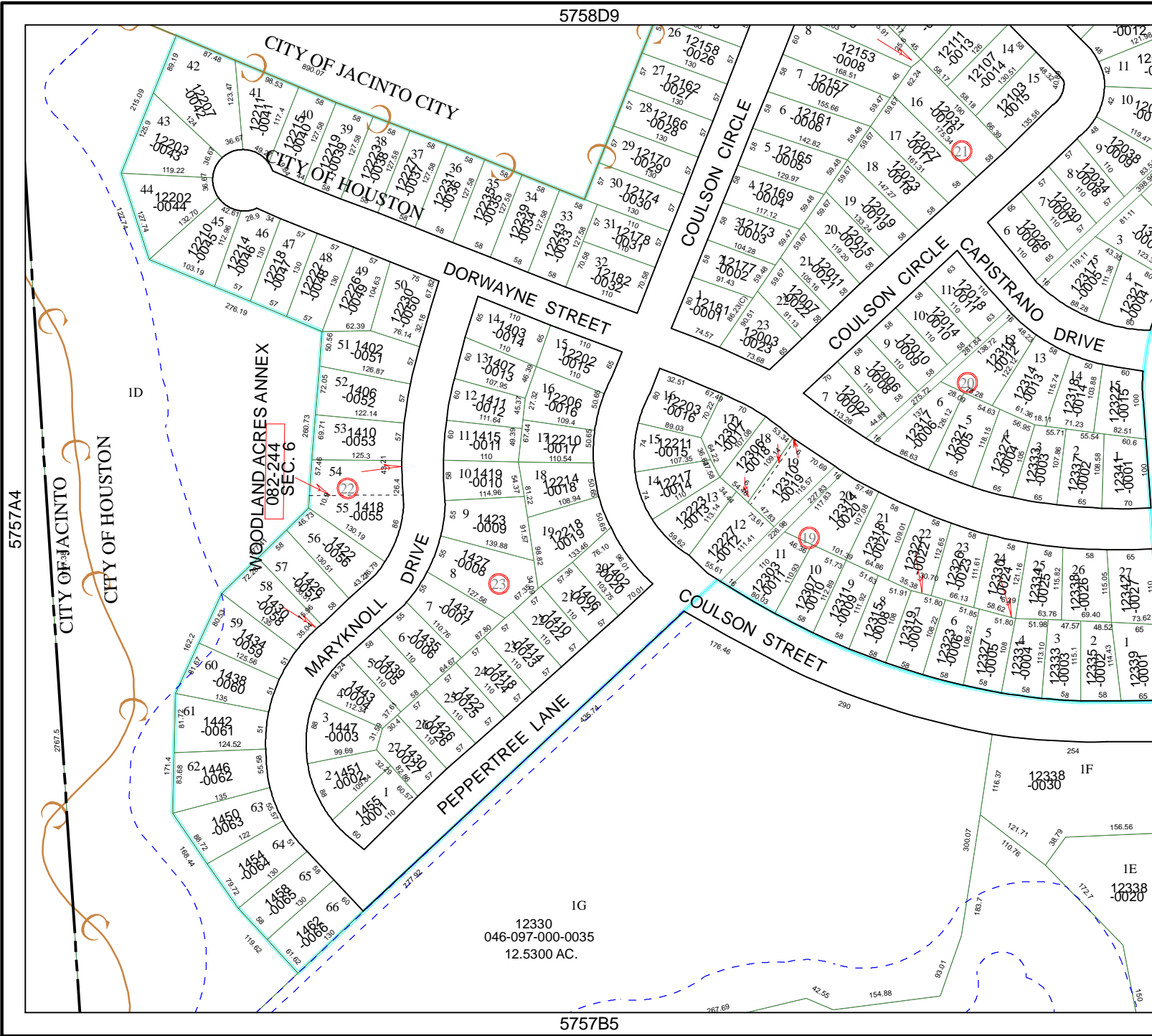
Geospatial or map data maintained by the Harris County Appraisal District is for informational purposes and may not have been prepared for or be suitable for legal, engineering, or surveying purposes. It does not represent an on-the-ground survey and only represents the approximate location of property boundaries.

MAP LOCATION



FACET 5757B

1	2	3	4
5	6	7	8
9	10	11	12



IG
12330
046-097-000-0035
12.5300 AC.

5757B2

5757A4

CITY OF JACINTO
CITY OF HOUSTON

ID

WOODLAND ACRES ANNEX
082-244
SEC. 6

MARYKNOLL DRIVE

PEPERTREE LANE

DORWAYNE STREET

COULSON STREET

COULSON CIRCLE

COULSON CIRCLE
CAPISTRANO DRIVE

CITY OF JACINTO CITY
CITY OF HOUSTON

2787.5

215.09

125.9

119.22

132.70

103.19

122.10

122.4

122.18

122.22

122.2

122.3

122.3

122.3

122.3

122.3

122.3

122.3

122.3

122.3

122.3

122.3

122.3

122.3

122.3

122.3

122.3

122.3

122.3

122.3

122.3

122.3

122.3

122.3

122.3

122.3

122.3

122.3

122.3

122.3

122.3

122.3

122.3

122.3

122.3

122.202

122.202

122.202

122.202

122.202

122.202

122.202

122.202

122.202

122.202

122.202

122.202

122.202

122.202

122.202

122.202

122.202

122.202

122.202

122.202

122.202

122.202

122.202

122.202

122.202

122.202

122.202

122.202

122.202

122.202

122.202

122.202

122.202

122.202

122.202

122.202

122.202

122.202

122.202

122.202

122.202

122.202

122.202

122.202

122.202

122.202

122.202

122.202

122.202

122.202

122.202

122.202

122.202

122.202

122.202

122.202

122.202

122.202

122.202

122.202

122.202

122.202

122.202

122.202

122.202

122.202

122.202

122.202

122.202

122.202

122.202

122.202

122.202

122.202

122.202

122.202

122.202

122.202

122.202

122.202

122.202

122.202

122.202

122.202

122.202

122.202

122.202

122.202

122.202

122.202

122.202

122.202

122.202

122.202

122.202

122.202

122.202

122.202

122.202

122.202

122.202

122.202

122.202

122.202

122.202

122.202

122.202

122.202

122.202

122.202

122.202

122.202

122.202

122.202

122.202

122.202

122.202

122.202

122.202

122.202

122.202

122.202

122.202

122.202

122.202

122.202

122.202

122.202

122.202

122.202

122.202

122.202

122.202

122.202

122.202

122.202

122.202

122.202

122.202

122.202

122.202

122.202

122.202

122.202

122.202

122.202

122.202

122.202

122.202

122.202

122.202

122.202

122.202

122.202

122.202

122.202

122.202

122.202

122.202

122.202

122.202

122.202

122.202

122.202

122.202

122.202

122.202

122.202

122.202

122.202

122.202

122.202

122.202

122.202

122.202

122.202

122.202

122.202

122.202

122.202

122.202

122.202

122.202

122.202

122.202

122.202

122.202

122.202

122.202

122.202

122.202

122.202

122.202

122.202

122.202

122.202

122.202

122.202

122.202

122.202

122.202

122.202

122.202

122.202

122.202

122.202

122.202

122.202

122.202

122.202

122.202

122.202

122.202

122.202

122.202

122.202

122.202

122.202

122.202

122.202

122.202

122.202

122.202

122.202

122.202

122.202