

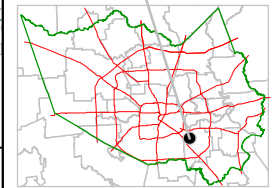
Harris County Appraisal District



0 100 200
PUBLICATION DATE:
 8/15/2011

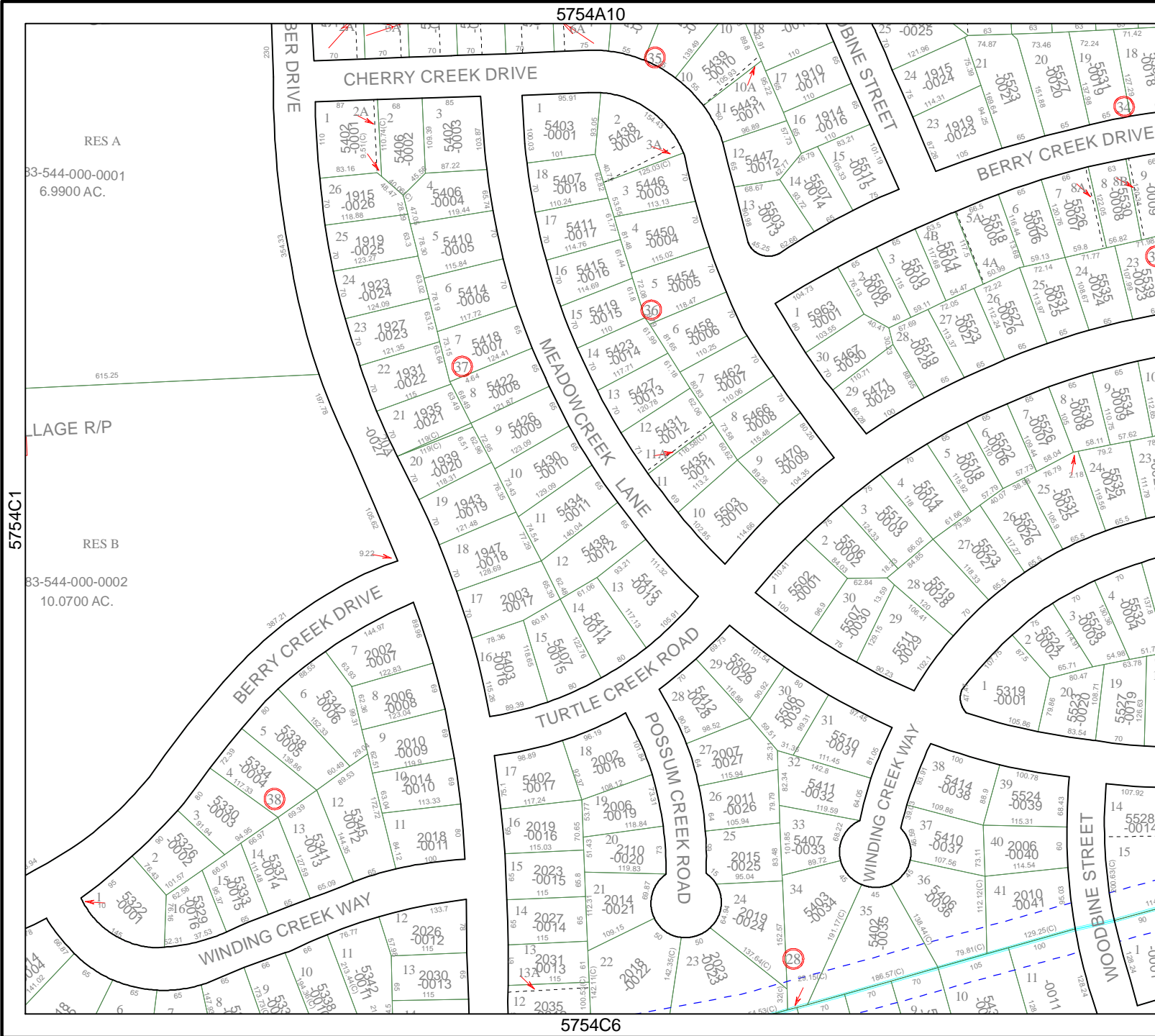
Geospatial or map data maintained by the Harris County Appraisal District is for informational purposes and may not be suitable for legal, engineering, or surveying purposes. It does not represent an on-the-ground survey and only represents the approximate location of property boundaries.

MAP LOCATION



FACET 5754C

| | | | |
|---|----|----|----|
| 1 | 2 | 3 | 4 |
| 5 | 6 | 7 | 8 |
| 9 | 10 | 11 | 12 |



5754A10

5754C6

RES A
 33-544-000-0001
 6.9900 AC.

LAGE R/P
 RES B
 33-544-000-0002
 10.0700 AC.

5754C1

5754C3

