

Harris County Appraisal District

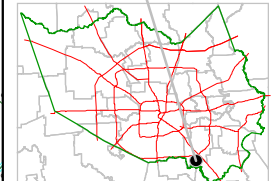


0 100 200
PUBLICATION DATE:
 8/15/2011

Geospatial or map data maintained by the Harris County Appraisal District is for informational purposes and may not have been prepared for or be suitable for legal, engineering, or surveying purposes. It does not represent an on-the-ground survey and only represents the approximate location of property boundaries.

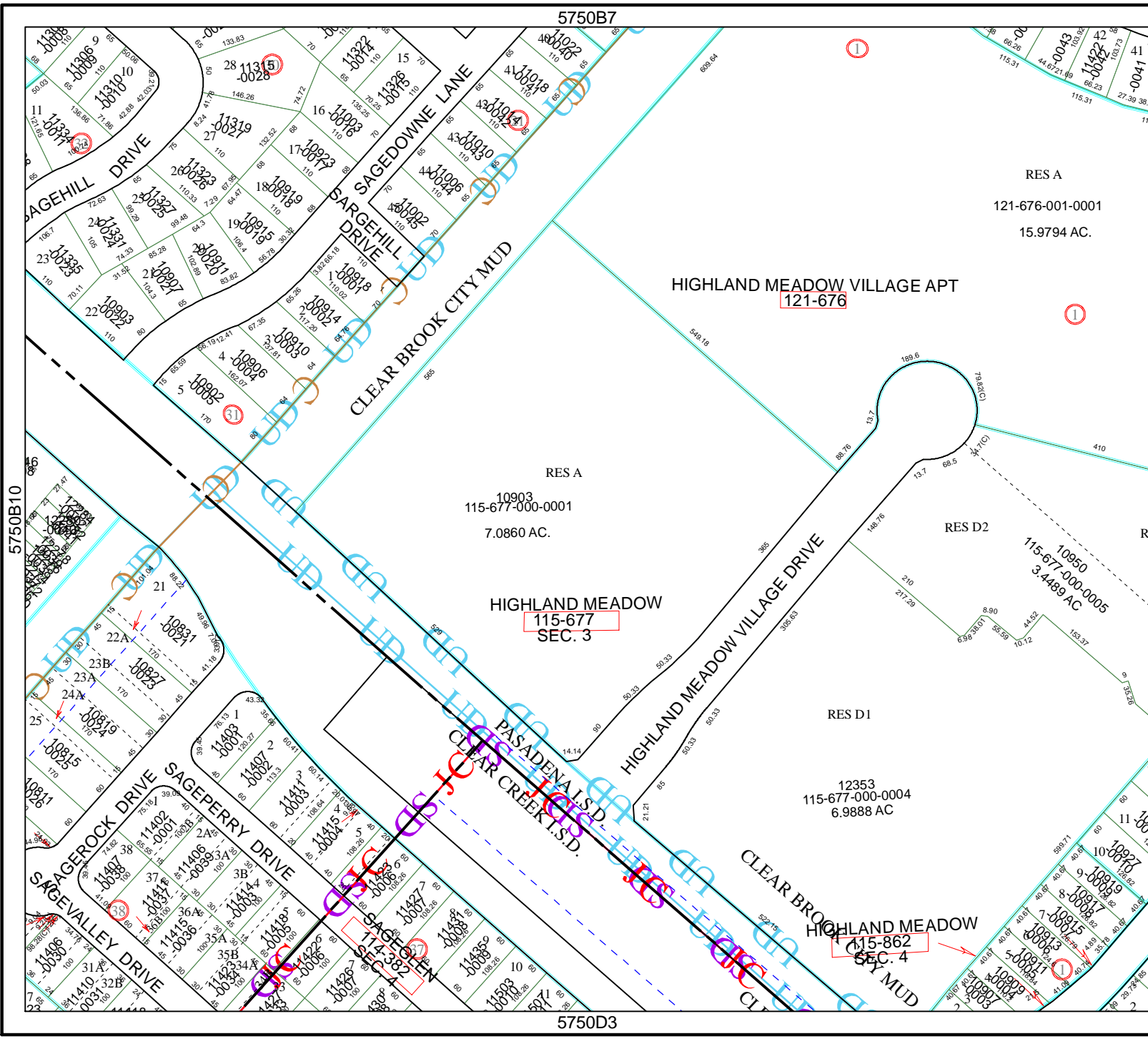


MAP LOCATION



FACET 5750B

1	2	3	4
5	6	7	8
9	10	11	12



RES A
 121-676-001-0001
 15.9794 AC.

HIGHLAND MEADOW VILLAGE APT
 121-676

RES A
 10903
 115-677-000-0001
 7.0860 AC.

HIGHLAND MEADOW
 115-677
 SEC. 3

RES D2
 10950
 115-677-000-0005
 3.4489 AC

RES D1
 12353
 115-677-000-0004
 6.9888 AC

HIGHLAND MEADOW
 115-862
 SEC. 4

5750D3