

5750D10

10030
129-359-001-0001
6.7530 AC

COKEBURY UNITED METHODIST CHURCH
129-359

KRISTINA COURT

CAROLINE SHORE WAY

KATHERINE COURT

MEADOWS OF CLEAR CREEK
120-152
SEC 1

PARK MEADOW DRIVE

MEADOW HAWK DRIVE

ASHLEY LANE

BLACKHAWK BLVD

MEADOWS OF CLEAR CREEK
120-152
SEC 1

5749B6

Harris County Appraisal District



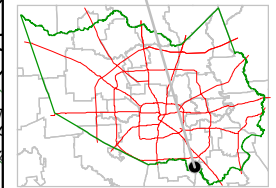
0 100 200

PUBLICATION DATE:
8/15/2011

Geospatial or map data maintained by the Harris County Appraisal District is for informational purposes and may not have been prepared for or be suitable for legal, engineering, or surveying purposes. It does not represent an on-the-ground survey and only represents the approximate location of property boundaries.

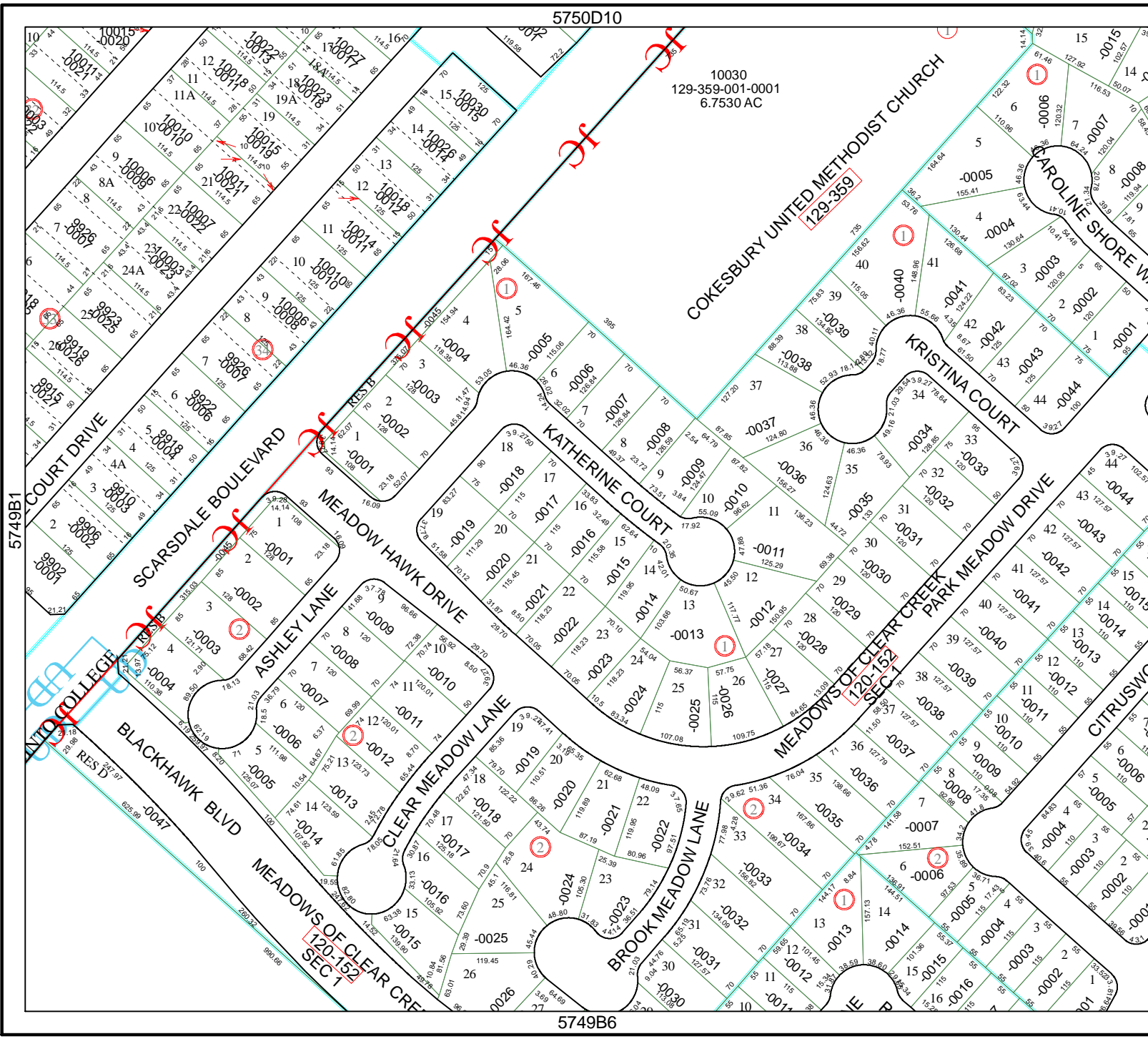


MAP LOCATION



FACET 5749B

1	2	3	4
5	6	7	8
9	10	11	12



5749B1

5749B3